

PRODUCT NO.	DSHP04TSGER
RoHS compliant	

NOTES :1.Specification:

- 1>.Operating force:1000gf Max
- 2>.Operating Temperature: -40° to+85°
- 3>.Storage Temperature: -40° to+85°
- 4>.Electricalife Life:1000cycles 25mA 24VDC
- 5>.Mechanical Life:3000cycles Operations

2. PLATING:
GOLD FLASH 1u"(min.) SOLDERTAIL,
3u" GOLD PLATING ON THE CONTACT AREA,
WITH 50u" NICKEL UNDERPLATINGOVERALL.
3. PART NUMBER DESCRIPTION :

DSHP XX I S G E R

[包装方式: T=管装 R=Reel]

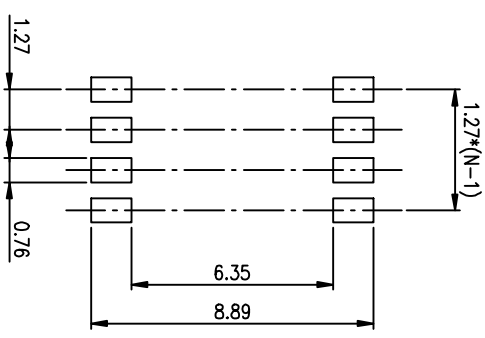
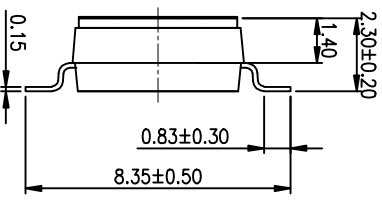
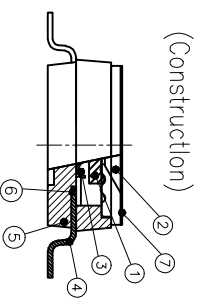
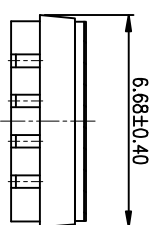
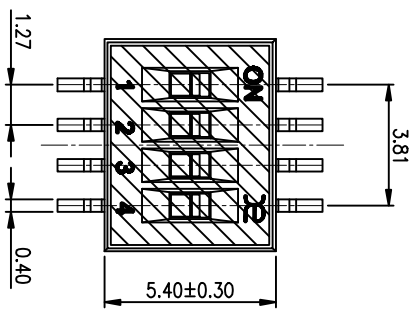
[电键层: B=接触部3u"焊脚部1.2u" G=接触部3u"焊脚部3u" F=接触部10u"焊脚部10u"]

[G=键全金 S=内键金(接触部)外镀锡(焊脚部)]

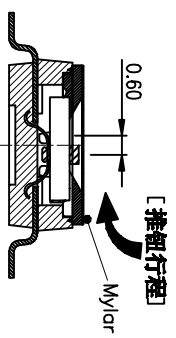
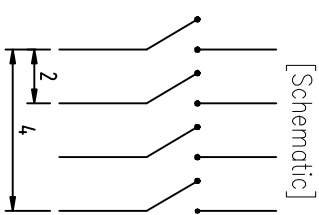
[脚型: S脚 / J脚 / 埋脚 / A脚 / 2脚]

[T=低推贴胶 S=低推不贴胶 L=长推]

[产品P数: 02=2P 04=4P 06=6P 08=8P 10=10P 12=12P]



RECOMMENDED P.C.B. LAYOUT (TOP VIEW)



Number	Part Name	Material	Finished
①	Actuator	UL94 V0	White
②	Cover	UL94 V0	Black
③	Movable	Beryllium Copper	3u" Gold
④	Terminal	Brass	1u" Gold
⑤	Base	UL94 V0	Black
⑥	Terminal Contact	Brass	3u" Gold
⑦		Mylar	0.05mm

TOLERANCE UNLESS OTHERWISE SPECIFIED		INSPECTION COPY	
LINER	ANGLES	PROJECTION	
0 ± 0.25	0 ± 2'		
.00 ± 0.15	.0 ± 1'		
.000 ± 0.10	.00 ± 0.5'		
DESIGN	kathy	03/20/12	
DRAWING			
CHECK			
APPRO.			

东莞市广智实业有限公司
Dongguan Kingtek Industrial Co., Ltd.

TITLE
BY DSHP SERIES PITCH 1.27mm

PRODUCT FAMILY DSHP SERIES
PRAT NO. DSHP04TSGER

FILE NO. DSHP04TSGER-A
SIZE UNIT SCALE SHEET REV.
A4 mm Z: 1 TOF: 1 A

REV.	ECN NO.	DR	DATE

X-ON Electronics

Largest Supplier of Electrical and Electronic Components

Click to view similar products for [Other Tools](#) category:

Click to view products by [Kingtek Industrial](#) manufacturer:

Other Similar products are found below :

[899-2-KT46](#) [CR-0AFL4--332K](#) [568681-1](#) [CR-12FP4--260R](#) [5800-0090](#) [58061-1](#) [59085](#) [00-8273-RDPP](#) [593033](#) [593072](#) [593564100](#) [593575](#)
[593593](#) [011349-000](#) [CRCW08052740FRT1](#) [LUC-012S070DSM](#) [LUC-018S070DSP](#) [LUC-024S105DSP](#) [599-2021-3-NME](#) [599-JJ-2021-03](#)
[CRCW2010331JR02](#) [601-JJ-06](#) [601-SPB](#) [601YSY](#) [602-JJ-03](#) [602SPB](#) [603-JJ-07-FP](#) [603-JJY-04](#) [CRTN1013](#) [CS16](#) [6-1579014-0](#) [6203](#)
[6240-1](#) [M-5Z](#) [M6816](#) [660-29ABT1](#) [662508-1](#) [CVHD-950X-93.333](#) [CW104-01X](#) [671-GP-04-KT39-73207](#) [CW307-01A](#) [CW30901A](#)
[CW6211201A](#) [679793-1](#) [690124-7](#) [690191-1](#) [690191-3](#) [690317-2](#) [691409-4](#) [692006-2](#)