

PRODUCT NO.	DSHP06TSGE1
RoHS compliant	

NOTES :1.Specification:

- 1>.Operating force:1000gf Max
- 2>.Operating Temperature: -40° to+85°
- 3>.Storage Temperature: -40° to+85°
- 4>.Electricalife Life:1000cycles 25mA 24VDC
- 5>.Mechanical Life:3000cycles Operations

2. PLATING:  
GOLD FLASH 1u"(min.) SOLDERTAIL,  
3u" GOLD PLATING ON THE CONTACT AREA,  
WITH 50u" NICKEL UNDERPLATINGOVERALL.
3. PART NUMBER DESCRIPTION :

DSHP XX I S G E I

[包装方式: T=管装 R=Reel]

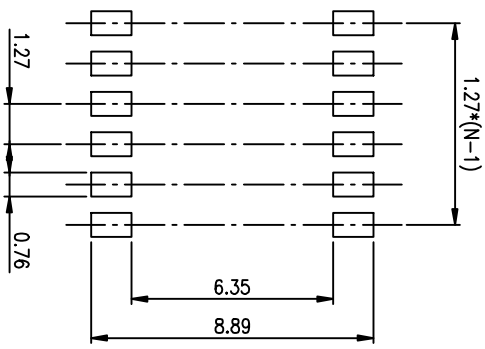
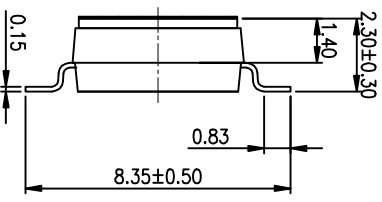
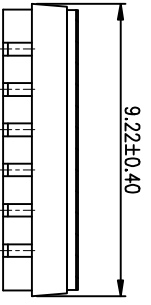
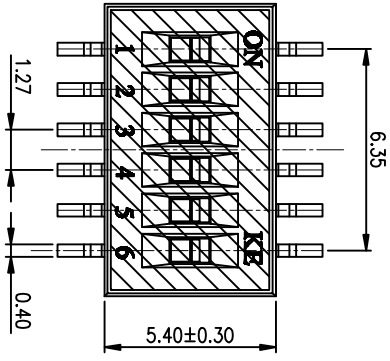
[电键层: B=镀镍3u"焊脚部1.2u" G=镀镍3u"焊脚部3u" F=镀镍10u"焊脚部10u"]

[G=镀全金 S=内镀金(接触部)外镀锡(焊脚部)]

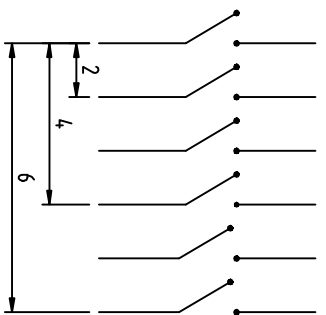
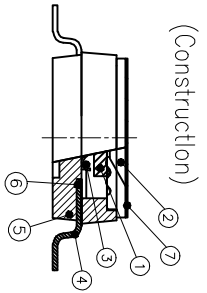
[脚型: S脚 / J脚 / 埋脚 / A脚 / 2脚]

[T=低推贴胶 S=低推不贴胶 L=长推]

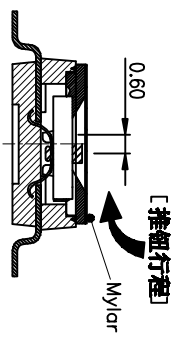
[产品P数: 02=2P 04=4P 06=6P 08=8P 10=10P 12=12P]



RECOMMENDED P.C.B. LAYOUT (TOP VIEW)



[Schematic]



1	Actuator	UL94 V0	White
2	Cover	UL94 V0	Black
3	Movable	Beryllium Copper	3u" Gold
4	Terminal	Brass	1u" Gold
5	Base	UL94 V0	Black
6	Terminal Contact	Brass	3u" Gold
7	Mylar	UL94 V0	0.05mm

Number	Part Name	Material	Finished
1	Actuator	UL94 V0	White
2	Cover	UL94 V0	Black
3	Movable	Beryllium Copper	3u" Gold
4	Terminal	Brass	1u" Gold
5	Base	UL94 V0	Black
6	Terminal Contact	Brass	3u" Gold
7	Mylar	UL94 V0	0.05mm

TOLERANCE UNLESS OTHERWISE SPECIFIED		INSPECTION COPY	
LINER	ANGLES	PROJECTION	
0 ± 0.25	0 ± 2'	BY DSHP SERIES PITCH 1.27mm	
.00 ± 0.15	.0 ± 1'	PRODUCT FAMILY DSHP SERIES	
.000± 0.10	.00± 0.5'	PRAT NO. DSHP06TSGE1	
DESIGN kathy		03/20/12	
DRAWING		FILE NO. DSHP06TSGE1-A	
CHECK		SIZE UNIT SCALE SHEET REV.	
APPRO.		A4 mm Z : 1 10F:1 A	

**东莞市广智实业有限公司**  
Dongguan Kingtek Industrial Co., Ltd.

## X-ON Electronics

Largest Supplier of Electrical and Electronic Components

*Click to view similar products for [DIP Switches/SIP Switches](#) category:*

*Click to view products by [Kingtek Industrial](#) manufacturer:*

Other Similar products are found below :

[79B10T](#) [8136-475G4T](#) [G7G-1A2-CB-DC12](#) [H7CZL8AC100240](#) [DRR60016](#) [DRS4016](#) [1825008-1](#) [1825444-1](#) [200183](#) [206002](#) [219-6LPSTRF](#) [25.350.0653.0](#) [SBS 5004 TG](#) [SDA10H1BDA](#) [97R06ST](#) [A2C-2A5](#) [1825444-7](#) [ADE08SA04](#) [ADE12S04](#) [192960010](#) [206005RAS](#) [206007](#) [2-1825058-8](#) [25.330.0653.1](#) [25.352.0353.0](#) [CXDRIVEV2X](#) [IKN0600000](#) [IKN0800000](#) [LA2-002-DC24](#) [DRD10CRAE04](#) [DSR02T](#) [DSS 208 N](#) [E2FMX2D1M1TGJ03M](#) [NDI10H](#) [219-9MSTP](#) [EPM02FV](#) [206010RAST](#) [NDS08V](#) [76SB05](#) [TD06H0SK1](#) [Z7.255.9027.0](#) [1-1825058-3](#) [1825428-4](#) [219-10LPSTF](#) [E3ZG6111D03M](#) [G4D212PUSTV2DC5](#) [EPG301BT06](#) [219-7LPSTRF](#) [1-1825058-6](#) [E3TSL23M5J03M](#)