

PRODUCT NO.	RoHS compliant
DSIC03LSGER	

REV.	ECN NO.	DR	DATE

NOTES :

1. Specification:

- 1>.Operating force:1000gf Max
- 2>.Operating Temperature: -40° to+85°
- 3>.Storage Temperature: -40° to+85°
- 4>.Mechanical Life: 3000cycles minimum
- 5>.Electrical Life: 2000cycles minimum

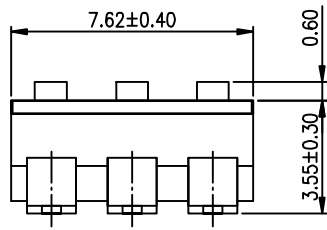
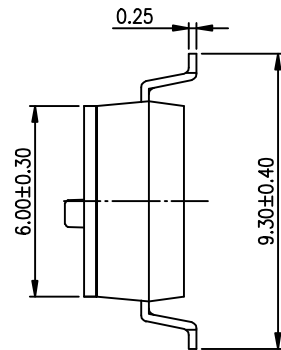
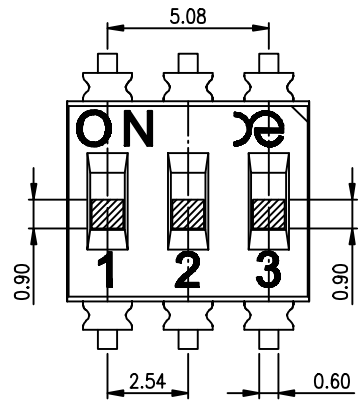
2. PLATING:

GOLD FLASH 1u"~2u" SOLDER TAIL,
1u"~3u" GOLD PLATING ON THE CONTACT AREA,
WITH 50u" NICKEL UNDERPLATING OVERALL.

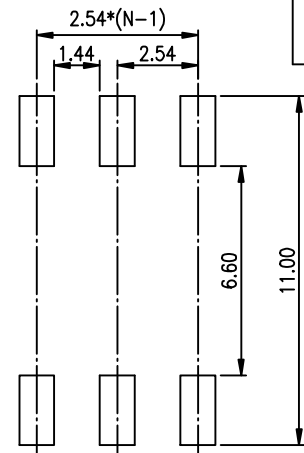
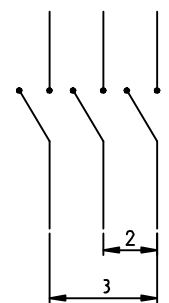
3. PART NUMBER DESCRIPTION

DSIC XX L S G E R

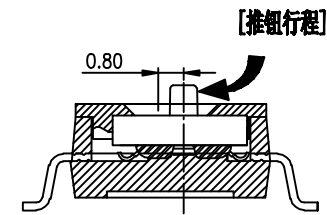
- [包装方式: T=管装 R=Reel]
- [电镀层: E=接触部 1u"~3u" / 焊尾部 1u"~2u"]
- [G=鍍金 S=内金外镍]
- [脚型: S脚 / J脚 / H脚 / A脚 / Z脚]
- [T=低推贴胶 S=低推不贴胶 L=长推]
- [产品数: 02=2P 08=8P 10=10P 12=12P]



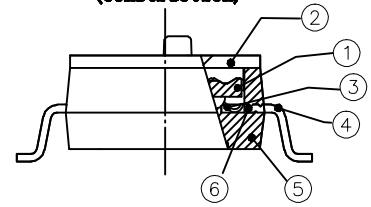
[Schematic]



RECOMMENDED P. C. B. LAYOUT (TOP VIEW)



(Construction)



Number	Part Name	Material	Finished	TOLERANCE UNLESS OTHERWISE SPECIFIED	
				LINER	ANGLES
①	Actuator	UL94 V0	White	.0 ± 0.25	0. ± 2'
②	Cover	UL94 V0	Black	.00 ± 0.15	.0 ± 1'
③	Movable	Copper Alloy	1u"~3u"Gold	.000± 0.10	.00± 0.5'
④	Terminal	Brass	1u"~2u"Gold		
⑤	Base	UL94 V0	Black		
⑥	Terminal Contact	Brass	1u"~3u"Gold		

DESIGN	kathy	2012/04/12
DRAWING		
CHECK		
APPRO.		

INSPECTION	COPY
PROJECTION	

KE 东莞市广普实业有限公司
DongGuan Kingtek Industrial Co., Ltd.

TITLE: BY DSIC SERIES PITCH 2.54mm

PRODUCT FAMILY DSIC SERIES

PRAT NO. DSIC03LSGER

FILE NO. DSIC03LSGER-A

SIZE	UNIT	SCALE	SHEET	REV.
A4	mm	2 : 1	1 OF 1	A

X-ON Electronics

Largest Supplier of Electrical and Electronic Components

Click to view similar products for [Other Tools](#) category:

Click to view products by [Kingtek Industrial](#) manufacturer:

Other Similar products are found below :

[899-2-KT46](#) [CR-0AFL4--332K](#) [568681-1](#) [5800-0090](#) [58061-1](#) [59085](#) [00-8273-RDPP](#) [593033](#) [593072](#) [593564100](#) [593575](#) [593593](#) [010-0003-0000](#) [011349-000](#) [CRCW08052740FRT1](#) [LUC-012S070DSM](#) [LUC-018S070DSP](#) [LUC-024S105DSP](#) [599-2021-3-NME](#) [599-JJ-2021-03](#) [CRCW2010331JR02](#) [601-JJ-06](#) [601-SPB](#) [601YSY](#) [602-JJ-03](#) [602SPB](#) [603-JJ-07-FP](#) [603-JJY-04](#) [CRTN1013](#) [CS16](#) [6-1579014-0](#) [62036240-1](#) [M43435 TY 1 SZ 3 FIN B BLK](#) [M43435 TY 2 SZ 3 FIN C BLK](#) [M43435 TY 5 SZ 3 FIN C NAT](#) [M-5Z](#) [M6816](#) [660-29ABT1](#) [662508-1](#) [CVHD-950X-93.333](#) [CW104-01X](#) [671-GP-04-KT39-73207](#) [CW307-01A](#) [CW30901A](#) [CW6211201A](#) [679793-1](#) [690191-1](#) [690191-3](#) [690317-2](#)