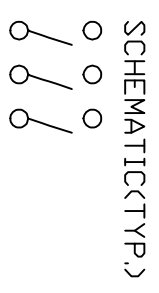
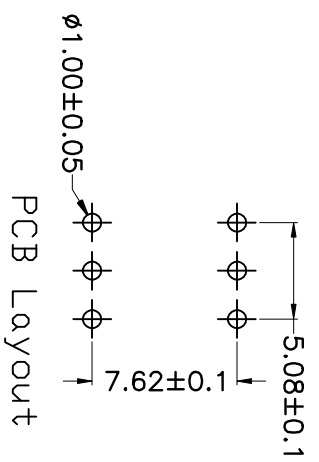
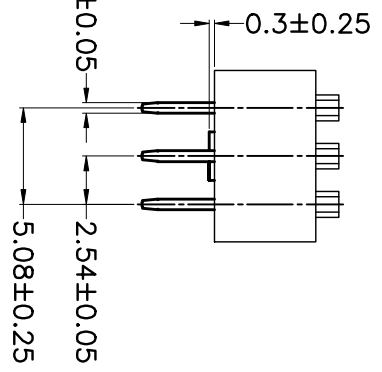
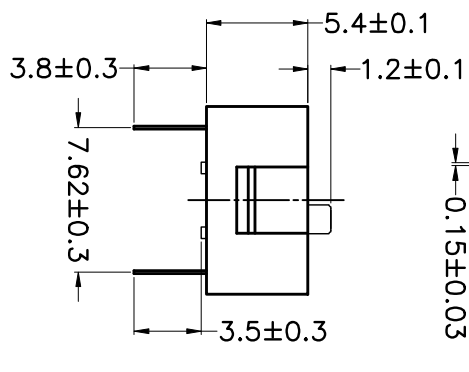
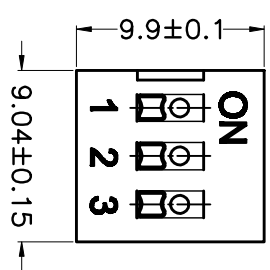
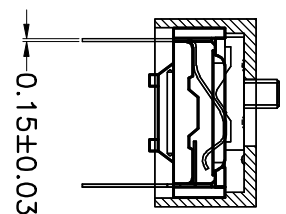


PRODUCT NO.	DSWB03LHGETB
Rohs compliant	



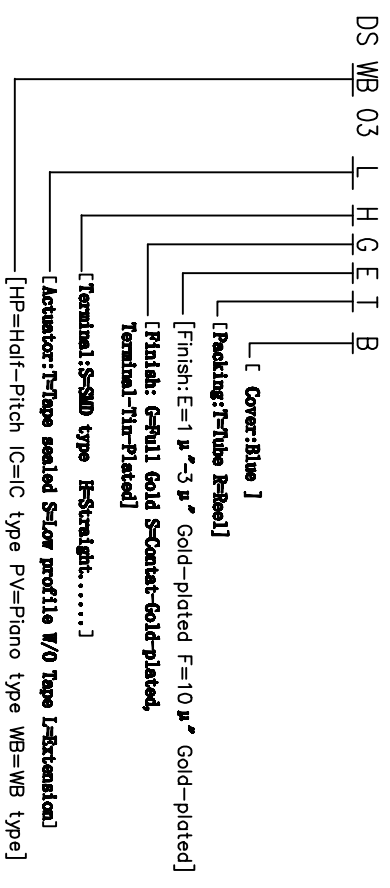
- Note:**
- All dimensions are in millimeters.
 - General tolerance: $\pm 0.2\text{mm}$.
 - Material:

- Base: UL94V-0 PBT Thermoplastic (Black).
- Cover: UL94V-0 PBT Thermoplastic (Black/Red/Blue).
- Actuators: UL94V-0 PBT Thermoplastic (White).
- Contact plating: Gold plating over nickel.
- Pitting material: Epoxy.

- Electrical
- Electrical: 2000 Operations per switch 24VDC, 25mA.
- Non-Switching Rating: 100mA, 50VDC.
- Switching Rating: 25mA, 24VDC.
- Contact Resistance: 100 mΩ Max. at initial.

- Mechanical
- Mechanical life: 2000 Operations per switch.
- Stroke: 2.0mm.
- Operation Temp: -20°C to 70°C.
- Storage Temp: -40°C to 85°C.

6. PART NUMBER DESCRIPTION:



- 注意:**
- 波峰焊: 推荐焊锡温度在270°C $\pm 5^\circ\text{C}$, 浸锡时间为6~8秒。
 - 手工焊: 使用30瓦烙铁控制温度在320°C, 焊接时间大约2~3秒。
 - 拔柄位置: 产品焊接时, 请将产品的拔柄置于QRF端, 能给予产品更好的接触性能。
 - 清洗过程: 清洗使用超声波方式, 能给予更好的效果。

TOLERANCE UNLESS OTHERWISE SPECIFIED		INSPECTION COPY		COPY		PROJECTION		东港市广普实业有限公司 DongGuan Kingtek Industrial Co., Ltd	
LINER	ANGLES	0 \pm 0.30	0 \pm 1°	0 \pm 0.30	0 \pm 1°	0 \pm 0.20	0 \pm 0.5°	FILE NO.	DSWB03LHGETB-A
0.00 \pm 0.10	.00 \pm	DRAWING		LU ER XIN		2013/07/02		SIZE	A4
BY DSWB SERIES PITCH 2.54mm		PRODUCT FAMILY DSWB SERIES		PRAT NO.		DSWB03LHGETB		UNIT	mm
CHECK		APPRO.		REV.		A		SCALE	1:1
DRAWING		APPRO.		REV.		A		SHEET	1 OF 1

X-ON Electronics

Largest Supplier of Electrical and Electronic Components

Click to view similar products for [DIP Switches/SIP Switches](#) category:

Click to view products by [Kingtek Industrial](#) manufacturer:

Other Similar products are found below :

[79B10T](#) [8136-475G4T](#) [G7G-1A2-CB-DC12](#) [DRS4016](#) [1825444-1](#) [193005MS](#) [195010MS](#) [200183](#) [206002](#) [208004](#) [208007ST](#) [208008](#)
[25.350.0653.0](#) [SDA10H1BDA](#) [97R06ST](#) [A2C-2A5](#) [1825444-7](#) [ADE12S04](#) [206005RAS](#) [206007](#) [209005LPST](#) [2-1825058-8](#) [219002LPST](#)
[219002MSTJRF](#) [219012MST](#) [25.352.0353.0](#) [CXDRIVEV2X](#) [LA2-002-DC24](#) [DSR02T](#) [193004MS](#) [E2FMX2D1M1TGJ03M](#) [NDI10H](#) [219-](#)
[9MSTP](#) [219008LPSTR](#) [EPM02FV](#) [206010RAST](#) [76SB05](#) [TD06H0SK1](#) [Z7.255.9027.0](#) [1-1825058-3](#) [1825428-4](#) [219-10LPSTF](#)
[E3ZG6111D03M](#) [G4D212PUSTV2DC5](#) [HARW0002](#) [EPG301BT06](#) [1-1825058-6](#) [E3TSL23M5J03M](#) [Y5795](#) [7R0060](#)