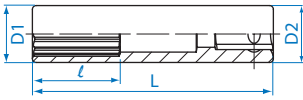


## Deep Socket

2230M

1/4"

- DIN 3124, ISO 2725-1



| KT NO.  | mm  | D1 mm | D2 mm | l mm | L mm | ⚖️ | 📦        |
|---------|-----|-------|-------|------|------|----|----------|
| 223004M | 4   | 6.8   | 11.8  | 6    | 50   | 20 | 20 / 320 |
| 223045M | 4.5 | 7.4   | 11.8  | 7    | 50   | 20 | 20 / 320 |
| 223005M | 5   | 8.0   | 11.8  | 7    | 50   | 20 | 20 / 320 |
| 223055M | 5.5 | 8.7   | 11.8  | 9    | 50   | 20 | 20 / 320 |
| 223006M | 6   | 9.2   | 11.8  | 9    | 50   | 21 | 20 / 320 |
| 223007M | 7   | 10.3  | 11.8  | 15   | 50   | 22 | 20 / 320 |
| 223008M | 8   | 11.8  | 11.8  | 15   | 50   | 25 | 20 / 320 |
| 223009M | 9   | 13.0  | 13.0  | 15   | 50   | 28 | 15 / 240 |
| 223010M | 10  | 14.5  | 14.5  | 15   | 50   | 36 | 15 / 240 |
| 223011M | 11  | 15.8  | 15.8  | 21   | 50   | 41 | 15 / 240 |
| 223012M | 12  | 16.8  | 16.8  | 21   | 50   | 47 | 15 / 240 |
| 223013M | 13  | 17.8  | 17.8  | 21   | 50   | 49 | 15 / 240 |
| 223014M | 14  | 19.8  | 19.8  | 21   | 50   | 66 | 15 / 240 |

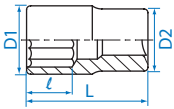
## Double Square Socket

2310M

2310S

1/4"

- Metric-DIN 3120
- Inch-ANSI / ASME B107.1



| KT NO.  | mm | D1 mm | D2 mm | l mm | L mm | ⚖️ | 📦        |
|---------|----|-------|-------|------|------|----|----------|
| 231008M | 8  | 13.8  | 13.0  | 9    | 24   | 16 | 12 / 360 |
| 231010M | 10 | 16.8  | 15.4  | 9    | 24   | 22 | 12 / 360 |

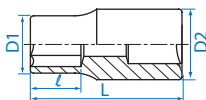
| KT NO.  | inch | D1 mm | D2 mm | l mm | L mm | ⚖️ | 📦        |
|---------|------|-------|-------|------|------|----|----------|
| 231010S | 5/16 | 13.8  | 13.0  | 9    | 24   | 15 | 12 / 360 |
| 231012S | 3/8  | 16.8  | 15.4  | 9    | 24   | 24 | 12 / 360 |

## Star Socket

2375M

1/4"

- DIN 3120



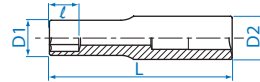
| KT NO.  | Size | D1 mm | D2 mm | l mm | L mm | ⚖️ | 📦        |
|---------|------|-------|-------|------|------|----|----------|
| 237504M | E4   | 6.0   | 11.8  | 3.6  | 24   | 9  | 20 / 600 |
| 237505M | E5   | 7.0   | 11.8  | 4.0  | 24   | 10 | 20 / 600 |
| 237506M | E6   | 8.0   | 11.8  | 6.0  | 24   | 10 | 20 / 600 |
| 237507M | E7   | 8.5   | 11.8  | 7.0  | 24   | 11 | 20 / 600 |
| 237508M | E8   | 9.8   | 11.8  | 8.0  | 24   | 11 | 20 / 600 |
| 237510M | E10  | 11.8  | 11.8  | 9.0  | 24   | 13 | 20 / 600 |

## Star Socket

2275M

1/4"

- DIN 3120



| KT NO.  | Size | D1 mm | D2 mm | l mm | L mm | ⚖️ | 📦        |
|---------|------|-------|-------|------|------|----|----------|
| 227504M | E4   | 6.0   | 11.8  | 3.6  | 50   | 21 | 20 / 320 |
| 227505M | E5   | 7.0   | 11.8  | 4.0  | 50   | 22 | 20 / 320 |
| 227506M | E6   | 8.0   | 11.8  | 6.0  | 50   | 24 | 20 / 320 |
| 227507M | E7   | 8.5   | 11.8  | 7.0  | 50   | 24 | 20 / 320 |
| 227508M | E8   | 9.8   | 11.8  | 8.0  | 50   | 26 | 20 / 320 |

## Bit Socket

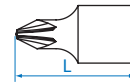


In order to get normal life of bit socket, always use within limited torque to bit.

2011X

1/4"

- Phillips head
- DIN ISO 8764-1

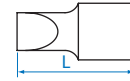


| KT NO.  | No. | L mm | ⚖️ | 📦        |
|---------|-----|------|----|----------|
| 201101X | PH1 | 25   | 9  | 20 / 600 |
| 201102X | PH2 | 25   | 9  | 20 / 600 |
| 201103X | PH3 | 25   | 10 | 20 / 600 |
| 201104X | PH4 | 25   | 12 | 20 / 600 |

2012X

1/4"

- Slotted head
- DIN ISO 2380-1

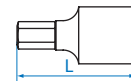


| KT NO.  | Tip width mm | Tip thickness mm | L mm | ⚖️ | 📦        |
|---------|--------------|------------------|------|----|----------|
| 201235X | 3.5          | 0.6              | 25   | 8  | 20 / 600 |
| 201255X | 5.5          | 1.0              | 25   | 9  | 20 / 600 |
| 201208X | 8            | 1.2              | 25   | 10 | 20 / 600 |

2015X

1/4"

- Hexagon head
- DIN ISO 2380-1



| KT NO.   | mm   | L mm | ⚖️ | 📦        |
|----------|------|------|----|----------|
| 201503MX | H3   | 25   | 8  | 20 / 600 |
| 201504MX | H4   | 25   | 9  | 20 / 600 |
| 201505MX | H5   | 25   | 10 | 20 / 600 |
| 201506MX | H6   | 25   | 10 | 20 / 600 |
| 201508MX | H8   | 25   | 13 | 20 / 600 |
| 201510MX | H10  | 25   | 15 | 20 / 600 |
| 201504SX | 1/8  | 25   | 8  | 20 / 600 |
| 201506SX | 3/16 | 25   | 9  | 20 / 600 |
| 201507SX | 7/32 | 25   | 10 | 20 / 600 |
| 201508SX | 1/4  | 25   | 10 | 20 / 600 |
| 201510SX | 5/16 | 25   | 13 | 20 / 600 |
| 201512SX | 3/8  | 25   | 14 | 20 / 600 |

## X-ON Electronics

Largest Supplier of Electrical and Electronic Components

*Click to view similar products for [Screwdrivers, Nut Drivers & Socket Drivers](#) category:*

*Click to view products by [KING TONY](#) manufacturer:*

Other Similar products are found below :

[1406504-2](#) [272012M](#) [271001M](#) [30246](#) [HMM-HH](#) [32024](#) [TL10416](#) [612020B](#) [35-045](#) [6951](#) [83](#) [9977](#) [EMF](#) [99833](#) [RB1](#) [S3166V](#) [X103V](#)  
[XTD10TP](#) [X108N](#) [HS7N](#) [HS618N](#) [LN25MMN](#) [HS18N](#) [XST1010N](#) [P4N](#) [R146N](#) [P12SN](#) [R5324N](#) [99764N](#) [P8N](#) [99312N](#) [R3163N](#)  
[SX101N](#) [LN22N](#) [XTD10N](#) [9955MMN](#) [995MMN](#) [996MMN](#) [LN25N](#) [THS9N](#) [R3166N](#) [R144N](#) [RB2N](#) [HS10N](#) [99964BPN](#) [HS11N](#) [HS12N](#)  
[THS8N](#) [TL12N](#) [LN23BPN](#)