

Insert Tool

345031

• Chrome plated

- Ratchet insert tool
- Square drive size : 9 x 12
- 5° gear action degree (72 teeth)
- Interchangeable head for interchangeable torque wrenches



- 3426A-1DK
- 3436A-1DK
- 3446A-1DK

series No. before 17086A

- 3426A-1DK01
- 3436A-1DK01
- 3446A-1DK01

series No. after 17086A

- 3426A-1DK02
- 3436A-1DK02
- 3446A-1DK02

series No. after 19106A

345032

• Chrome plated

- Ratchet insert tool
- Square drive size : 14 x 18
- 5° gear action degree (72 teeth)
- Interchangeable head for interchangeable torque wrenches



- 3436A-2DK
- 3446A-1DK

series No. before 17086A

- 3436A-2DK01
- 3446A-1DK01

series No. after 17086A

- 3436A-2DK02
- 3446A-1DK02

series No. after 19106A

- 3466A-1DK

series No. before 17086A

- 3466A-1DK01

series No. after 17086A

KT NO.	Size	Maximum Torque N-m	Lw* mm	L mm		
●●● 34503102R	1/4" DR.	62	17	46	68	12 / 192
●●● 34503103R	3/8" DR.	202	17.6	48.8	99	10 / 160
●●● 34503104R	1/2" DR.	512	25	60	216	6 / 96

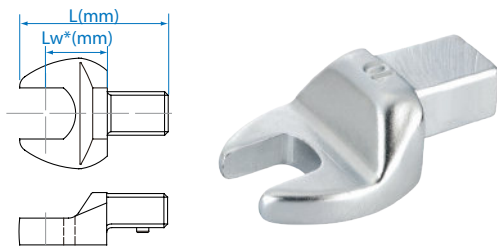
KT NO.	Size	Maximum Torque N-m	Lw* mm	L mm		
●●● 34503203R	3/8" DR.	202	25	70	239	6 / 96
●●● 34503204R	1/2" DR.	512	25	70	248	6 / 96
●●● 34503206R	3/4" DR.	800	25	71.5	353	4 / 64

345011

• Chrome plated

- Open end insert tool
- Square drive size : 9 x 12

KT NO.	Size mm	Maximum Torque N-m	Lw* mm	L mm		
34501107M	7	10	17.5	37.4	36	12 / 192
34501108M	8	13	17.5	37.9	38	12 / 192
34501109M	9	19	17.5	37.9	38	12 / 192
34501110M	10	25	17.5	38.2	41	12 / 192
34501111M	11	33	17.5	39.0	39	12 / 192
34501112M	12	42	17.5	39.0	41	12 / 192
34501113M	13	52	17.5	39.3	44	12 / 192
34501114M	14	64	20	43.1	54	12 / 192
34501115M	15	77	20	43.4	58	12 / 192
34501116M	16	93	20	43.9	57	12 / 192
34501117M	17	110	20	44.4	61	12 / 192
34501118M	18	130	20	45.3	62	12 / 192
34501119M	19	150	20	45.0	66	12 / 192
34501121M	21	198	25	52.4	118	10 / 160
34501122M	22	225	25	53.1	124	10 / 160
34501124M	24	287	25	54.1	128	8 / 128
34501127M	27	400	32.5	60.1	198	8 / 128
34501130M	30	537	32.5	60.9	195	10 / 80
34501132M	32	644	32.5	62.6	213	10 / 80
34501136M	36	762	32.5	64.8	213	10 / 80



KT NO.	Size inch	Maximum Torque N-m	Lw* mm	L mm		
34501108S	1/4	10	17.5	37.4	36	12 / 192
34501110S	5/16	13	17.5	37.9	38	12 / 192
34501112S	3/8	25	17.5	38.2	40	12 / 192
34501114S	7/16	33	17.5	39.0	41	12 / 192
34501116S	1/2	52	17.5	39.3	43	12 / 192
34501118S	9/16	64	20.0	43.1	53	12 / 192
34501120S	5/8	93	20.0	43.9	59	12 / 192
34501122S	11/16	110	20.0	44.4	63	12 / 192
34501124S	3/4	150	20.0	45.0	64	12 / 192

X-ON Electronics

Largest Supplier of Electrical and Electronic Components

Click to view similar products for [Spanners](#) category:

Click to view products by [KING TONY](#) manufacturer:

Other Similar products are found below :

[74008](#) [1406504-3](#) [1406504-4](#) [1406504-5](#) [1725859-2](#) [9965](#) [1055267-1](#) [1-1406504-0](#) [TG70-24](#) [TG70-18](#) [R282320031](#) [1055512-1](#) [1055276-1](#)
[R282303020](#) [TOL-222901](#) [523200-4](#) [TOL-171801](#) [1490262-2](#) [9968](#) [1302340394](#) [AC24VS](#) [R282340000](#) [BT-BS-609WT](#) [BT-BS-610R](#) [BT-](#)
[BS-610RT](#) [R282320030](#) [BT-ST-302D](#) [1031-27R](#) [1031-34R](#) [1060-29](#) [1067-10](#) [1067-27](#) [1067-32](#) [1071-48](#) [10F0-26P](#) [10F0-32P](#) [10F0-55P](#) [0-](#)
[90-947](#) [0-90-949](#) [40080606](#) [40082626](#) [40093232](#) [50184065](#) [58211008](#) [58211011](#) [58211013](#) [58211014](#) [58211015](#) [58211016](#) [58211019](#)