

# Thin Wall Impact Socket

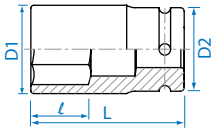
KT No. & D1



## 6835M

3/4"

- DIN 3121

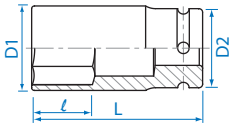


KT NO.	mm	D1 mm	D2 mm	ℓ mm	L mm	g	kg	1/24
683517M	17	28.0	44	16	60	346	6	48
683519M	19	30.0	44	16	60	351	6	48
683521M	21	33.0	44	18	60	369	6	48
683522M	22	34.0	44	18	60	372	6	48
683523M	23	35.0	44	23	60	373	6	48
683524M	24	36.5	44	23	60	382	6	48
683526M	26	39.0	44	25	80	397	1	24
683527M	27	40.0	44	26	80	424	1	24
683529M	29	43.0	44	26	80	455	1	24
683530M	30	44.0	44	26	80	555	1	24
683532M	32	46.5	44	26	80	512	1	24

## 6935M

3/4"

- DIN 3121

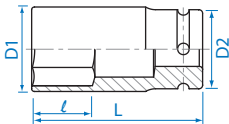


KT NO.	mm	D1 mm	D2 mm	ℓ mm	L mm	g	kg	1/24
693519M	19	30.0	44	16	90	513	1	24
693521M	21	33.0	44	18	90	546	1	24
693522M	22	34.0	44	18	90	541	1	24
693523M	23	35.0	44	23	90	519	1	24
693524M	24	36.5	44	23	90	573	1	24
693526M	26	39.0	44	25	90	578	1	24
693527M	27	40.0	44	27	90	574	1	24
693529M	29	43.0	44	27	90	578	1	24
693530M	30	44.0	44	27	90	622	1	24
693532M	32	46.5	44	30	90	683	1	24

## 6935S

3/4"

- ANSI / ASME B107.2



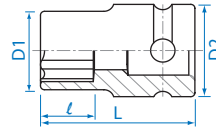
KT NO.	inch	D1 mm	D2 mm	ℓ mm	L mm	g	kg	1/24
693524S	3/4	30.0	38	16	90	370	1	24
693526S	13/16	33.0	38	18	90	380	1	24
693528S	7/8	34.0	38	18	90	385	1	24
693530S	15/16	36.5	38	23	90	415	1	24
693532S	1	38.0	38	23	90	500	1	24
693534S	1-1/16	40.0	44	25	90	654	1	24
693536S	1-1/8	43.0	44	25	90	680	1	24
693538S	1-3/16	44.0	44	27	90	684	1	24
693540S	1-1/4	46.5	44	30	90	733	1	24

# Impact Star Socket

## 6575M

3/4"

- For torx external screw
- DIN 3121



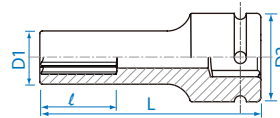
KT NO.	Size	D1 mm	D2 mm	ℓ mm	L mm	g	kg	1/24
657524M	E24	32.5	44.0	17.0	50	334	6	48
657526M	E26	35.0	44.0	19.0	60	402	6	48
657528M	E28	36.5	44.0	25.5	60	401	6	48
657530M	E30	37.5	44.0	27.0	65	428	1	24
657532M	E32	39.5	44.0	29.0	65	447	1	24

# Deep Impact Star Socket

## 6475M

3/4"

- For torx external screw
- DIN 3121
- For the operation of cylinder head bolts
- E18 application MAN M 2000 / Bus with D 08 engine
- E20 application MAN F 2000 / F 90 / F 8 / Bus with D 25 and D 28 engines
- E24 application MAN D20 engine



KT NO.	Size	D1 mm	D2 mm	ℓ mm	L mm	g	kg	1/24
647518M	E18	26.5	44.0	12.5	110	592	1	10
647520M	E20	29.0	44.0	14.0	110	627	1	10
647522M	E22	31.0	44.0	15.0	110	662	1	10
647524M	E24	32.5	44.0	17.0	110	693	1	10

# Rear Wheel Socket

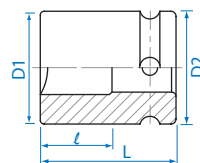
KT No. & D1



## 6514M

3/4"

- 4 points
- DIN 3121



KT NO.	Size	D1 mm	D2 mm	ℓ mm	L mm	g	kg	1/24
651417M	17	39.8	34	28	53	353	1	24
651419M	19	39.8	34	28	53	339	1	24
651420M	20	41.8	36	28	53	381	1	24
651421M	21	41.8	36	28	53	369	1	24

## X-ON Electronics

Largest Supplier of Electrical and Electronic Components

*Click to view similar products for [Screwdrivers, Nut Drivers & Socket Drivers](#) category:*

*Click to view products by [KING TONY](#) manufacturer:*

Other Similar products are found below :

[1406504-2](#) [272012M](#) [271001M](#) [30246](#) [HMM-HH](#) [32024](#) [TL10416](#) [612020B](#) [35-045](#) [6951](#) [83](#) [9977](#) [EMF](#) [99833](#) [RB1](#) [S3166V](#) [X103V](#)  
[XTD10TP](#) [X108N](#) [HS7N](#) [HS618N](#) [LN25MMN](#) [HS18N](#) [XST1010N](#) [P4N](#) [R146N](#) [P12SN](#) [R5324N](#) [99764N](#) [P8N](#) [99312N](#) [R3163N](#)  
[SX101N](#) [LN22N](#) [XTD10N](#) [9955MMN](#) [995MMN](#) [996MMN](#) [LN25N](#) [THS9N](#) [R3166N](#) [R144N](#) [RB2N](#) [HS10N](#) [99964BPN](#) [HS11N](#) [HS12N](#)  
[THS8N](#) [TL12N](#) [LN23BPN](#)