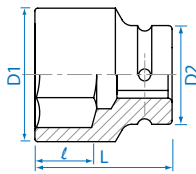


Standard Impact Socket

8535M

1"

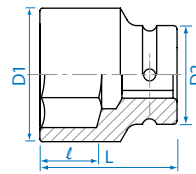
▪ DIN 3129, ISO 2725-2



8535S

1"

▪ ANSI / ASME B107.2



KT NO.	mm	D1 mm	D2 mm	ℓ mm	L mm	g	kg
853519M	19	35	54	15	58	508	1 / 24
853521M	21	37	54	15	58	537	1 / 24
853522M	22	38	54	15	58	548	1 / 24
853523M	23	39	54	17	58	544	1 / 24
853524M	24	41	54	17	58	562	1 / 24
853525M	25	42	54	17	58	562	1 / 24
853526M	26	43	54	19	58	564	1 / 24
853527M	27	44	54	19	58	565	1 / 24
853528M	28	45	54	19	58	570	1 / 24
853529M	29	47	54	19	58	591	1 / 24
853530M	30	48	54	20	60	592	1 / 24
853532M	32	51	54	20	62	647	1 / 24
853533M	33	52	54	20	62	662	1 / 24
853534M	34	53	54	20	62	665	1 / 24
853535M	35	54	54	20	62	665	1 / 24
853536M	36	56	54	20	65	721	1 / 24
853537M	37	56	54	22	65	698	1 / 24
853538M	38	58	54	22	65	733	1 / 24
853540M	40	60	54	22	65	758	1 / 24
853541M	41	61	54	22	70	824	1 / 24
853542M	42	64	54	22	70	905	1 / 20
853544M	44	67	54	26	70	978	1 / 20
853545M	45	67	54	26	70	960	1 / 20
853546M	46	68	54	26	75	1033	1 / 20
853548M	48	70	54	26	75	1061	1 / 20
853550M	50	73	54	26	75	1170	1 / 20
853552M	52	75	54	30	80	1244	1 / 12
853553M	53	76	54	30	80	1278	1 / 12
853554M	54	78	54	30	80	1351	1 / 12
853555M	55	79	54	32	83	1435	1 / 12
853558M	58	83	54	32	83	1514	1 / 12
853560M	60	86	54	32	87	1693	1 / 12
853563M	63	90	54	34	87	1750	1 / 12
853565M	65	92	54	34	90	1750	1 / 12
853566M	66	94	54	34	90	1889	1 / 12
853568M	68	95	54	34	90	1963	1 / 12
853570M	70	97	54	34	93	2036	1 / 8
853571M	71	99	86	36	93	2917	1 / 8
853575M	75	104	86	36	95	3120	1 / 8
853580M	80	110	86	43	95	3387	1 / 4
853585M	85	115	86	43	95	3532	1 / 4
853590M	90	122	86	43	100	4004	1 / 4
853595M	95	130	95	52	105	4924	1 / 2
8535A0M	100	136	95	51	105	4972	1 / 2

KT NO.	inch	D1 mm	D2 mm	ℓ mm	L mm	g	kg
853524S	3/4	35	54	15	58	528	1 / 24
853526S	13/16	37	54	15	58	548	1 / 24
853528S	7/8	38	54	15	58	538	1 / 24
853530S	15/16	41	54	17	58	568	1 / 24
853532S	1	42	54	17	58	559	1 / 24
853534S	1-1/16	44	54	19	58	566	1 / 24
853536S	1-1/8	47	54	19	58	586	1 / 24
853538S	1-3/16	48	54	20	60	600	1 / 24
853540S	1-1/4	51	54	20	62	659	1 / 24
853542S	1-5/16	52	54	20	62	660	1 / 24
853544S	1-3/8	54	54	20	62	660	1 / 24
853546S	1-7/16	56	54	20	65	713	1 / 24
853548S	1-1/2	58	54	22	65	728	1 / 24
853550S	1-9/16	60	54	22	65	758	1 / 24
853552S	1-5/8	61	54	22	70	822	1 / 24
853554S	1-11/16	64	54	22	70	886	1 / 20
853556S	1-3/4	67	54	26	70	968	1 / 20
853558S	1-13/16	68	54	26	75	1075	1 / 20
853560S	1-7/8	70	54	26	75	1057	1 / 20
853562S	1-15/16	72	54	26	75	1100	1 / 20
853564S	2	74	54	30	75	1170	1 / 20
853566S	2-1/16	75	54	30	80	1225	1 / 12
853568S	2-1/8	78	54	30	80	1355	1 / 12
853570S	2-3/16	79	54	32	83	1423	1 / 12
853572S	2-1/4	82	54	32	83	1486	1 / 12
853574S	2-5/16	83	54	32	83	1459	1 / 12
853576S	2-3/8	86	54	32	87	1681	1 / 12
853578S	2-7/16	88	54	34	87	1681	1 / 12
853580S	2-1/2	90	54	34	87	1704	1 / 12
853582S	2-9/16	92	54	34	90	1881	1 / 12
853584S	2-5/8	94	54	34	90	1795	1 / 12
853586S	2-11/16	95	54	34	90	1931	1 / 12
853588S	2-3/4	97	54	34	93	2114	1 / 8
853590S	2-13/16	99	86	36	93	2869	1 / 8
853592S	2-7/8	102	86	36	93	2997	1 / 8
853594S	2-15/16	104	86	36	95	3161	1 / 8
853596S	3	106	86	36	95	3279	1 / 8
8535A0S	3-1/8	110	86	43	95	3386	1 / 4
8535A4S	3-1/4	112	86	43	95	3342	1 / 4
8535A8S	3-3/8	117	86	43	100	3873	1 / 4
8535B2S	3-1/2	122	86	43	100	4148	1 / 4

X-ON Electronics

Largest Supplier of Electrical and Electronic Components

Click to view similar products for [Screwdrivers, Nut Drivers & Socket Drivers](#) category:

Click to view products by [KING TONY](#) manufacturer:

Other Similar products are found below :

[1406504-2](#) [272012M](#) [271001M](#) [30246](#) [HMM-HH](#) [32024](#) [TL10416](#) [612020B](#) [35-045](#) [6951](#) [83](#) [9977](#) [EMF](#) [99833](#) [RB1](#) [S3166V](#) [X103V](#)
[XTD10TP](#) [X108N](#) [HS7N](#) [HS618N](#) [LN25MMN](#) [HS18N](#) [XST1010N](#) [P4N](#) [R146N](#) [P12SN](#) [R5324N](#) [99764N](#) [P8N](#) [99312N](#) [R3163N](#)
[SX101N](#) [LN22N](#) [XTD10N](#) [9955MMN](#) [995MMN](#) [996MMN](#) [LN25N](#) [THS9N](#) [R3166N](#) [R144N](#) [RB2N](#) [HS10N](#) [99964BPN](#) [HS11N](#) [HS12N](#)
[THS8N](#) [TL12N](#) [LN23BPN](#)