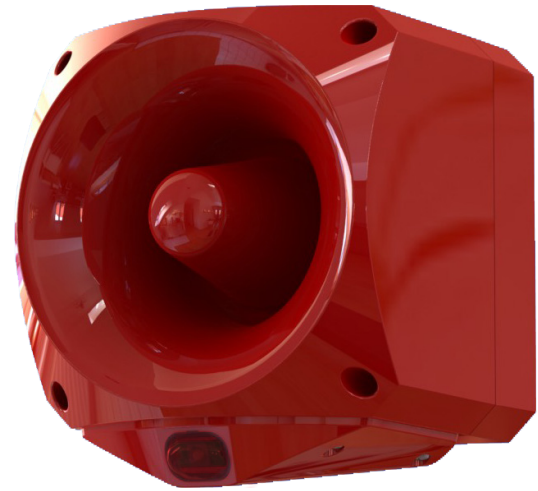
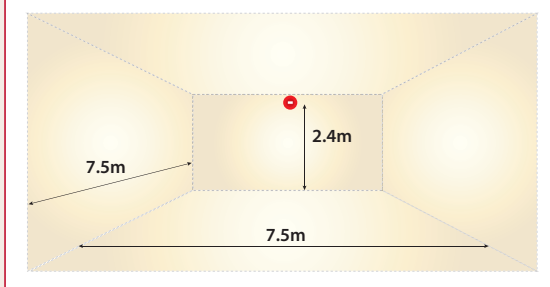


# Nexus Pulse 105/110 - Red Flash

## Nexus Pulse 105/110 Wall

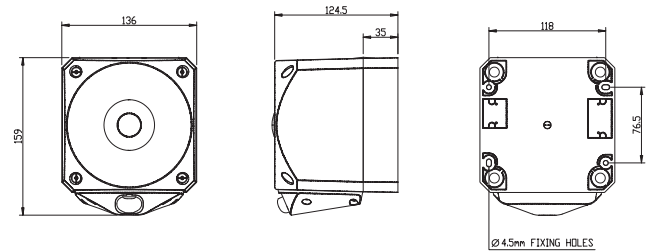
Nexus Pulse 105/110 are high output combined sounder beacons. With an EN54-23 approved coverage pattern of W-2.4-7.5, each Nexus Pulse wall mounted device can be mounted up to 2.4m high and can cover an 7.5m x 7.5m square room with a single device.

### EN54-23 Coverage: W-2.4-7.5

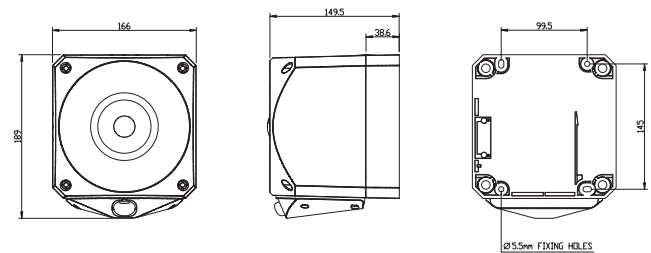


**Pulse Alert**  
TECHNOLOGY

Dimensions - Nexus Pulse 105



Dimensions - Nexus Pulse 110



Specifications	Nexus Pulse 105	Nexus Pulse 110
Voltage	17-60V DC	17-60V DC
Current @ 0.5Hz	50mA	65mA
Current @ 1Hz	70mA	85mA
Flash Colour	Red	Red
Body Colour	Red	Red
Ingress Protection	IP66	IP66
Operating Temp.	-25°C to +70°C	-25°C to +70°C
Sound Output	105dBA	110dBA

Feature	Benefit
Conforms to EN54-23	Exceeds the illumination requirements of EN54-23
Pulse Alert™ Technology	Patented electronic design maximises system efficiency by minimising power consumption
7.5m Coverage	Reduces the number of devices required; most rooms can be protected with a single device
Wire to Base Technology	Installation is quick and simple with mounting and wiring made only to the base, the head fixes on to the base during commissioning
Simple Upgrade	Nexus Pulse VADs share the same base mounting and wiring as previous versions, making the transition to 'Pulse' versions as simple as possible
Optimum Performance Level	Pulse Alert™ Technology enables the coverage pattern to be fixed at the optimum performance level
Synchronised Flash	Nexus Pulse VADs protect everyone including people prone to photosensitive epilepsy
No Surge Current	Eliminates power surges during system start up
Weatherproof to IP66	Surpasses the Ingress Protection requirements of EN54-23 making them suitable for a wide variety of environmental conditions

## X-ON Electronics

Largest Supplier of Electrical and Electronic Components

*Click to view similar products for [Industrial Panel Mount Indicators / Switch Indicators](#) category:*

*Click to view products by [KLAXON SIGNALS](#) manufacturer:*

Other Similar products are found below :

[LW1A-P1-GD](#) [LW1A-P1-W](#) [01-931.3](#) [01-152.025](#) [A0142N5](#) [APD106LN-G](#) [ATN2100](#) [HW1A-L1-GD](#) [HW1A-P2-GL](#) [HW1X-BM411-R](#)  
[HW2A-L1-GL](#) [HWAZ1N-OB](#) [PAMR25](#) [LSPD-120A](#) [LSPD-1Y](#) [LSPD-6A](#) [LSPD-6DA](#) [LSPD-6DW](#) [LSPD-6DY](#) [LSPD-6R](#) [LSPD-6W](#)  
[AL6H-LK3-A](#) [AL6M-LK1-MG](#) [AP8M155-G](#) [APN106L-O](#) [21-931.9](#) [CPSLED24](#) [AVLN3LD-R](#) [AYLW4L-G](#) [5000211OPAQUELENS](#)  
[5.49227.0071301](#) [HW2A-L1-GD](#) [HW2A-P1-GL](#) [LAY-1](#) [LB6P-1T04A](#) [LB6P-1T04G](#) [LSPD-1A](#) [LSPD-1W](#) [LSPD-6DG](#) [LSPD-6DR](#) [LSPD-](#)  
[6Y](#) [51-951.5](#) [10-2312.1062](#) [10-2312.1065](#) [10-2312.1069](#) [10-2313.1069](#) [10-4613.3102B](#) [10-4613.3104B](#) [10-5309.3202](#) [10-6412.3162](#)