

Sonos Beacon

Beacon with the TimeSaver base, connections are made to the base during the initial wiring phase which results in faster and more reliable installation. The beacon head 'twists and clicks' into the base on commissioning, avoiding the wiring and connection problems associated with traditional alarm devices.

Deep base units have weatherproof protection to IP65 and can be used in all locations both indoors and outdoors. The Sonos Beacon utilises a full faced, translucent case which provides a much larger lens area and a greater spread of light.

Sonos Beacon units have a deep or shallow red colour base as standard and are available with a red or amber lens.

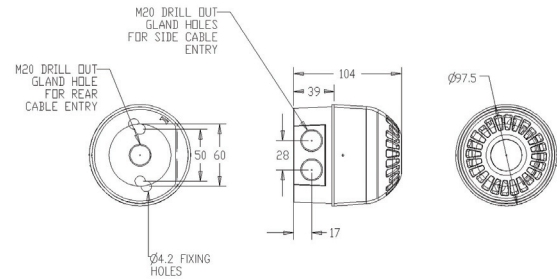
Features

- 2J Xenon beacon or high efficiency LED beacon
- Simple 'First Fix' installation (no second fix wiring)
- Weatherproof to IP65 (deep base units)
- Synchronised flash
- White base option

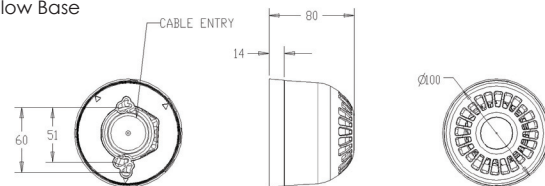
Lens Colour Options



Deep Base



Shallow Base



Specifications

Part No.	Base	Colours	Light Source	Voltage	Current
PSB-0009	Red shallow base	Red lens	LED	17-60V DC	5mA
PSB-0017	Red deep base	Red lens	LED	17-60V DC	5mA
PSB-0026	Red shallow base	Amber lens	LED	17-60V DC	5mA
PSB-0031	Red deep base	Amber lens	LED	17-60V DC	5mA
PSB-0042	White shallow base	Clear lens, Red LED	LED	17-60V DC	5mA
PSB-0045	White deep base	Clear lens, Red LED	LED	17-60V DC	5mA
PSB-0065	Red shallow base	Red lens	2J Xenon	10-60V DC	130 mA @ 24V DC
PSB-0062	Red deep base	Red lens	2J Xenon	10-60V DC	130 mA @ 24V DC
PSB-0090	Red shallow base	Amber lens	2J Xenon	10-60V DC	130 mA @ 24V DC
PSB-0064	Red deep base	Amber lens	2J Xenon	10-60V DC	130 mA @ 24V DC
PSB-0068	Red shallow base	Clear lens	2J Xenon	10-60V DC	130 mA @ 24V DC
PSB-0091	Red deep base	Clear lens	2J Xenon	10-60V DC	130 mA @ 24V DC
PSB-0107	Red shallow base	Blue Lens	2J Xenon	10-60V DC	130 mA @ 24V DC
PSB-0063	Red deep base	Blue Lens	2J Xenon	10-60V DC	130 mA @ 24V DC
PSB-0109	Red shallow base	Green Lens	2J Xenon	10-60V DC	130 mA @ 24V DC
PSB-0108	Red deep base	Green Lens	2J Xenon	10-60V DC	130 mA @ 24V DC

IP Rating: IP65 (deep base) IP21 (shallow base) **Operating Temp:** -25°C to +70°C (LED) -25°C to +55°C (Xenon) **Construction:** Flame retardant polycarbonate **Cable Entries:** 2 x 20mm cable glands (deep base) **Weight:** 0.22kg (shallow base) 0.25kg (deep base)

X-ON Electronics

Largest Supplier of Electrical and Electronic Components

Click to view similar products for [Piezo Buzzers & Audio Indicators](#) category:

Click to view products by [KLAXON SIGNALS](#) manufacturer:

Other Similar products are found below :

[68S1240-PA](#) [ESZ-26B](#) [FDG06PSLLF](#) [FDG111PLF](#) [F/DGX12P WITH LABEL LF](#) [F/NRMB 24 BLACK LF](#) [PF-35N29WQ](#) [PFD-21A29W](#)
[PFD-27A35PQ](#) [PL-21N30WQ](#) [PLD-21N30W](#) [PLD-21N30WQ](#) [PS-531Q](#) [PT-3534FP](#) [B822B](#) [B/CP28/100DB/BLACK LF](#) [S6109](#) [SC110E](#)
[SC2036ACP](#) [SC616N-2](#) [SC628FW](#) [SC628MPG](#) [SC648D](#) [SCS045MD9DT3S](#) [ESZ-25B-5-250B](#) [ESZ-25S](#) [F/BC 35-DR LF](#) [F/EB20P-DR LF](#)
[F/SU 21-02 LF](#) [F/TCW 12 WITH LABEL LF](#) [F/UCW 03 WITH LABEL LF](#) [F/UCW 06 WITH LABEL LF](#) [PFD-27N36W](#) [PKM35-4A0](#) [PL-](#)
[35N29WQ](#) [PLD-27A35PQ](#) [PS-552Q](#) [REF-202](#) [B/SE 128 RED LF](#) [KBS-20DA-7AS](#) [KBS-27DA-5C-105](#) [LSC628ANR](#) [PL-21N31PQ](#) [F-B-](#)
[P1405ISB LF](#) [F/DGX 05P WITH LABEL LF](#) [MSR516NP](#) [STA22702W](#) [STA20502](#) [SBM616J](#) [SBM616P](#)