

Fire Bell

The Fire Bell is a motorised bell designed for fire alarm applications. Its low current consumption and universally recognisable alarm sound makes it an ideal choice for many alarm systems.

Designed for ease of installation, it features a robust steel gong.

Units are finished in red and are available in two gong sizes: 6" and 8".

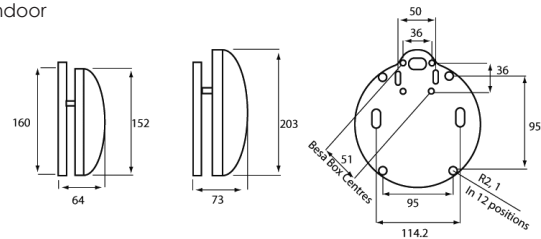
Depending on quantity, labels can be branded with a customer's name and logo.

Features

- Low current consumption
- Universally recognisable sound
- Diode polarised
- Choice of gong sizes (6" and 8")
- Approved to EN54-3



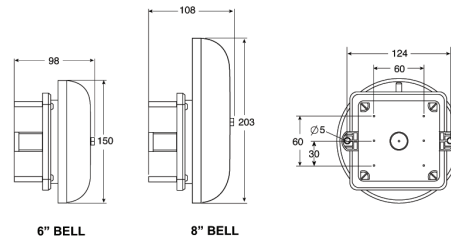
Indoor



Weatherproof

NOTE: MOUNTING HOLES ARE PROVIDED FOR BESA OR DIRECT WALL MOUNTING

NOTE: ALL MOUNTING HOLE DIMENSIONS FOR THE 8" BELL ARE THE SAME AS THE 6" BELL



6" BELL

8" BELL

Specifications

Part No.	Gong Size	Audibility at 1m	Voltage	Current
TAA-0007	6"	Up to 95dB (A)	19-28V DC	20mA
TAA-0015	8"	Up to 98dB (A)	19-28V DC	20mA
TAA-0017 Weatherproof	6"	Up to 95dB (A)	19-28V DC	20mA
TAA-0020 Weatherproof	8"	Up to 98dB (A)	19-28V DC	20mA

IP Rating: IP21C, IP33C (weatherproof version) **Rating:** Continuous **Frequency:** N/A **Operating Temp:** -10°C to +55°C
Dome Construction: Steel **Weight:** 0.92kg (6") & 1.27kg (8") **Compliance:** EN54-3 Type A, EN54-3 Type B (weatherproof version)

X-ON Electronics

Largest Supplier of Electrical and Electronic Components

Click to view similar products for [Piezo Buzzers & Audio Indicators](#) category:

Click to view products by [KLAXON SIGNALS](#) manufacturer:

Other Similar products are found below :

[6-4](#) [ESZ-26B](#) [FDG06PSLLF](#) [F/DGX12P WITH LABEL LF](#) [F/EM12PLF](#) [F/NRMB 24 BLACK LF](#) [PF-35N29WQ](#) [PFD-21A29W](#) [PFD-27A35PQ](#) [PL-21N30WQ](#) [PLD-21N30W](#) [PLD-21N30WQ](#) [PT-3534FP](#) [B822B](#) [8WD4420-0EA](#) [S6109](#) [SBM616PR](#) [SC110E](#) [SC2036ACP](#) [SC616N-2](#) [SC628FW](#) [SC628MPG](#) [SC648D](#) [SCS045MD9DT3S](#) [ESZ-25B-5-250B](#) [ESZ-25S](#) [F/TCW 05 WITH LABEL LF](#) [PFD-27N36W](#) [PKM35-4A0](#) [PL-35N29WQ](#) [PLD-27A35PQ](#) [PS-552Q](#) [KBS-20DA-7AS](#) [KBS-27DA-5C-105](#) [LSC628ANR](#) [SC110FK](#) [PL-21N31PQ](#) [F-B-P1405ISB LF](#) [F/HCW 06 WITH LABEL LF](#) [MSR516NP](#) [STA22702W](#) [STA20502](#) [SBM616J](#) [SBM616P](#) [SBM616PU](#) [SC250H](#) [SC628ADP](#) [SC628FK](#) [SCE016SD3CM4B](#) [32S4120LFPN](#)