

Latch TEKNIK

Ref. C24003C10

Ref. arch 24003

APPLICATION

- for mounting LED lighting fixtures in mounting tracks

MOUNTING

- to the lighting fixture, using a small lock



TECHNICAL SPECIFICATIONS

Material	PP	Color	<input type="checkbox"/> white
----------	----	-------	--------------------------------

SAMPLE PROJECTS



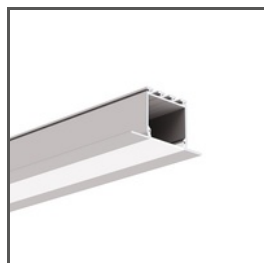
RELATED PROFILES > ARCHITECTURAL



GIZA
A05556
Ref. arch B5556



GIZA-LL
A00758
Ref. arch C0758



LARKO
A05552
Ref. arch B5552



LIPOD
A05554
Ref. arch B5554



LOKOM
A05553
Ref. arch B5553

RELATED PROFILES > MINIMALISTIC

Latch TEKNIK

Ref. C24003C10

Ref. arch 24003

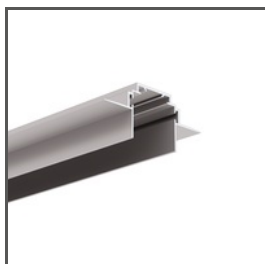


PIKO-ZM

A01168

Ref. arch C1168

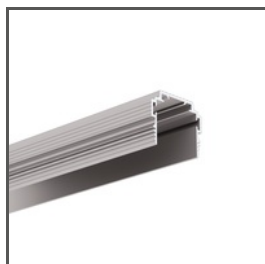
RELATED PROFILES > MOUNTING TRACKS



TEKNIK-ZM

A00399

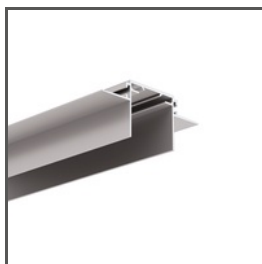
Ref. arch C0399



TEKNIK-ZM-TK

A01554

Ref. arch C1554



TEKUS-ZM

A01293

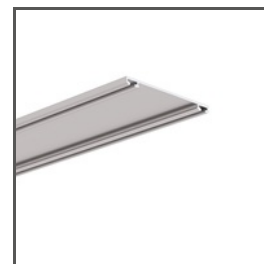
Ref. arch C1293



TEPIKO

A18046

Ref. arch 18046



TETRA-43

A04478

Ref. arch W4476



TETRA-78

A04508

Ref. arch W4508

RELATED PROFILES > UNIVERSAL



STOS-ALU

A04369

Ref. arch B4369

X-ON Electronics

Largest Supplier of Electrical and Electronic Components

Click to view similar products for [LED Lighting Mounting Accessories](#) category:

Click to view products by [KLUS](#) manufacturer:

Other Similar products are found below :

[3SU1900-0AC81-0AA0](#) [3SU1900-0AK10-0AA0](#) [3SU1401-2BB40-3AA0](#) [1SFA616921R2142](#) [A4970001](#) [A4980040](#) [C1900000](#) [C2910001](#)
[C7980001](#) [E4900001S](#) [E4990001](#) [C1010000S](#) [F7000120S](#) [F7000101](#) [1-2213678-6](#) [89270019](#) [C7940001](#) [F1000116](#) [A2000138](#) [A2000116](#)
[84000139](#) [H5010001](#) [89000116](#) [A2000139](#) [70330039P020](#) [84000116](#) [70000139](#) [J6999819](#) [V3000139](#) [J6000121](#) [89000138](#) [H5999901](#)
[89000639](#) [F1999901](#) [63580000](#) [C1999922](#) [76320041S](#) [76000116](#) [J6999902](#) [A00758A07_1](#) [AE-WLPR-60P2](#) [PA-GLAX1M-AL-10](#)
[A05554A_1](#) [C24005C10](#) [PA-ZASGLAXMNKK-00](#) [B17013S_1](#) [A05556A07_1](#) [PA-GLAXMICNK1M-AL](#) [AE-WBCUNI-10DIM](#)
[C24338C02](#)