

End cap MICRO-LNK

Ref. C24427C02, C24427C10, C24427L10, C24427C07

Ref. arch 24427, 24442, 24445, 24431



APPLICATION

- aesthetic finish and protection of the interior of the lighting fixture

MOUNTING

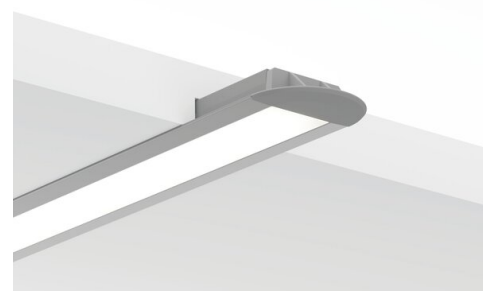
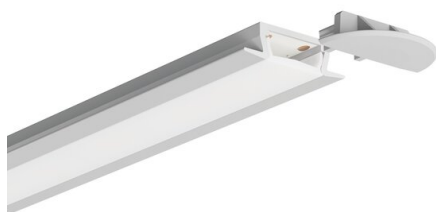
- to the profile, by pressing

TECHNICAL SPECIFICATIONS

Material	ABS
Shape	semicircular
Height	6 mm
Width	22 mm
Corrosion resistance	yes
Corrosion resistance at high salinity	yes

Color	Ref
■ gray	C24427C02 24427
□ white	C24427C10 24442
■ silver	C24427L10 24445
■ black	C24427C07 24431

SAMPLE PROJECTS



End cap MICRO-LNK

Ref. C24427C02, C24427C10, C24427L10, C24427C07

Ref. arch 24427, 24442, 24445, 24431

RELATED PROFILES > UNIVERSAL



MICRO-NK

A01587

Ref. arch C1587

X-ON Electronics

Largest Supplier of Electrical and Electronic Components

Click to view similar products for [LED Lighting Mounting Accessories](#) category:

Click to view products by [KLUS](#) manufacturer:

Other Similar products are found below :

[3SU1900-0AC81-0AA0](#) [3SU1900-0AK10-0AA0](#) [3SU1401-2BB40-3AA0](#) [1SFA616921R2142](#) [A4970001](#) [A4980040](#) [C1900000](#) [C2910001](#)
[C7980001](#) [E4900001S](#) [E4990001](#) [C1010000S](#) [F7000120S](#) [F7000101](#) [1-2213678-6](#) [89270019](#) [C7940001](#) [F1000116](#) [A2000138](#) [A2000116](#)
[84000139](#) [H5010001](#) [89000116](#) [A2000139](#) [70330039P020](#) [84000116](#) [70000139](#) [J6999819](#) [V3000139](#) [J6000121](#) [89000138](#) [H5999901](#)
[89000639](#) [F1999901](#) [63580000](#) [C1999922](#) [76320041S](#) [76000116](#) [J6999902](#) [A00758A07_1](#) [AE-WLPR-60P2](#) [PA-GLAX1M-AL-10](#)
[A05554A_1](#) [C24005C10](#) [PA-ZASGLAXMNKK-00](#) [B17013S_1](#) [A05556A07_1](#) [PA-GLAXMICNK1M-AL](#) [AE-WBCUNI-10DIM](#)
[C24338C02](#)