

# 86

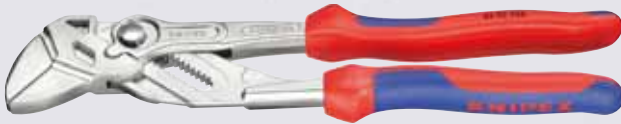
## Plier Wrenches, Plier and Wrench in a single tool

patented

86 03 180



86 05 250



86 03 300



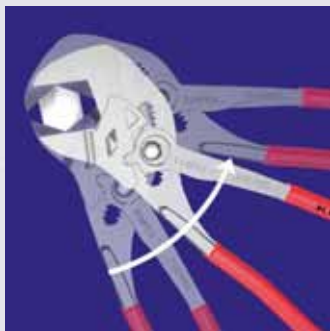
- ▶ excellent for gripping, holding, pressing and bending workpieces
- ▶ for careful installation of finished-surface components
- ▶ zero backlash jaw surface pressure prevents damage to edges of sensitive components
- ▶ fast adjustment directly on the workpiece by pushing a button
- ▶ no unintentional shift of the gripping jaws and no slipping of the joint
- ▶ replaces a complete set of spanners
- ▶ parallel jaws allow infinitely variable gripping of all widths to the specified maximum size
- ▶ the action of the jaws allows screwed connections to be tightened and released quickly using the ratchet principle
- ▶ lever transmission greater than 10 - 1 for strong gripping power
- ▶ also for tile breaking

**KNIPLEX** special

The patented Plier Wrench is a multi functional fastening, gripping and holding tool with fast adjustment pushing a button. The high lever ratio, parallel jaws without profile and infinitely variable adjustment guarantee a secure and smooth gripping of the workpiece free from any backlash.



Working on plated fittings without damage of the surface

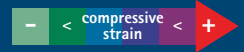


Works using the ratchet principle

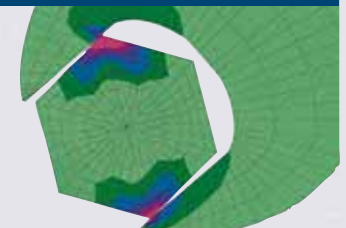


Fast adjustment by pushing a button

Compressive strain areas when force is applied on the Plier Wrench 86 03 250 and a conventional open end wrench



Plier Wrench: zero backlash under pressure



Conventional open end wrench: edge pressure causes surface damage

Article-No.	EAN-Code	Head	Handles	Working Capacities		g
				Inch	mm	
86 03 180	028260	nickel	plastic coated	1 3/8	to 35	260
250	022084	plated		1 3/4	to 46	540
300	040224			2 3/8	to 60	725
86 05 180	047162	nickel	with two-colour	1 3/8	to 35	280
250	047841	plated	dual component handles	1 3/4	to 46	570



86 03 300: enormous pressure and a capacity up to 60 mm/ 2 3/8" allows application even on large size nuts

## X-ON Electronics

Largest Supplier of Electrical and Electronic Components

*Click to view similar products for [knipex manufacturer](#):*

Other Similar products are found below :

[00 21 41 LE](#) [7006140](#) [70 07 160](#) [7902125](#) [86 03 300](#) [88 06 250](#) [92 22 13](#) [97 43 05](#) [97 49 08](#) [97 49 15](#) [98 03 09](#) [98 03 11](#) [34 12 130](#) [48 11 J1](#)  
[0301160](#) [09 02 240](#) [11 17 160](#) [64 62 120](#) [87 03 250](#) [00 20 16 P ESD](#) [00 20 18 ESD](#) [00 21 35 LE](#) [02 02 225](#) [97 91 01](#) [97 54 26](#) [97 49 24](#) [48](#)  
[21 J21](#) [41 04 250](#) [49 11 A4](#) [49 21 A41](#) [95 32 320](#) [02 06 200](#) [92 27 62](#) [88 02 250](#) [79 52 125](#) [79 42 125 ESD](#) [98 67 05](#) [95 36 315 A](#) [1301160](#)  
[12 80 040 SB](#) [77 32 120 H ESD](#) [78 91 125](#) [79 12 125](#) [81 11 250](#) [12 19 02](#) [67 01 200](#) [12 12 13](#) [8705250](#) [61 01 200](#) [73 72 180](#)