

Product information

97 40 10

Insertion tool

For LSA-Plus and identical construction design

- Tool for putting on boards, sockets and fields
- Pushing down and cutting in one operation
- For UTP and STP cables, conductor 0.4 - 0.8 mm dia.
- With integrated pulling hook and release blade
- Housing: plastic, impact-proof

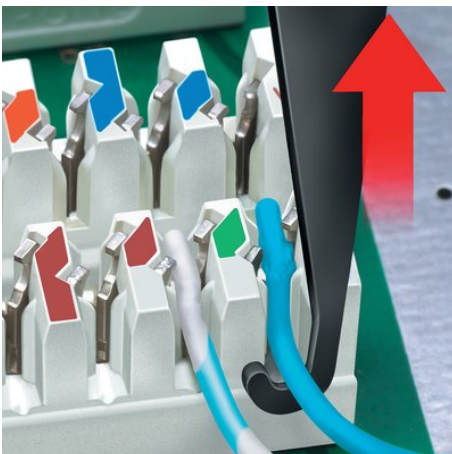


General	
Article No.	97 40 10
EAN	4003773044895
Head	burnished
weight	100 g
Dimensions	175 x 160 x 18 mm

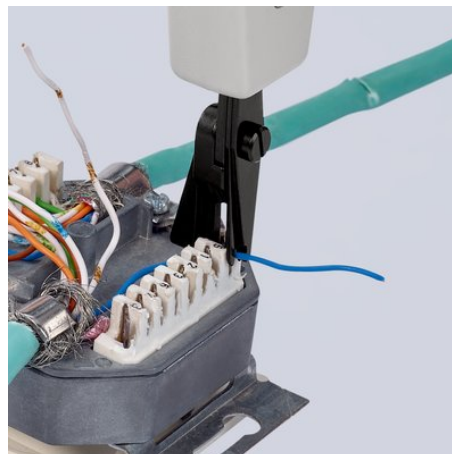
Technische Attribute	
Body	plastic
Applications	UTP- and STP-cables, LSA-Plus and identical
Capacity (diameter)	Ø 0.4 – 0.8 mm

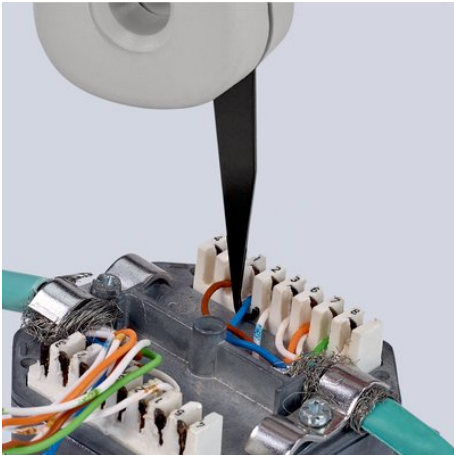
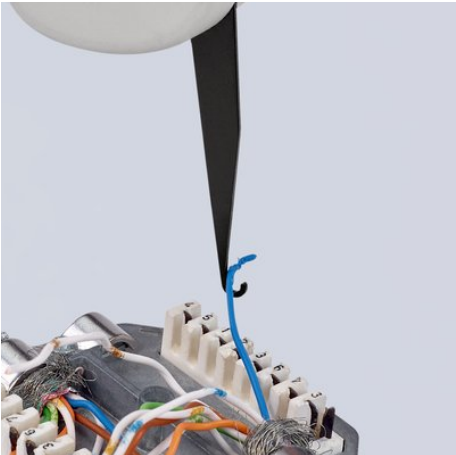
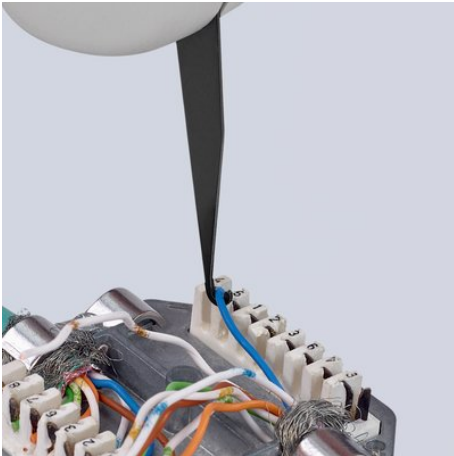
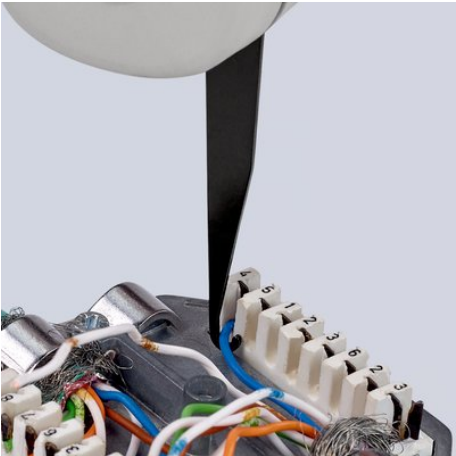
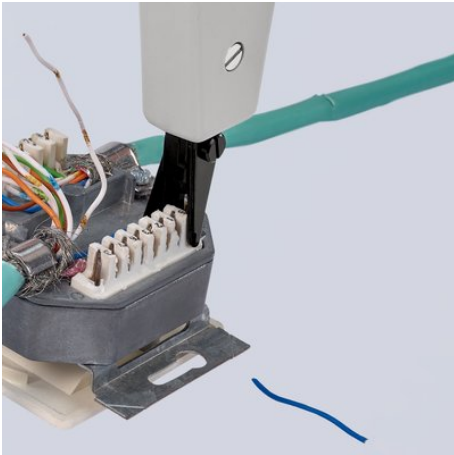
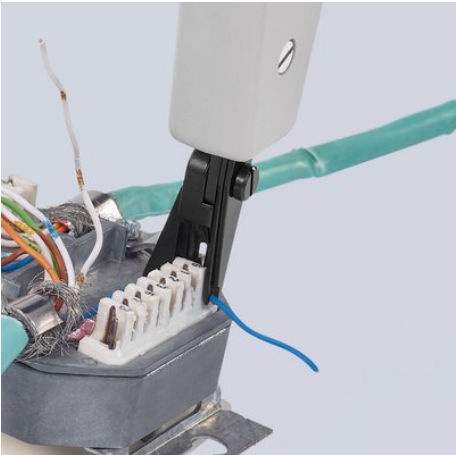
Classification	
eCl@ss 5.1.4	21040301
ETIM 5.0	EC000168
ETIM 6.0	EC000168
proficl@ss 6.0	AAA946c003
UNSPSC 13.1	27112147

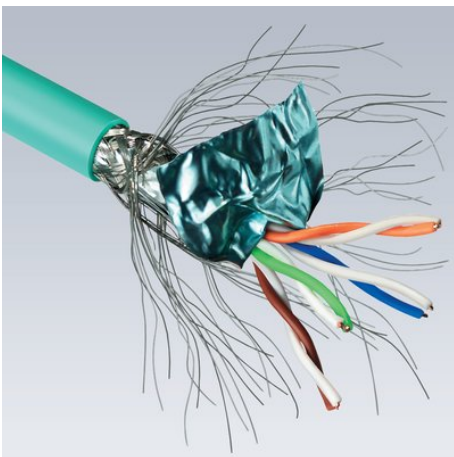
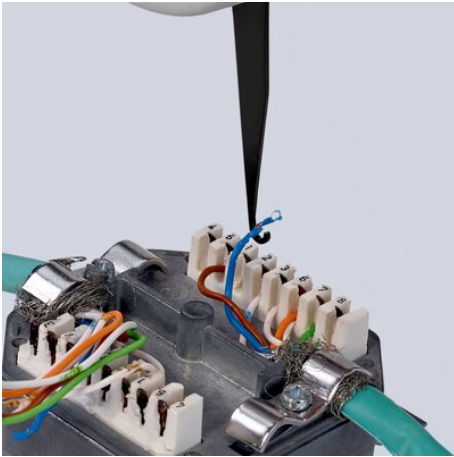
technical change and errors excepted



With integrated pulling hook







X-ON Electronics

Largest Supplier of Electrical and Electronic Components

Click to view similar products for [Crimpers / Crimping Tools](#) category:

Click to view products by [Knipex](#) manufacturer:

Other Similar products are found below :

[010-0096](#) [CT150-2-D02](#) [CT150-6-RH07](#) [622-6441LF](#) [63484-3701](#) [63800-8355](#) [63819-1875](#) [63819-2875](#) [63819-4475](#) [63827-5375](#) [662903-2](#)
[690602-6](#) [7-23471-1](#) [734611-1](#) [762637-1](#) [811242-5](#) [91362-1](#) [1-21002-3](#) [1-21002-7](#) [12118040](#) [12085270](#) [12387119-6](#) [1-22548-4](#) [125442-1](#)
[DCE.91.073.BVC](#) [DCE.91.090.3MVM](#) [DCE.91.130.5MVU](#) [DCE.91.162.BVCM](#) [DCE.91.202.BVCM](#) [1310G2](#) [1333249-1](#) [1-354003-0](#)
[1338301-1](#) [DF62/RE-MD](#) [AP105-DF11-2428S\(64\)](#) [1456088-1](#) [1-45804-6](#) [15397700](#) [AX100749](#) [1-59619-7](#) [1596970-1](#) [1-59619-8](#) [1901238-](#)
[2](#) [2119581-1](#) [KTH-1079](#) [KTH-2022](#) [KTH-2260](#) [904139-1](#) [307130-2](#) [189765-1](#)