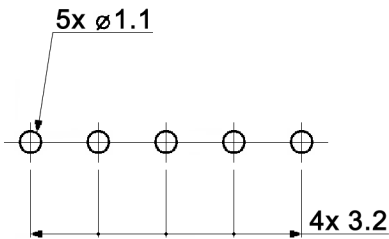
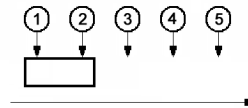


HOLE LAYOUT $\oplus 0.05$



CIRCUIT DIAGRAM
BOTTOM VIEW



Compliance: RohS II (2011/65/EU)

Tolerances: up to 10: $\pm 0.2\text{mm}$ above 10-50: $\pm 0.3\text{mm}$		Date	Name	<h1>MFP 140-R</h1>
		01/02	us	
			knitter-switch	<h2>30 02 91</h2>
Revised	06/14	dr		
Modifications	Date	Name		

Specifications:

Contact rating: 0.3A, 30V DC
Contact resistance: 20mOhm max.
Insulation resistance: 100MOhm min. at 500V DC
Dielectric strength: 500V AC for 1 minute (50/60Hz)
Operating temperature: -10°C to +60°C
Mechanical life: min. 10 000 cycles
Operating force: 300 +/-150gf
Soldering conditions: wave soldering: 260 +/-5°C, 5 +/-1sec.
Contact timing: non-shorting
Material: Terminal: brass, silver plated
 Base: phenolic, natural
 Frame: steel, nickel plated
 Contact plate: brass, silver plated
 Spring: SWC, temper
 Slider: PA, black

Packaging: Part weight 1.32g per piece
 700 pcs. per bag
 2 bags per carton-box 23x8x15cm
 10 carton-boxes per outer carton 45x24x33cm, gross weight 20.1kg

Compliance: RohS II (2011/65/EU)

Tolerances: up to 10: ±0.2mm above 10-50: ±0.3mm	Date	Name	MFP 140-R	30 02 91	Page	
	01/02	us			2/2	
			knitter-switch			
Modifications	Date	Name				

X-ON Electronics

Largest Supplier of Electrical and Electronic Components

Click to view similar products for [Slide Potentiometers](#) category:

Click to view products by [Knitter-Switch](#) manufacturer:

Other Similar products are found below :

[M22](#) [MHS133K](#) [MSS12A](#) [MSSA22](#) [M42A](#) [MSS42G](#) [SS-4928](#) [RSA0K11A901L](#) [SLB124145](#) [SLB1340R45](#) [RA6020F-10-20D1-B50K](#)
[RA4520F-10-20D1-B50K](#) [TSS11AGPC](#) [X22205CAAF](#) [448XC2103BDN](#) [X22205A-437W](#) [T22205BAAE](#) [SS-22J08-G5](#) [X22205AAAL](#)
[K22208EAAG](#) [PS15-10PC1BR10K](#) [1101M1S3ZQI2](#) [1201M1S1ZBE2](#) [1101M2S4AGE2](#) [1101M2S6ABE2](#) [1201M1S3ZBE2](#) [EVA-](#)
[JQKR15Y14](#) [EVA-NADR15A14](#) [EVA-NADR15D14](#) [EVA-NE4R15A14](#) [EVB-NADR15Y14](#) [ASE1D](#) [ASE1E](#) [ASE2D](#) [MFP113D](#) [MFP130](#)
[MFP1323](#) [MFP1424](#) [MFP161D](#) [MFP2220R](#) [MFP231P](#) [MFP261N](#) [MMP1010DRA1](#) [MMP131](#) [L202021MS02Q](#) [MFP120](#) [MFP 130 R](#)
[MFP1323R](#) [MFP140](#) [MFP140-R](#)