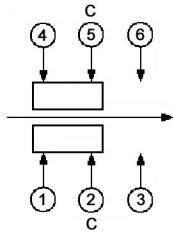
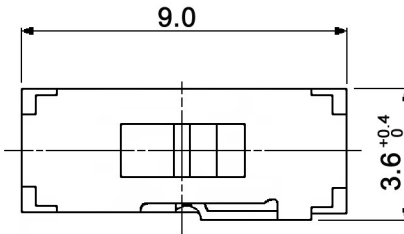


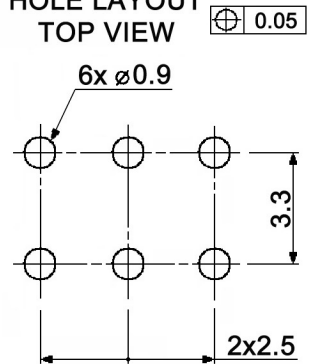
**CIRCUIT DIAGRAM**



C: COMMON PIN



**HOLE LAYOUT TOP VIEW**



**Specifications:**

- Contact rating:** 0.15A, 12V DC  
300mA, 6V DC
- Contact resistance:** 70mOhm max.
- Insulation resistance:** 100MOhm min. at 500V DC for 1 minute
- Operating temperature:** -25°C to +85°C
- Mechanical life:** 5 000 cycles min.
- Operating force:** 200 +/-100gf
- Soldering conditions:** 260 +/-5°C, 5 +/-1sec.
- Material:** Terminal: brass strip, silver plated  
Cover: SUS, washing  
Slider: PA46, natural  
Contact plate: C7025, silver plated  
Case: PA46, black
- Packaging unit:** MMP 221: 700 pcs. / tray, 5 trays / box  
MMP 221 S: 50 pcs. / tube, 10 tubes / bundle

**Compliance:** RohS II (2011/65/EU)

Tolerances: up to 10: ±0.2mm above 10-50: ±0.3mm	Date	Name
	11/07	dr
Packaging	07/15	dr
Rename	09/12	dr
Contact rating	12/07	dr
Modifications	Date	Name

**MMP 221 / MMP 221 S**

**knitter-switch**

**21 13 14**

Page

1/1

## X-ON Electronics

Largest Supplier of Electrical and Electronic Components

*Click to view similar products for [Slide Potentiometers](#) category:*

*Click to view products by [Knitter-Switch](#) manufacturer:*

Other Similar products are found below :

[M22](#) [SS-4928](#) [RSA0K11A901L](#) [RA6020F-10-20D1-B50K](#) [RA4520F-10-20D1-B50K](#) [X22205CAAF](#) [RSA0N11B9A03](#) [448XC2103BDN](#)  
[K22208EAAG](#) [PS15-10PC1BR10K](#) [3048L-2-503](#) [MFP 211-N](#) [CDE23N-60-B10K](#) [CDE23N-60-B1K](#) [CDE23N-60-B50K](#) [1825160-1](#)  
[1825161-2](#) [1825257-1](#) [1825259-2](#) [1825261-2](#) [X22205AAAL](#) [PS100-2B1AR10K](#) [1825255-5](#) [PTA6044-2015CPB103](#) [PTA6044-2015CPB104](#)  
[PTA6044-2015CPA103](#) [PTA6044-2015CPA104](#) [PS100-1B1BR10K](#) [PTA3044-2015CPB504](#) [PS20-10PC1BR10K](#) [RS08U11AZ001](#)  
[RA4520F-10-20D1-B1K](#) [PTL30-15R0-104B2](#) [PTE60-202B-102B2](#) [PTA6044-2015DPB103](#) [RA6020F-10-20D1-B100K](#) [RA6020F-10-15F2-](#)  
[B2K](#) [RA4543F-20-15D1-B10K-01](#) [RA3043F-20-10EB1-A100K](#) [RA6043F-20-10EB1-A5K](#) [RA6020F-10-20D1-B250K](#) [RA6020F-10-15F2-](#)  
[B5K](#) [RA6020F-10-15F2-B1K](#) [RA60K1F-10-13D1-B100K-011](#) [RA3043F-20-10EB1-A50K](#) [RA4520F-10-20D1-B5K](#) [SX254](#) [CDE23N-60-](#)  
[B5K](#) [CDE91N-60-B100K](#) [PTB0153-2010BPB103](#)