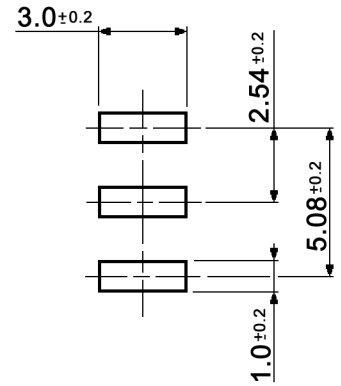


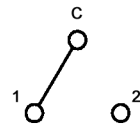
P.C.B. LAYOUT



Specifications:

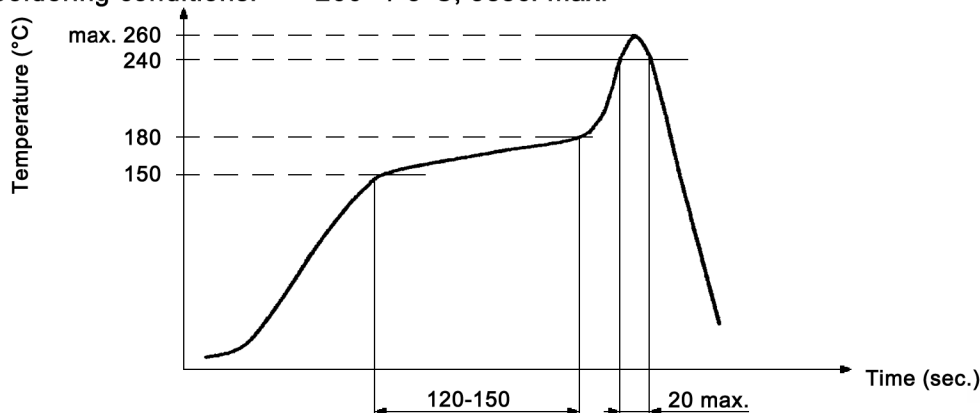
- Contact rating: 0.2A, 24V; 0.5A, 12V
- Contact resistance: 50mOhm max.
- Insulation resistance: 10 000MOhm min. at 500V DC
- Dielectric strength: 500V AC for 1 minute (2mA)
- Operating temperature: -40°C to +105°C
- Storage temperature: -40°C to +105°C
- Mechanical life: 5 000 cycles
- Operating force: 800gf max.
- Packing: 53 pcs. / tube
- Soldering conditions: 260 +/-3°C, 5sec. max.

CIRCUIT DIAGRAM



SWITCH POSITION

- A B
- C-1 C-2



| | | | | | |
|--|-------|------|-----------------------|-------------------------|-----|
| Tolerances: 0 - 1: ±0.1mm 1 - 4: ±0.3mm 4 - 16: ±0.5mm | Date | Name | <h1>MMS 1010 D-R</h1> | | |
| | 01/03 | us | | | |
| Temperatures | 06/16 | dr | <h2>30 03 42</h2> | Page | |
| Operating temperature | 01/13 | dr | | <h3>knitter-switch</h3> | 1/2 |
| Revised | 02/12 | dr | | | |
| Modifications | Date | Name | | | |

Material:

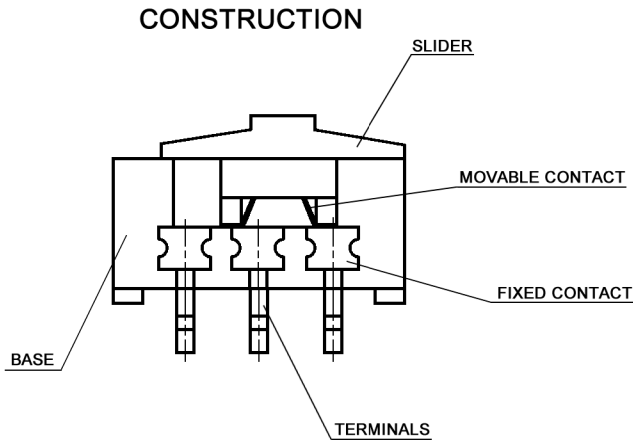
Case: PA9T glass reinforced nylon, black

Slider: PA46 glass reinforced nylon, ivory

Terminals: brass, 0.075µm gold plated over 1µm nickel

Fixed contact: brass, 0.075µm gold plated over 1µm nickel

Movable contact: phosphor bronze, 0.125µm gold plated over 1µm nickel



| | | | | |
|--|-------|------|-----------------------|--|
| Tolerances: 0 - 1: ±0.1mm 1 - 4: ±0.3mm 4 - 16: ±0.5mm | Date | Name | MMS 1010 D-R | |
| | 01/03 | us | | |
| | | | 30 03 42 | |
| | | | | |
| | | | knitter-switch | |
| | | | Page | |
| | | | 2/2 | |
| Modifications | Date | Name | | |

X-ON Electronics

Largest Supplier of Electrical and Electronic Components

Click to view similar products for [Slide Switches](#) category:

Click to view products by [Knitter-Switch](#) manufacturer:

Other Similar products are found below :

[6-1437581-1](#) [M43R](#) [MHS123K15D](#) [MHSS1104A](#) [MMD](#) [GH49S010001](#) [GH49WW00001](#) [1437576-8](#) [EPS1PC1](#) [1825074-1](#) [1825160-3](#)
[1825167-2](#) [25139NLDB](#) [25436NLDB](#) [25449NAH](#) [25536NA](#) [L101011ML04B](#) [SLB1240R45](#) [SLSA12004](#) [1825078-1](#) [1825080-4](#) [1825081-1](#)
[1825269-1](#) [1825270-2](#) [STS141RA04](#) [T2215BEN506](#) [GF-124-0204](#) [GH46P000001](#) [GH46W000001](#) [GH49P010001](#) [25339NA](#) [25436NLDH](#)
[CST91246FK](#) [TG36P000000](#) [TG36P000050](#) [47227LFE](#) [49331L](#) [MHSS1105A](#) [50208L](#) [HW4S-5LF22N3](#) [L202091MS02Q](#) [4-1437581-7](#)
[X2225CR-437W](#) [48BFSP3M2QT](#) [49329L](#) [1101M1S3ZB8E2](#) [1-1437581-1](#) [EG1218REDACTUATOR](#) [TG39W000000](#) [1825075-1](#)