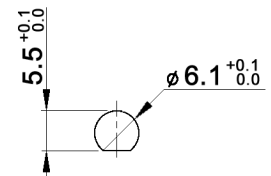


PANEL MOUNTING



CONTACT ARRANGEMENT

code for x	function	connected terminals
D	ON - ON	1-2 alternating with 2-3
F	ON - MOM	rest position: 1-2; pushed down: 2-3

Specifications:

- Contact rating: 3A, 250V AC / 6A, 125V AC
4A, 30V DC / 5A, 12V DC
6A, 6V DC
- Contact resistance: 20mOhm max.
- Insulation resistance: 1 000MOhm min. at 500V DC
- Dielectric strength: 1 500V, 50Hz for the duration of 1 minute
- Operating temperature: -45°C to +140°C
- Mechanical life: min. 30 000 cycles
- Soldering conditions: hand-soldering: max.: 420°C, 3sec., 60W
auto-soldering: max.: 270°C, 5sec.
- Mounting instruction: max. torque: 49Ncm
- IP rating: IP67
- Material: Terminal / contact: brass, silver plated
Case: DAP
Housing: stainless steel, CNS9265
Bushing: copper alloy, C3604BD nickel plated
Actuator: copper alloy, C3604BD chrome plated
- Included accessories: 1 pc. nut M6x0.75, nickel plated, 9mm wrench size
1 pc. tooth washer
1 pc. O-ring, silicone

Compliance: RohS II (2011/65/EU)

Tolerances: 0.00: ±0.25mm 0.0: ±0.40mm	Date	Name	MPE 106 x
	06/09	dr	
Contact arrangement	07/15	dr	30 18 47
Dimension	01/11	dr	
Modifications	Date	Name	knitter-switch
			Page 1/1

X-ON Electronics

Largest Supplier of Electrical and Electronic Components

Click to view similar products for [Pushbutton Switches](#) category:

Click to view products by [Knitter-Switch](#) manufacturer:

Other Similar products are found below :

[8940K2012](#) [8971K1133](#) [LW1L-M1C10V-A](#) [LW1L-M1C70-A](#) [LW2L-A1C20M-GD](#) [LW2L-M1C20M-A](#) [60324L](#) [M22-D-R-GB0/K11](#) [M7E-HRN2](#) [67021K512](#) [67081K512X](#) [701PB580](#) [7199K101](#) [810K12910](#) [810KSV30B](#) [MML21EA2ADK](#) [MML21KA3ABK](#)
[MML23KA3AC05K-001](#) [MML23KW3AA01W](#) [8418K2](#) [8442K3](#) [8450K1](#) [860K11911T01A](#) [861901](#) [861K11911T01A07](#)
[861K13810T00A14](#) [861K13911](#) [8646AB6X718UL](#) [8646ABUL](#) [9001KXRK](#) [907AYY100](#) [PMHD155A1](#) [9533CD4+U574+U4922](#) [95-414.000](#) [99-450.837](#) [99-453.837](#) [PV3H2B0NN-341](#) [1203MRA](#) [A22NZBGANGA](#) [A22NZBNANGA](#) [A22NZMPATRA](#) [A2PMA1X03EC56](#)
[A3A-5123-02](#) [A3A-7140](#) [A3A-7310](#) [A3A-7340](#) [A3U-TMW-A2C-5M](#) [A595](#) [12037A2ULCSA](#) [ABD122N-B](#)