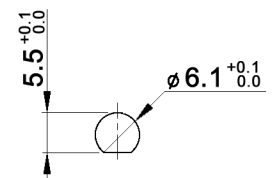


**PANEL MOUNTING**

**CONTACT ARRANGEMENT**

| code for x | function | connected terminals                            |
|------------|----------|--|
| N          | ON - ON  | 1-2, 4-5 alternating with 2-3, 5-6             |
| R          | ON - MOM | rest position: 1-2, 4-5; pushed down: 2-3, 5-6 |



**RATING**

| y     | contacts                         | all other conductive parts     | rating DC  | rating AC                  |
|-------|----------------------------------|--------------------------------|--|----------------------------|
| empty | Ag (solid)                       | Brass, 10 µm Ag over 1.5 µm Ni | 6V / 6 A<br>12V / 5 A<br>30 V / 4 A                  | 125 V / 6 A<br>250 V / 3 A |
| B     | Brass, 2 µm Au over 3 µm Ni      | Brass, 2 µm Au over 3 µm Ni    | max. 0.4 VA, max. 20 V AC/DC                         |                            |
| G     | Ag (solid), 2 µm Au over 3 µm Ni | Brass, 2 µm Au over 3 µm Ni    | 6V / 6 A<br>12V / 5 A<br>30 V / 4 A<br>150 V / 10 mA | 125 V / 6 A<br>250 V / 3 A |

**Specifications:**

- Contact resistance: 20mOhm max.
- Insulation resistance: 1 000MOhm min. at 500V DC
- Dielectric strength: 1 500V, 50Hz for the duration of 1 minute
- Operating temperature: -45°C to +140°C
- Mechanical life: min. 30 000 cycles
- Soldering conditions: hand-soldering: max.: 420°C, 3sec., 60W  
auto-soldering: max.: 270°C, 5sec.
- Mounting instruction: max. torque: 49Ncm
- IP rating: IP67
- Material: Terminal / contact: brass, silver plated  
Case: DAP  
Housing: stainless steel, CNS9265  
Bushing: copper alloy, C3604BD nickel plated  
Actuator: copper alloy, C3604BD chrome plated
- Included accessories: 1 pc. nut M6x0.75, nickel plated, 9mm wrench size  
1 pc. tooth washer  
1 pc. O-ring, silicone

**Compliance: RohS II (2011/65/EU)**

|   |       |      |                       |
|---|-------|------|-----------------------|
| Tolerances: 0.00: ±0.25mm<br>0.0: ±0.40mm | Date  | Name | <h1>MPE 206 xy</h1>   |
|   | 06/09 | dr   |                       |
|   |       |      |                       |
|   |       |      |                       |
| Contact arrangement                       | 07/15 | dr   | <h1>30 18 48</h1>     |
| Revised                                   | 07/12 | dr   |                       |
| Dimension                                 | 01/11 | dr   |                       |
| Modifications                             | Date  | Name | <b>knitter-switch</b> |
|   |       |      | Page<br>1/1           |

## X-ON Electronics

Largest Supplier of Electrical and Electronic Components

*Click to view similar products for [Pushbutton Switches](#) category:*

*Click to view products by [Knitter-Switch](#) manufacturer:*

Other Similar products are found below :

[8940K2012](#) [8971K1133](#) [LW1L-M1C10V-A](#) [LW1L-M1C70-A](#) [LW2L-A1C20M-GD](#) [LW2L-M1C20M-A](#) [60324L](#) [M22-D-R-GB0/K11](#) [M7E-HRN2](#) [67021K512](#) [67081K512X](#) [701PB580](#) [7199K101](#) [810K12910](#) [810KSV30B](#) [MML21EA2ADK](#) [MML21KA3ABK](#)  
[MML23KA3AC05K-001](#) [MML23KW3AA01W](#) [8418K2](#) [8442K3](#) [8450K1](#) [860K11911T01A](#) [861901](#) [861K11911T01A07](#)  
[861K13810T00A14](#) [861K13911](#) [8646AB6X718UL](#) [8646ABUL](#) [9001KXRK](#) [907AYY100](#) [PMHD155A1](#) [9533CD4+U574+U4922](#) [95-414.000](#) [99-450.837](#) [99-453.837](#) [PV3H2B0NN-341](#) [1203MRA](#) [A22NZBGANGA](#) [A22NZBNANGA](#) [A22NZMPATRA](#) [A2PMA1X03EC56](#)  
[A3A-5123-02](#) [A3A-7140](#) [A3A-7310](#) [A3A-7340](#) [A3U-TMW-A2C-5M](#) [A595](#) [12037A2ULCSA](#) [ABD122N-B](#)