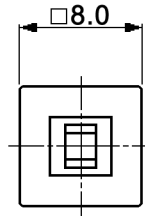
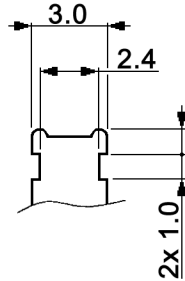
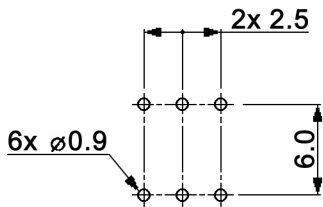


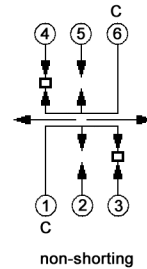
DETAIL A



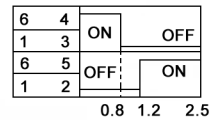
HOLE LAYOUT TOP VIEW ± 0.05



CIRCUIT DIAGRAM
C: COMMON PIN



TIME LAG DIAGRAM



for momentary only

Compliance: RohS II (2011/65/EU)

Tolerances: up to 10: ± 0.20 mm above 10-50: ± 0.30 mm		Date	Name
		01/06	dr
Table "y"	01/15	dr	
Revised	11/13	dr	
Specifications	10/13	dr	
Gold plating	05/12	dr	
Rename	04/12	dr	
Revised	02/12	dr	
Revised	09/11	dr	
Modifications	Date	Name	

MP22E08x-O-y-z

knitter-switch

30 07 54

Page

1/2

Specifications:

Contact rating: 0.1A, 30V DC
 Contact resistance: 70mOhm max., after life cycle and humidity test 150mOhm max.
 Insulation resistance: 100MOhm min., after life cycle test min. 10MOhm
 Dielectric strength: 500V AC for 1 minute
 Operating temperature: -10°C to +60°C
 Mechanical life: 10 000 cycles
 Soldering conditions: 260 +/-5°C, 5 +/-1sec; manual or dip-soldering only, no pre-heat
 Material: Spring: SWC, temper
 Case: PBT, black
 Housing: POM, white/black
 Stem: POM, white
 Contact plate: C1720
 Terminals: brass

x	Switching function	y	Operating force (gf)	Remark
empty	on - (on), momentary	060	60 +/-25	for momentary only
L	on - on, latching	150	150 +/-50	for momentary only
		empty	180 +/-80	for latching only
		350	350 +/-100	for latching only
		500	500 +/-100	for momentary only
		z	Contact / terminal surface	
		(empty)	silver plated over nickel	
		AU3	0.075µm gold plated over nickel	

Compliance: RohS II (2011/65/EU)

Tolerances: up to 10: ±0.20mm above 10-50: ±0.30mm		Date	Name	MPSA 22E08x-O-y-z
		01/06	dr	
			knitter-switch	30 07 54
				Page 2/2
Modifications	Date	Name		

X-ON Electronics

Largest Supplier of Electrical and Electronic Components

Click to view similar products for [Pushbutton Switches](#) category:

Click to view products by [Knitter-Switch](#) manufacturer:

Other Similar products are found below :

[8940K2012](#) [8971K1133](#) [LW1L-M1C10V-A](#) [LW1L-M1C70-A](#) [LW2L-A1C20M-GD](#) [LW2L-M1C20M-A](#) [60324L](#) [M22-D-R-GB0/K11](#) [M7E-HRN2](#) [67021K512](#) [67081K512X](#) [701PB580](#) [7199K101](#) [810K12910](#) [810KSV30B](#) [MML21EA2ADK](#) [MML21KA3ABK](#)
[MML23KA3AC05K-001](#) [MML23KW3AA01W](#) [8418K2](#) [8442K3](#) [8450K1](#) [860K11911T01A](#) [861901](#) [861K11911T01A07](#)
[861K13810T00A14](#) [861K13911](#) [8646AB6X718UL](#) [8646ABUL](#) [9001KXRK](#) [907AYY100](#) [PMHD155A1](#) [9533CD4+U574+U4922](#) [95-414.000](#) [99-450.837](#) [99-453.837](#) [PV3H2B0NN-341](#) [1203MRA](#) [A22NZBGANGA](#) [A22NZBNANGA](#) [A22NZMPATRA](#) [A2PMA1X03EC56](#)
[A3A-5123-02](#) [A3A-7140](#) [A3A-7310](#) [A3A-7340](#) [A3U-TMW-A2C-5M](#) [A595](#) [12037A2ULCSA](#) [ABD122N-B](#)