

CONTACT ARRANGEMENT

code for x	function	toggle towards keyway	toggle opposite to keyway
D	On-On	1-2, 4-5, 7-8	2-3, 5-6, 8-9
F	Mom-On		

code for x	function	toggle towards keyway	toggle in center	toggle opposite to keyway
E	On-Off-On			
G	Mom-Off-Mom	1-2, 4-5, 7-8	open	2-3, 5-6, 8-9
H	Mom-Off-On			
EA	On-On-On	1-2, 4-5, 7-8	2-3, 4-5, 8-9	2-3, 5-6, 8-9

Specifications:

Contact rating: 3A, 250V AC / 6A, 125V AC
 4A, 30V DC / 5A, 12V DC
 6A, 6V DC

Contact resistance: 20mOhm max.

Insulation resistance: 1 000MOhm min. at 500V DC

Dielectric strength: 1 500V, 50Hz for the duration of 1 minute

Operating temperature: -45°C to +140°C

Mechanical life: min. 200 000 cycles

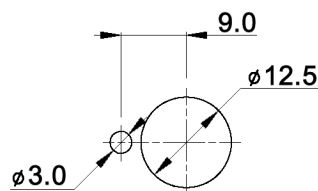
Soldering conditions: hand-soldering: max.: 420°C, 3sec., 60W
 auto-soldering: max.: 270°C, 5sec.

Mounting instruction: max. torque: 137Ncm

Material: Terminal / contact: brass, silver plated
 Case: DAP
 Housing: stainless steel, CNS9265
 Bushing: copper alloy, C3604BD nickel plated
 Actuator: copper alloy, C3604BD chrome plated

Included accessories: 2 pcs. nut 15/32-32, nickel plated, 14mm wrench size
 1 pc. tooth washer
 1 pc. locking washer

PANEL MOUNTING



Tolerances: 0.00: ±0.25mm 0.0: ±0.40mm	Date	Name
	04/09	dr

MTG 306 x

knitter-switch

30 18 03

Page
1/1

Modifications	Date	Name
---------------	------	------

X-ON Electronics

Largest Supplier of Electrical and Electronic Components

Click to view similar products for [Toggle Switches](#) category:

Click to view products by [Knitter-Switch](#) manufacturer:

Other Similar products are found below :

[8928K478](#) [8A1-C-222](#) [020017-13](#) [60012L](#) [6006L](#) [CS115W](#) [CS120W](#) [6663](#) [7101SPDV30BE](#) [7103SDV30BE](#) [7105D](#) [7108P3YAV2BE](#)
[71YY50282](#) [7300K36](#) [7301K38](#) [7306K36](#) [7310K36](#) [7506K4](#) [7592K6](#) [7660K12](#) [7691K14](#) [7700K1](#) [8391K108](#) [8396K108](#) [8812K14](#)
[8824K14](#) [8828K13](#) [8835K3](#) [8858K44](#) [PS83-121G](#) [1-1825192-0](#) [A201SCWZB04](#) [A207SYCB04](#) [A208J61ZQ0004](#) [A221T1TCQ](#)
[A232M1YCQ](#) [A323S1CWZQ](#) [A423S1CWZG-M8](#) [1201W](#) [12149A-3V](#) [12156AX408](#) [12147AGKX679](#) [12246X778](#) [12TW49-3D](#) [130312](#)
[13037L](#) [13001X](#) [AE101MD1W4B04](#) [AE208SD1W4B04](#) [MS24659-22D](#)