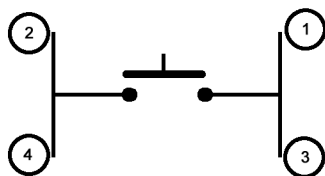
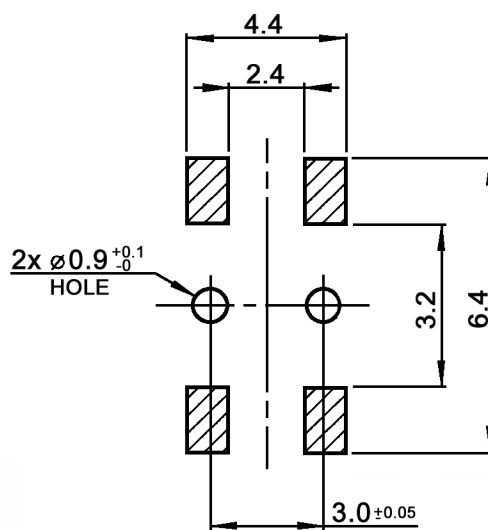


CIRCUIT DIAGRAM



P.C.B. MOUNTING



Compliance: RohS II (2011/65/EU)

Tolerances: ±0.2mm	Date	Name
	09/10	dr
Operating force	06/16	dr
Pick & place-tab	02/16	dr
Revised	08/15	dr
Soldering conditions	10/14	dr
Modifications	Date	Name

TSS 313-x T-RA

knitter-switch

30 21 78

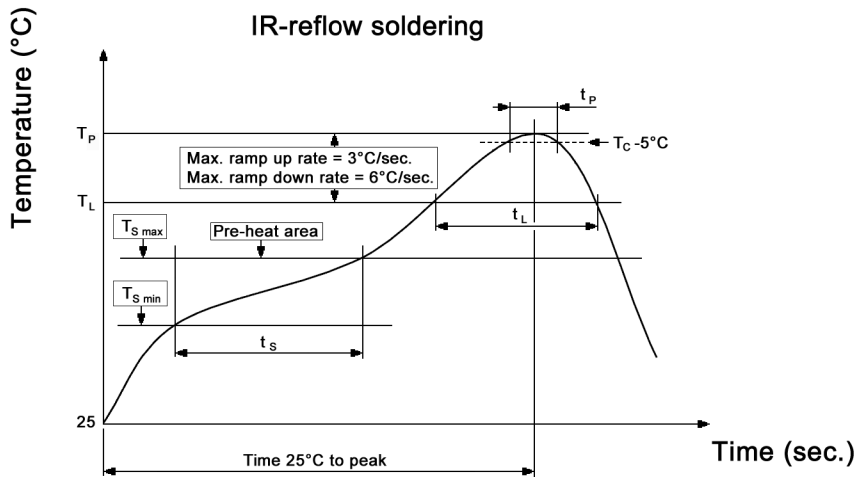
Page

1/3

Specifications:

Contact rating: 0.05A (max.), 12V DC
 Contact resistance: 500mOhm max.
 Insulation resistance: 100MOhm min. at 100V DC for 1 minute
 Dielectric strength: 250V AC (50/60Hz, 2mA) for 1 minute
 Operating temperature: -40°C to +85°C
 Mechanical life: 50 000 cycles
 Material: Terminal: brass, silver plated
 Case: LCP, black
 Contact: stainless steel, silver plated
 Cover: stainless steel, washing
 Stem: PA, blue
 Tape: polyimide, yellow

Soldering conditions:

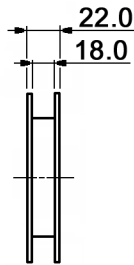
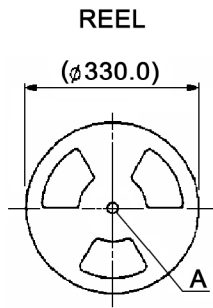


x	Operating force
160	160 +/-50gf
200	200 +/-60gf
empty	250 +/-70gf

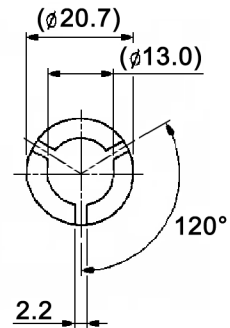
Compliance: RohS II (2011/65/EU)

Tolerances: ±0.2mm	Date	Name	<h1>TSS 313-x T-RA</h1>
	09/10	dr	
	knitter-switch		<h2>30 21 78</h2>
Modifications	Date	Name	Page 2/3

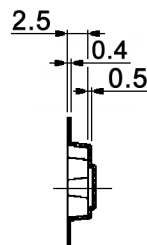
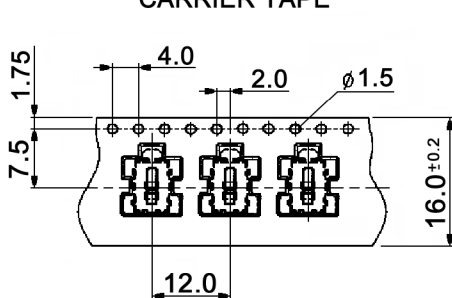
Packaging:



"A" DETAIL



CARRIER TAPE



COVER TAPE



Roll-direction →

Packaging unit: 1 700 pcs. / reel
Compliance: RohS II (2011/65/EU)

Tolerances: $\pm 0.2\text{mm}$	Date	Name
	09/10	dr
Modifications	Date	Name

TSS 313-x T-RA

knitter-switch

30 21 78

Page

3/3

X-ON Electronics

Largest Supplier of Electrical and Electronic Components

Click to view similar products for [Tactile Switches](#) category:

Click to view products by [Knitter-Switch](#) manufacturer:

Other Similar products are found below :

[KMR633NG LFG](#) [5GTH92001](#) [5GTH9202242](#) [6426-201-11343](#) [MJ1226](#) [MJTP1109B](#) [MJTP1138EAUTR](#) [MJTP1230BL](#) [MJTPSHW](#)
[GS6.90F300QP](#) [1-1977223-0](#) [1-1977120-4](#) [ADTSA62NV](#) [ADTSA62RV](#) [ADTSA63KV](#) [ADTSA644NV](#) [ADTSM24NVTR](#) [ADTSMW66NV](#)
[ADTSMW67RV](#) [ATM533VTR](#) [1571300-3](#) [B3F-3123](#) [B3F-6055A](#) [B3F-B32-01-KIT](#) [1977177-8](#) [1977266-1](#) [2-1977223-4](#) [2-1977223-7](#)
[ADTS644KV](#) [ADTSA61RV](#) [ADTSA62KV](#) [ADTSA63NV](#) [ADTSA63RV](#) [ADTSA65NV](#) [ADTSM21NSVTR](#) [ADTSM25RVTR](#)
[ADTSM31RVTR](#) [ADTSM32NVTR](#) [ADTSM61YVTR](#) [ADTSM63SVTR](#) [ADTSM644KVTR](#) [ADTSMW64RV](#) [ADTSMW69NV](#)
[FSMRA4JHA04](#) [GS4.70F300QP](#) [D38999/20JJ37SA](#) [TL1105B](#) [TL1105J](#) [ATH447K2Q](#) [ATM534VTR](#)