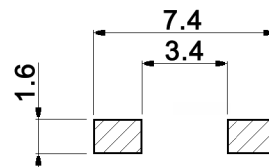


P.C. MOUNTING

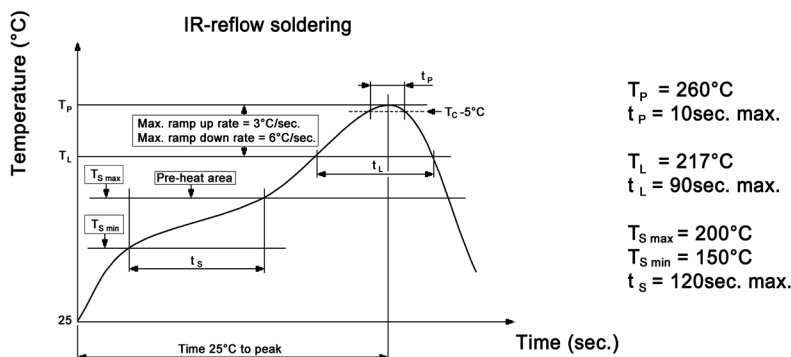


x	Height	Packaging unit	y	Operating force	Color of stem	Electrical life
1	4.3mm	1 800 pcs./reel	N	160 +/-50gf	brown	50 000 cycles
2	5.0mm	1 600 pcs./reel	R	260 +/-50gf	red	30 000 cycles
			S	320 +/-80gf	salmon	50 000 cycles
			Y	520 +/-130gf	yellow	30 000 cycles

Specifications:

Contact rating: 50mA, 12V DC
 Contact resistance: 100mOhm max.
 Insulation resistance: 100MOhm min. at 500V DC
 Dielectric strength: 250V, 50Hz for the duration of 1 minute
 Operating temperature: -40°C to +90°C
 Travel: 0.25mm +0.2/-0.1mm
 Mounting: on pc-board - SMD
 Material: Contacts: stainless steel, 0.5µm silver plated
 Terminals: brass, 1µm silver plated over 1µm nickel
 Cover: stainless steel
 Base / stem: high-temp. nylon meets UL94V-0 or PPA

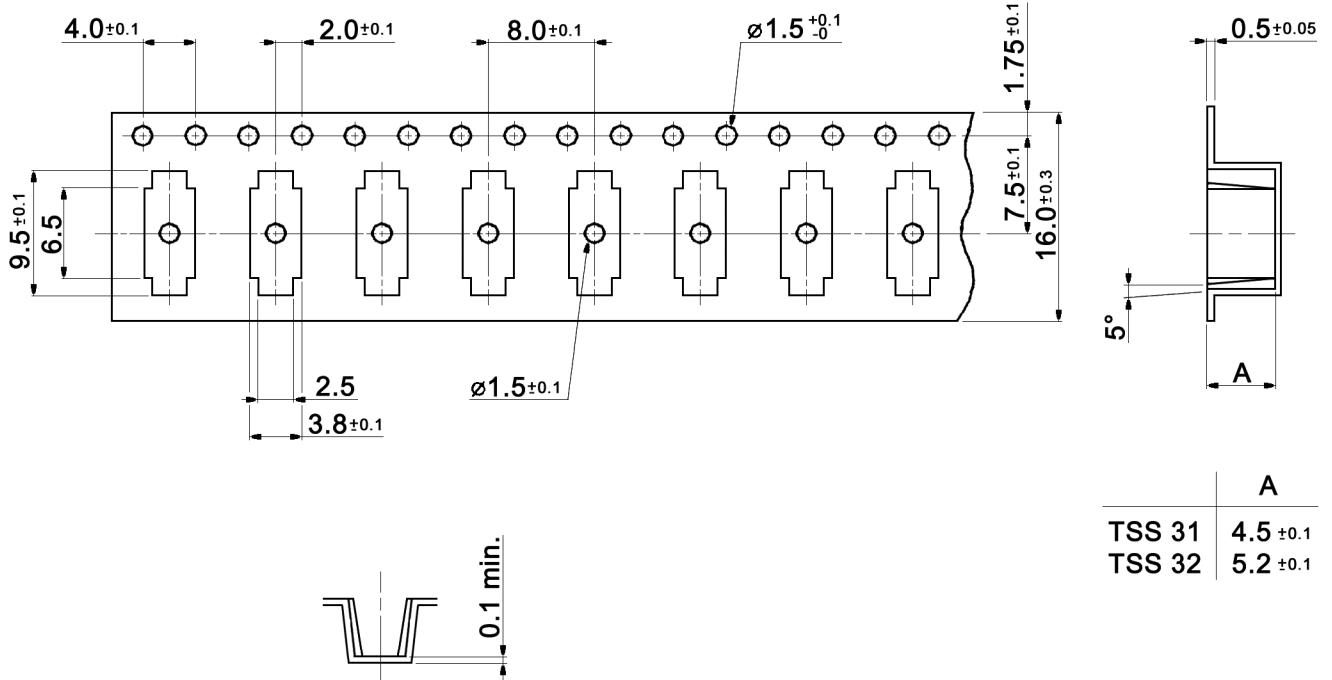
Soldering conditions:



Compliance: RohS III (2015/863/EU)

Tolerances:			Date	Name	TSS 3x y
			08/07	RMG	
Picking area	03/20	dr			
Plating	12/17	dr			
Operating temperature	07/17	dr			30 06 17
Soldering conditions	10/15	dr			
Table "y"	09/11	dr	knitter-switch		Page
Specifications	08/09	dr			1/2
Modifications	Date	Name			

Packaging:



	A
TSS 31	4.5 ±0.1
TSS 32	5.2 ±0.1

Compliance: RohS III (2015/863/EU)

Tolerances:			Date	Name	TSS 3x y
			08/07	RMG	
Picking area	03/20	dr			
Plating	12/17	dr			
Operating temperature	07/17	dr			
Soldering conditions	10/15	dr			
Table "y"	09/11	dr	knitter-switch		30 06 17
Specifications	08/09	dr			
Modifications	Date	Name			Page
					2/2

X-ON Electronics

Largest Supplier of Electrical and Electronic Components

Click to view similar products for [Tactile Switches](#) category:

Click to view products by [Knitter-Switch](#) manufacturer:

Other Similar products are found below :

[5GTH92001](#) [1-1977120-4](#) [ADTSA62NV](#) [ADTSA62RV](#) [ADTSA63KV](#) [ADTSA644NV](#) [ADTSMW66NV](#) [ADTSMW67RV](#) [B3F-3123](#) [B3F-6055A](#) [B3F-B32-01-KIT](#) [1977177-8](#) [1977266-1](#) [ADTS644KV](#) [ADTSA61RV](#) [ADTSA63NV](#) [ADTSA63RV](#) [ADTSM21NSVTR](#) [ADTSM32NVTR](#) [ADTSM63SVTR](#) [ADTSM644KVTR](#) [ADTSMW64RV](#) [ADTSMW69NV](#) [FSMRA4JHA04](#) [GS4.70F300QP](#) [3ESH9R](#) [506E00201](#) [3FTL600RAS](#) [3FTL640RAS](#) [Y96K132V0FPLFS](#) [101-TS5022T1601-EV](#) [5GSH92001](#) [5GTH9658222](#) [KSJ0A231](#) [80SH](#) [LFG](#) [ADTSM31NVTR](#) [EVQ-P1D05K](#) [MJTP1162TR](#) [ADTSM63KV](#) [2-1977120-7](#) [TSJW-5.2-260-TR](#) [KMT011MNGJLHS](#) [B3WN6002S](#) [ADTSA648RV](#) [70-201.0](#) [ADTSG648NV](#) [ADTSM62KSVTR](#) [ATA600VTR](#) [ADTSG66RV](#) [ADTS61NV](#) [ADTSM62KVTR](#)