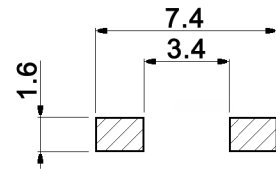


P.C. MOUNTING

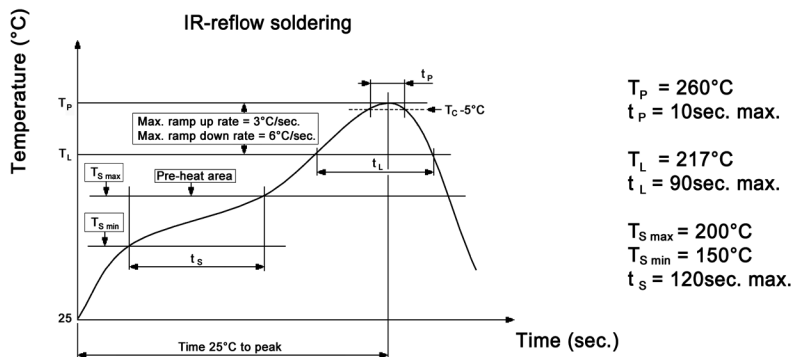


x	Height	Packaging unit	y	Operating force	Color of stem	Electrical life
1	4.3mm	1 800 pcs./reel	N	160 +/-50gf	brown	50 000 cycles
2	5.0mm	1 600 pcs./reel	R	260 +/-50gf	red	30 000 cycles
			S	320 +/-80gf	salmon	50 000 cycles
			Y	520 +/-130gf	yellow	30 000 cycles

Specifications:

Contact rating: 50mA, 12V DC
 Contact resistance: 100mOhm max.
 Insulation resistance: 100MOhm min. at 500V DC
 Dielectric strength: 250V, 50Hz for the duration of 1 minute
 Operating temperature: -40°C to +90°C
 Travel: 0.25mm +0.2/-0.1mm
 Mounting: on pc-board - SMD
 Material: Contacts: stainless steel, 0.5µm silver plated
 Terminals: brass, 1µm silver plated over 1µm nickel
 Cover: stainless steel
 Base / stem: high-temp. nylon meets UL94V-0 or PPA

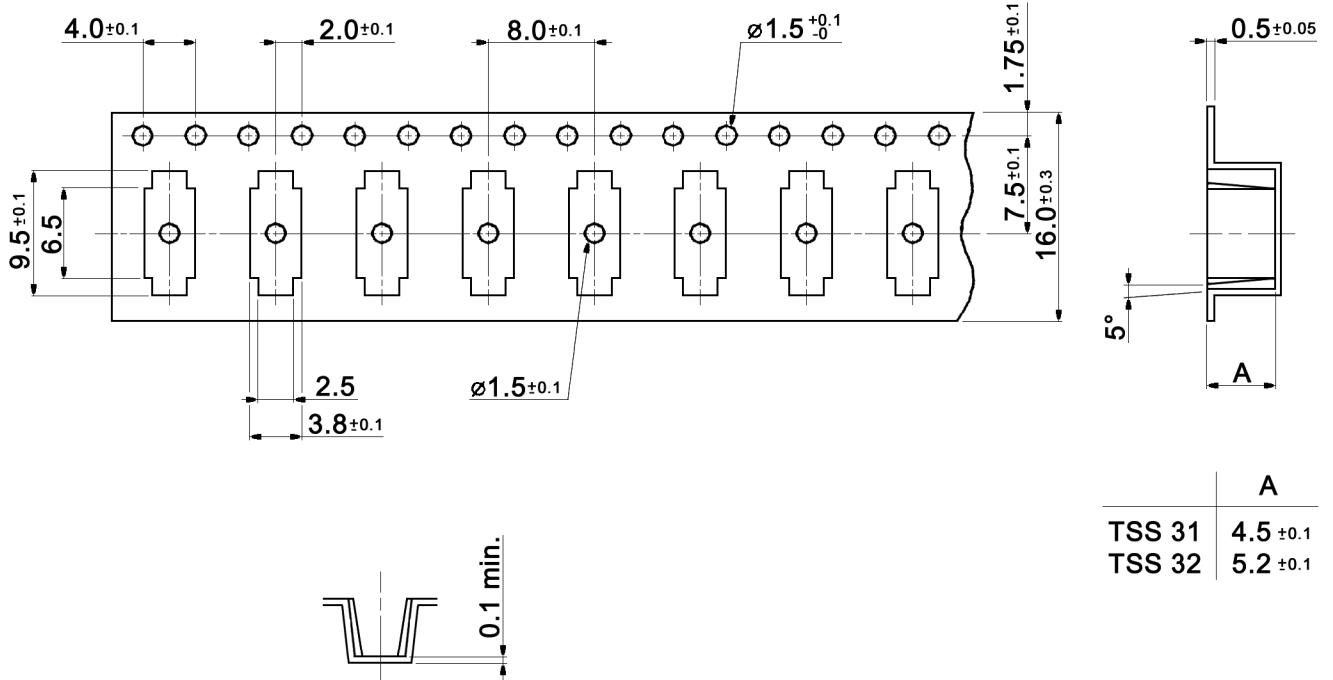
Soldering conditions:



Compliance: RohS III (2015/863/EU)

Tolerances:			Date	Name	TSS 3x y
			08/07	RMG	
Picking area	03/20	dr			
Plating	12/17	dr			
Operating temperature	07/17	dr			
Soldering conditions	10/15	dr			
Table "y"	09/11	dr	knitter-switch		30 06 17
Specifications	08/09	dr			
Modifications	Date	Name			Page 1/2

Packaging:



Compliance: RohS III (2015/863/EU)

Tolerances:			Date	Name	TSS 3x y
			08/07	RMG	
Picking area	03/20	dr			
Plating	12/17	dr			
Operating temperature	07/17	dr			
Soldering conditions	10/15	dr			
Table "y"	09/11	dr	knitter-switch		30 06 17
Specifications	08/09	dr			
Modifications	Date	Name			Page
					2/2

X-ON Electronics

Largest Supplier of Electrical and Electronic Components

Click to view similar products for [Switch Bezels / Switch Caps](#) category:

Click to view products by [Knitter-Switch](#) manufacturer:

Other Similar products are found below :

[896809000](#) [LW1A-B2-R](#) [LW2A-B1-G](#) [704.604.4](#) [704.955.3](#) [F1403](#) [7527](#) [760203000](#) [760503000](#) [766601000](#) [785105000](#) [785106000](#)
[79211759](#) [MH11](#) [MH13](#) [MHU31](#) [MJ1216](#) [MJ1226](#) [MJ33](#) [MJ612](#) [MJ626](#) [MJ627](#) [9001T8BK](#) [908-1634](#) [92-343.200](#) [92-343.400](#) [95804.920](#)
[95CAP-011](#) [95CAP-112](#) [11-932.7](#) [99-901.9](#) [99-909.4](#) [99-909.5](#) [99-920.8](#) [A0261A](#) [11-931.2](#) [11-932.5](#) [11-936](#) [11-937](#) [AKTSC22B](#) [AT496H](#)
[AW-RF8](#) [161006](#) [1825068-6](#) [184-1872](#) [187-1872](#) [188-1471](#) [18-920.1](#) [C1103](#) [1DFBLK](#)