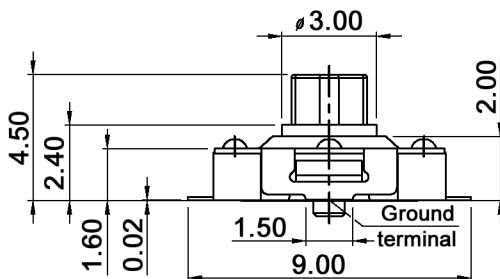
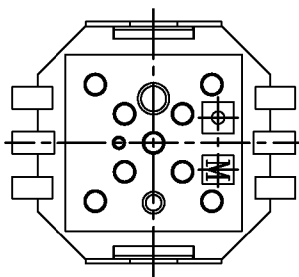
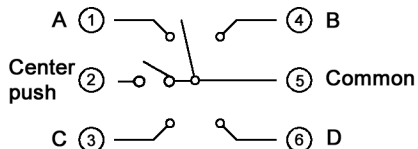
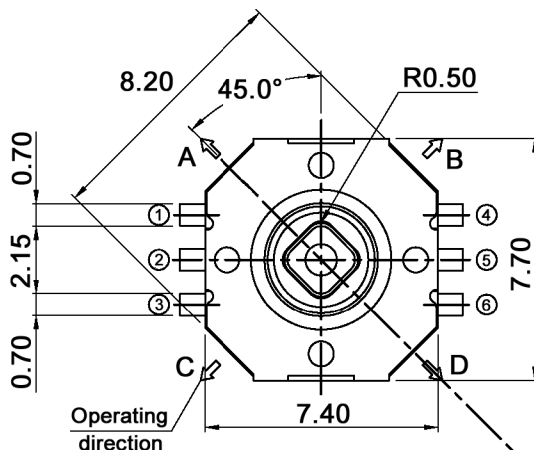
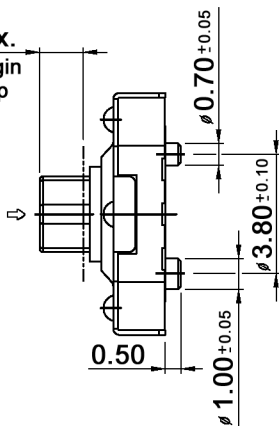


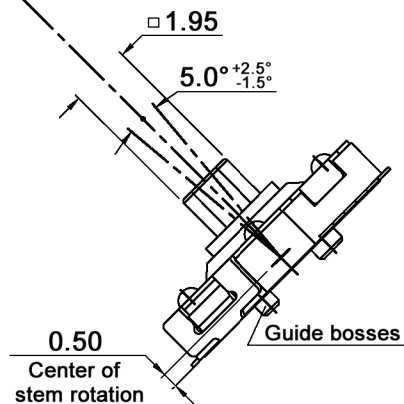
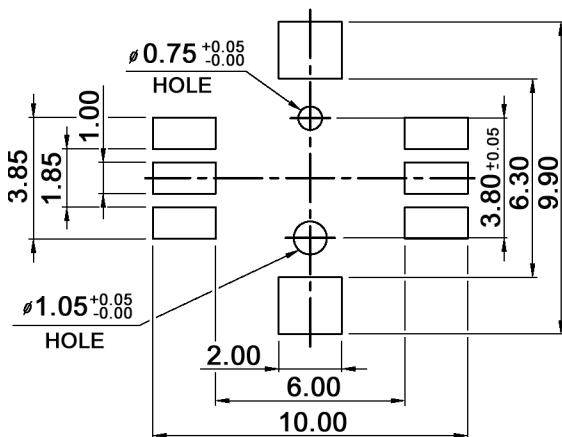
CIRCUIT DIAGRAM



1.40 max.  
Fitting margin  
for key top



P.C.B. LAYOUT



Tolerances: max. ±0.20mm			Date	Name
			09/05	dr
General tolerances	10/10	dr	<b>knitter-switch</b>	
Modifications	Date	Name		

**TSSJ 5**

**30 06 39**

Page  
1/2

**Specifications:**

Contact rating: 50mA, 12V DC  
 Contact resistance: 100mOhm max.  
 Insulation resistance: 100MOhm min.  
 Dielectric strength: 250V AC (50 or 60 Hz) for 1 minute  
 Operating temperature: -20°C to +70°C  
 Storage temperature: -40°C to +85°C  
 Operating force: center: 320 +/-50g; 4 directions: 160 +/-50g  
 Mechanical life: 100 000 cycles min.  
 Soldering temperature: peak 255°C / max. 10sec., >250°C  
 Travel: (center push) 0.25mm +0.1/-0.2mm  
 Material: Cover: C7701RH  
 Stem: high-temp. thermoplastic LCP  
 Contact: SUS301CSP-EH  
 Terminal: C5210R-H, silver plated  
 Base: high-temp. thermoplastic LCP, black



Tolerances: max. ±0.20mm		Date	Name	<h1>TSSJ 5</h1>
		09/05	dr	
		<b>knitter-switch</b>		<h1>30 06 39</h1>
				Page 2/2
Modifications	Date	Name		

## X-ON Electronics

Largest Supplier of Electrical and Electronic Components

*Click to view similar products for [Tactile Switches](#) category:*

*Click to view products by [Knitter-Switch](#) manufacturer:*

Other Similar products are found below :

[KMR633NG LFG](#) [5GTH92001](#) [5GTH9202242](#) [6426-201-11343](#) [MJ1226](#) [MJTP1109B](#) [MJTP1138EAUTR](#) [MJTP1230BL](#) [MJTPSHW](#)  
[GS6.90F300QP](#) [1-1977223-0](#) [1-1977120-4](#) [ADTSA62NV](#) [ADTSA62RV](#) [ADTSA63KV](#) [ADTSA644NV](#) [ADTSM24NVTR](#) [ADTSMW66NV](#)  
[ADTSMW67RV](#) [ATM533VTR](#) [1571300-3](#) [B3F-3123](#) [B3F-6055A](#) [B3F-B32-01-KIT](#) [1977177-8](#) [1977266-1](#) [2-1977223-4](#) [2-1977223-7](#)  
[ADTS644KV](#) [ADTSA61RV](#) [ADTSA62KV](#) [ADTSA63NV](#) [ADTSA63RV](#) [ADTSA65NV](#) [ADTSM21NSVTR](#) [ADTSM25RVTR](#)  
[ADTSM31RVTR](#) [ADTSM32NVTR](#) [ADTSM61YVTR](#) [ADTSM63SVTR](#) [ADTSM644KVTR](#) [ADTSMW64RV](#) [ADTSMW69NV](#)  
[FSMRA4JHA04](#) [GS4.70F300QP](#) [D38999/20JJ37SA](#) [TL1105B](#) [TL1105J](#) [ATH447K2Q](#) [ATM534VTR](#)