

JMC P/N	CAPACITANCE	Q @ 100 MHz	COLOR CODE
2320-0SL	0.6 TO 2.5 pF	> 3000	RED
2320-1SL	1.0 TO 5.0 pF	> 1000	BLACK
2320-2SL	2.5 TO 10 pF	> 1000	BLUE
2320-3SL	5.0 TO 18 pF	> 500	GREEN
2320-4SL	6.5 TO 25 pF	> 300	AMBER

MI DRG. NO.

2320SLK

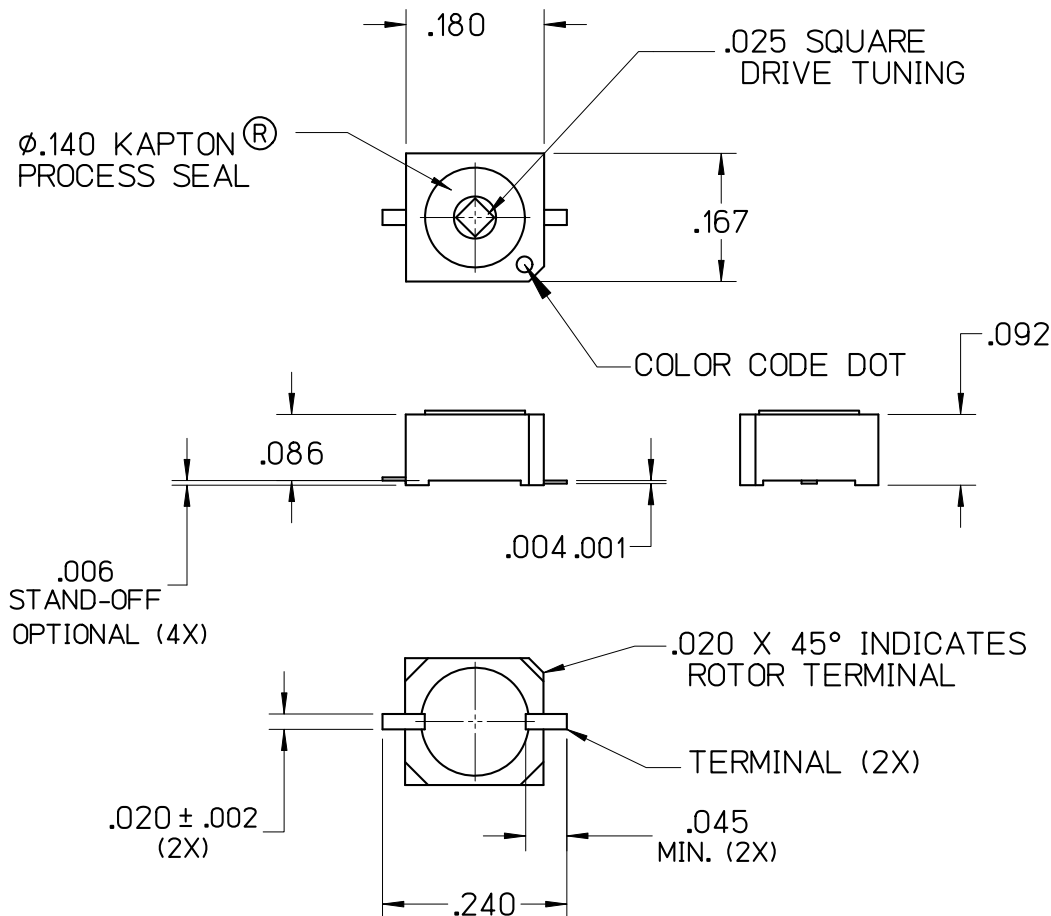
REV.

2320SL K**CERA-TRIM[®] CAPACITOR**

SPECIFICATIONS

FILE: THINOUT

CAPACITY RANGE	SEE TABLE
WORKING VOLTAGE	250 VDC (TEST VOLTAGE 500 VDC)
Q @ 100 MHz	SEE TABLE
INSULATION RESISTANCE	> 10 ⁴ MEGOHMS
TEMPERATURE RANGE	-55°C TO +125°C
TORQUE	0.05 TO 1.0 OZ. IN.
MOISTURE RESISTANCE	MIL-STD-202, METHOD 106
SHOCK	100 g @ 6 ms
VIBRATION	15 g @ 10-2000 Hz
SETTING DRIFT	< 1%
CERAMIC DIELECTRIC STRUCTURE	
SOLDER FINISH TERMINALS	



K	01/13/14	SSH	MAI	MAI	001202
J	10/08/10	NK	MAI	MAI	000870
H	01/02/07	MLD	MAI	MAI	000479
G	05/19/06	MLD	MAI	MAI	000398
F	10/09/02	MLD	MAI	TAM	020-089
E	09/30/02	MLD	TAM	TAM	020-085
D	03/16/00	-	-	-	000-108
LEVEL	DATE	DRN.	CHK.	APP.	ECN

REVISIONS

DRN.	CHK.	APP.	SCALE
TAM	TAM	JHT	4" = 1"
DATE	DATE	DATE	.XX \pm .015
03/16/00	03/16/00	03/16/00	.XXX \pm .005



JOHANSON MANUFACTURING CORPORATION
 ROCKAWAY VALLEY ROAD, BOONTON, N.J. 07005 (973)334-2676 FAX (973)334-2954
 ELECTRONIC ACCURACY THROUGH MECHANICAL PRECISION

PROPRIETARY INFORMATION CONTAINED NOT TO BE USED WITHOUT JOHANSON MANUFACTURING CORPORATION APPROVAL

X-ON Electronics

Largest Supplier of Electrical and Electronic Components

Click to view similar products for [Trimmer/Variable Capacitors](#) category:

Click to view products by [Knowles](#) manufacturer:

Other Similar products are found below :

[GKY20086](#) [GNC8R050](#) [GXC90000](#) [PC51H230](#) [STPTIC-56G2C5](#) [27271LSL](#) [27281SL](#) [27283-3R10](#) [GYB5R000](#) [GHC5R500](#) [GZD80000](#)
[NMAM25HV](#) [NMA1J12HVS](#) [SR600TR](#) [SR101TR](#) [SR201TR](#) [SR301TR](#) [NMA1J4HV](#) [NMA1J8HV](#) [NMTM120C](#) [NMTM120CE](#) [V2890](#)
[V2753](#) [NMKT10HVE](#) [NMAP40HV](#) [V8081](#) [V2369](#) [NMCB10-5CKE](#) [NMAT25HVFS](#) [6924-12](#) [6926-17](#) [6940-1](#) [6926-0](#) [L6997-5](#) [9401-](#)
[0SL-1](#) [GYC15000](#) [CV31A180](#) [BFC280905215](#) [TZB4Z030AA10R00](#) [BFC280800006](#) [BFC280905216](#) [STPTIC-47F1M6](#) [STPTIC-27F1M6](#)
[GYA5R000](#) [JZ030HV](#) [JZ300HV](#) [JZ060HV](#) [CTZ3E-10A-W5-PF](#) [189-0504-005](#) [538-011 D 9-35LF](#)