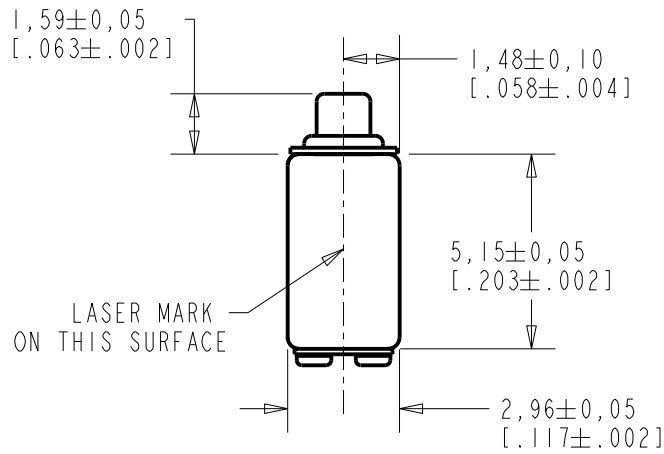
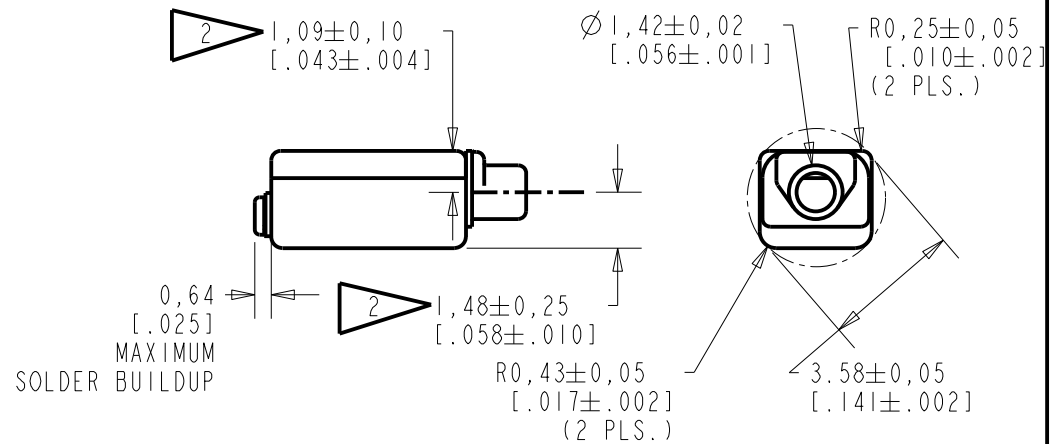
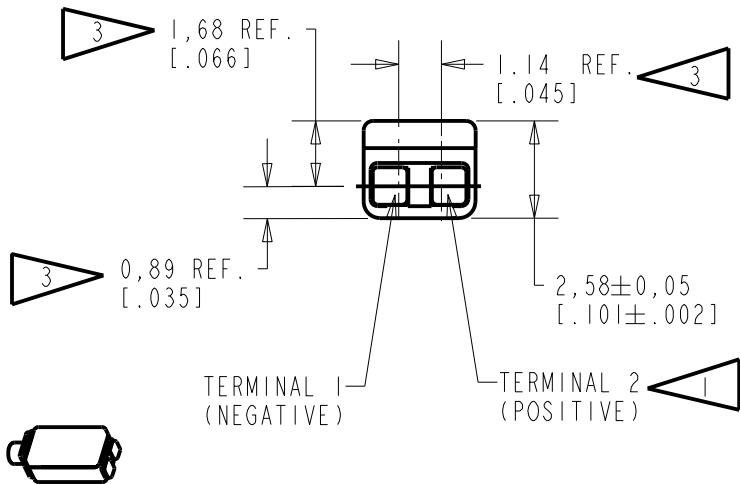


RAB-32057-000

SHT 1.1



- NOTE:
- 1 A POSITIVE GOING VOLTAGE AT TERMINAL 2, RELATIVE TO TERMINAL 1, CAUSES A DECREASE IN PRESSURE AT THE SOUND OUTLET.
 - 2 LOCATED FROM TWO SURFACES FOR CUSTOMER CONVENIENCE. ONLY APPLICABLE FROM ONE SURFACE, NOT TO BE USED TOGETHER.
 - 3 DIMENSION TO APPROXIMATE CENTER OF TERMINAL PAD.



SCALE 2:1

NOMINAL WEIGHT .16 GRAMS DIMENSIONS IN MILLIMETERS [INCHES]

KNOWLES ELECTRONICS
ITASCA, ILLINOIS U.S.A.

Revision	C.O. #	Implementation Date	RELEASE LEVEL	REVISION
B	CI0116714	3-26-15	Active	B
A	CI0115003	8-8-13		

SCALE: 5:1		DR. BY: JL	DATE: 9-23-14
DO NOT SCALE DRAWING			
TITLE: RECEIVER		RAB-32057-000	
OUTLINE DRAWING		SHT 1.1	
		CK. BY: GJP	DATE: 9-24-14
		APP. BY: GJP	DATE: 9-24-14

SENSITIVITY
 DEVICE WILL PRODUCE THE SPL LISTED BELOW WITH THE TEST
 CONDITIONS DESCRIBED IN TABLE 3. NOMINAL SENSITIVITY
 AT 1 kHz IS dB RELATIVE TO 20μPa. ALL OTHER VALUES IN
 dB RELATIVE TO THE SENSITIVITY AT 1 kHz.

LIMIT TYPE	FREQUENCY (Hz)	MINIMUM	NOMINAL	MAXIMUM
REL	200	+1.0	+4.0	+7.0
REL	500	-0.5	+2.0	+5.5
REF	1000	-2.0	101.5	+2.0
PEAK 1	2450-3050	+3.0	+4.5	+9.0
VALLEY	4200-5200	-10.0	---	---
PEAK 2	5100-6100	-8.0	-5.0	-2.0

TABLE 1.

TOTAL HARMONIC DISTORTION
 DEVICE WILL NOT EXCEED TOTAL HARMONIC DISTORTION LEVELS
 LISTED BELOW.

FREQUENCY (Hz)	DRIVE (Vrms)	LIMIT (%)
1/3 PEAK1 (TYP. 917)	0.180	3
1/2 PEAK1 (TYP. 1375)	0.180	3
1/3 PEAK1 (TYP. 917)	0.507	8
1/2 PEAK1 (TYP. 1375)	0.507	8

TABLE 2.

TEST CONDITIONS

NOMINAL SOURCE VOLTAGE	0.180 Vrms
SOURCE IMPEDANCE	< 1 Ω
TUBING	10 mm (.394) LONG, 1 mm (.039) ID.
COUPLER CAVITY	2 CC SIMULATED ANSI S3.7 TYPE HA-3, (IEC 60318-5)

TABLE 3.

DC RESISTANCE	65 Ω ±10%
IMPEDANCE @ 500 Hz	90 Ω ±15%
IMPEDANCE @ 1 kHz	140 Ω ±15%
INDUCTANCE @ 500 Hz	19.8 mH TYPICAL

TABLE 4.

ISOLATION: THE CASE WILL BE ELECTRICALLY ISOLATED
 FROM THE COIL CIRCUIT

MECHANICAL

PORT LOCATION: 12S

SOLDER TYPE: ROHS COMPLIANT
 SAC305

TEMPERATURE

OPERATING: SENSITIVITY WILL NOT VARY MORE THAN
 +1/-3 dB FROM 0°C TO 63°C

STORAGE: -40°C TO 63°C

Revision	C.O. #	Implementation Date	RELEASE LEVEL	REVISION
B	CI0116714	3-26-15	Active	B
A	CI0115003	8-8-13		

KNOWLES ELECTRONICS
 ITASCA, ILLINOIS U.S.A.

WHEN TEST LIMITS ARE USED TO ESTABLISH INCOMING INSPECTION ACCEPTANCE/REJECTION
 CRITERIA, CORRELATION OF TEST EQUIPMENT WITH KNOWLES IS ALSO REQUIRED FOR
 ELIMINATION OF EQUIPMENT AND TEST METHOD VARIATION

DR. BY DATE
 JL 9-23-14

CK. BY DATE
 GJP 9-24-14

TITLE:
RECEIVER
 PERFORMANCE SPECIFICATION

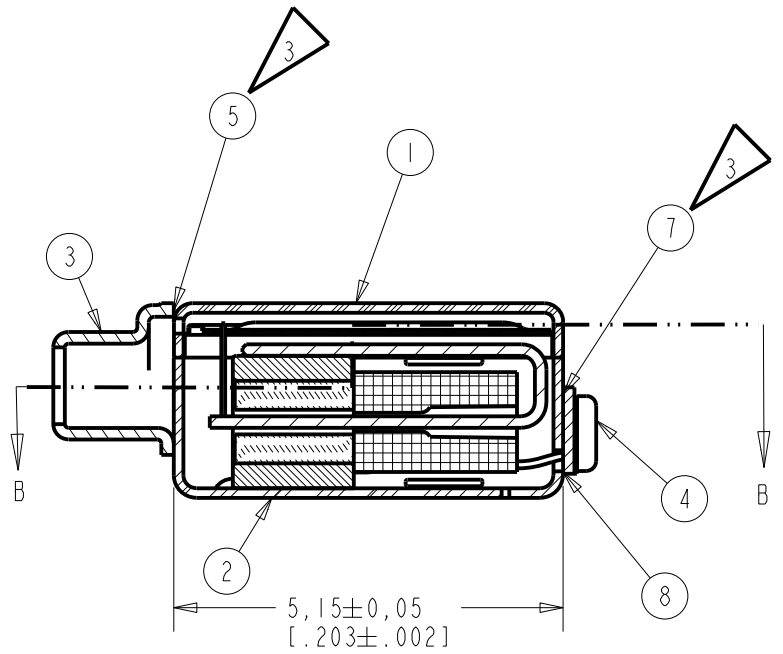
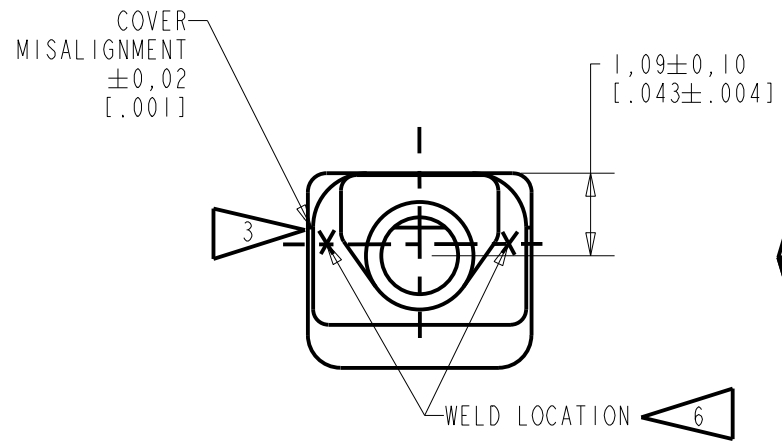
RAB-32057-000
 SHT 2.1

APP. BY DATE
 GJP 9-24-14

PROPRIETARY NOTE: THIS DOCUMENT CONTAINS INFORMATION WHICH IS THE PROPRIETARY PROPERTY OF KNOWLES ELECTRONICS, LLC. OR ITS AFFILIATED ENTITIES. IT IS ISSUED IN STRICT CONFIDENCE AND SHALL NOT BE REPRODUCED, COPIED, USED, OR DISCLOSED TO ANY THIRD PARTY PARTIALLY OR WHOLLY IN ANY MANNER WITHOUT PRIOR WRITTEN PERMISSION OF, AND MUST BE RETURNED UPON REQUEST BY, KNOWLES ELECTRONICS, LLC.

1,59±0,05
[.063±.002]

SECTION B-B



SECTION A-A

DIMENSIO

- NOTES:
1. ITEMS NUMBERS (SHOWN THUS) ON DRAWING CORRESPOND WITH ITEM NUMBERS ON BILL OF MATERIAL.
 - 2 ORIENTATION OF COMPASS NEEDLE IN THE MAGNETIZING FIELD.
 - 3 AIRTIGHT SEAL ALL AROUND.
 4. UNITS SHALL BE FREE OF VISUAL DEFECTS SUCH AS SCRATCHES, ABRASION, SLUG MARKS, OIL, DIRT, OTHER CONTAMINATIONS, ETC., NOTICABLE WITH THE UNAIDED EYE,
 5. NO CEMENT ON SOLDER PADS.
 - 6 MIN. TUBE WELD STRENGTH OF 4.9N WITH FORCE APPLIED IN DIRECTION SHOWN.
 7. NO THRU HOLES OR WELD FLASH AT COVER WELD.

MATERIAL		SEE BILL OF MATERIAL	
REF.	XD-xxxx		
A	c.o. C10116251		
B	c.o. C10116714		
UPDATE A DIMENSION.			
JL 4-21-15			
UNLESS OTHERWISE SPECIFIED, DIMENSIONS ARE IN INCHES			
THIRD ANGLE PROJECTION			

C
B
A

8 7 6 5 4

B	RAB-1030-004	I	MOTOR & CUP ASSEMBLY	2	2
	FC-006	I	TUBE	3	3
	285-007-001	A/R	SOLDER	4	4
	13-825-3145	A/R	CEMENT	5	5
	13-825-3153	A/R	CEMENT	6	6
	13-825-3160	A/R	CEMENT	7	7
B	113-113	I	TAB	8	8

REVISION

A	c.o. C10116251
B	c.o. C10116714

RAB-1030-004 WAS
RAB-1004-004;
113-113 WAS 113-083.
JL
4-21-15

RAB-32057-000
Sheet 4.1

PROPRIETARY NOTE: THIS DOCUMENT CONTAINS INFORMATION WHICH IS THE PROPRIETARY PROPERTY OF KNOWLES ELECTRONICS, LLC. OR ITS AFFILIATED ENTITIES. IT IS ISSUED IN STRICT CONFIDENCE AND SHALL NOT BE REPRODUCED, COPIED, USED, OR DISCLOSED TO ANY THIRD PARTY PARTIALLY OR WHOLLY IN ANY MANNER WITHOUT PRIOR WRITTEN PERMISSION OF, AND MUST BE RETURNED UPON REQUEST BY, KNOWLES ELECTRONICS, LLC.

REV: D
RET: BDC/PRT/IND/FRM

KNOWLES ELECTRONICS
ITASCA, ILLINOIS U.S.A.

Revision	C.O. #	Implementation Date	RELEASE LEVEL	REVISION
B	C10116714	3-26-15	Active	B
A	C10115003	8-8-13		
<small>WHEN TEST LIMITS ARE USED TO ESTABLISH INCOMING INSPECTION ACCEPTANCE/REJECTION CRITERIA, CORRELATION OF TEST EQUIPMENT WITH KNOWLES IS ALSO REQUIRED FOR ELIMINATION OF EQUIPMENT AND TEST METHOD VARIATION</small>				<small>DR. BY</small> JL <small>DATE</small> 9-23-14
<small>TITLE:</small> RECEIVER			<small>CK. BY</small> GJP <small>DATE</small> 9-24-14	
PERFORMANCE SPECIFICATION			RAB-32057-000	<small>APP. BY</small> GJP <small>DATE</small> 9-24-14
			SHT 5.1	

X-ON Electronics

Largest Supplier of Electrical and Electronic Components

Click to view similar products for [Speakers & Transducers](#) category:

Click to view products by [Knowles](#) manufacturer:

Other Similar products are found below :

[FC-30814-P127](#) [PB-1220PE](#) [PB-2015PQ](#) [900-00001](#) [AB2025B-LW50-R](#) [SWFK-31736-000](#) [PT-2065FW](#) [PT-4175W](#) [AT-2830-TW-LW35-R](#)
[ED-30761-000](#) [CI-30120-A42](#) [SMT-0440-T-2-R](#) [PB-0927PQ](#) [BF-7083-000](#) [BF-9778-000](#) [SMS2020-08H4.5](#) [LF](#) [BDT1717-08H6.5W56MLF](#)
[BLS50-1-08H18.2B-03](#) [LF](#) [02094](#) [02097](#) [GSPK1003PN-8R0.2W-L100](#) [GSPK151103TN-8R0.2W](#) [GSPK2014035PN-8R0.5W-L100](#)
[FS5353DS0830-H19.3](#) [TE082703-8](#) [XMLP040BD21F](#) [24520](#) [SMT-0540-S-2-R](#) [1450069](#) [9091653](#) [9091661](#) [IPS-G6000-5](#) [9090231](#)
[FS50MS0820-H9.7](#) [FS4014-4-2W](#) [PBM4-13.B29R.A115.0663](#) [PBM4-13.B31R.A115.0663](#) [PBM4-13.B33R.A115.0663](#) [PBM4-](#)
[13.B35R.A115.0663](#) [A-10-6-BG360-HD1Z-GA-M4Z-ZW](#) [A-10-6-BG410-HD1Z-AA-M4Z-ZW](#) [A-10-6-BG410-HD1Z-FC-AGZ-ZW](#) [A-10-6-](#)
[BG410-HD1Z-GA-M4Z-ZW](#) [A-10-6-BG310-HD1Z-AA-AGZ-ZW](#) [A-10-6-BG310-HD1Z-AA-M4Z-ZW](#) [A-10-6-BG310-HD1Z-GA-M4Z-ZW](#)
[A-10-6-BG316-HD1Z-AA-AGZ-ZW](#) [A-10-6-BG316-HD1Z-AA-M4Z-ZW](#) [A-10-6-BG325-HD1Z-AA-AGZ-ZW](#) [A-10-6-BG325-HD1Z-AA-](#)
[M4Z-ZW](#)