

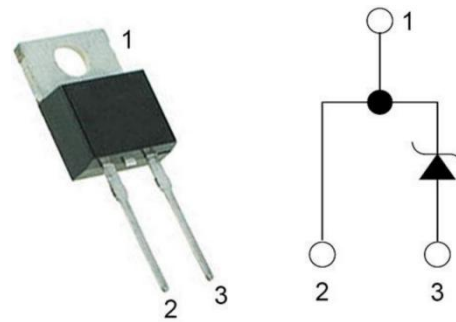
Silicon Carbide Schottky Diode 650V, 20A, 44nC

General Description

This product family offers state of the art performance. It is designed for high frequency applications where high efficiency and high reliability are required.

Features

- Zero Forward/Reverse Recovery Current
- High Blocking Voltage
- High Frequency Operation
- Positive Temperature Coefficient on VF
- Temperature Independent Switching Behavior



TO-220-2

Applications

- Motor Drives
- Solar Inverters
- AC/DC converters
- DC/DC converters
- Uninterruptable power supplies

Benefits

- Higher System Efficiency
- Parallel Device Convenience without thermal runaway
- Higher Temperature Application
- No Switching loss
- Hard Switching & Higher Reliability
- Environmental Protection

Key performance parameters

Type	V_R	I_F $T_C=148^\circ\text{C}$	Q_c
KN3D20065A	650V	20A	44nC

Caution: This device is sensitive to electrostatic discharge .Users should follow ESD handling procedures.

Maximum Ratings

$T_C=25^{\circ}\text{C}$, unless otherwise specified

Parameter	Symbol	Value	Unit
Peak Repetitive Reverse Voltage	V_{RRM}	650	V
Peak Reverse Surge Voltage	V_{RSM}	650	V
DC Blocking Voltage	V_R	650	V

Maximum Ratings

$T_C=25^{\circ}\text{C}$, unless otherwise specified

Parameter	Symbol	Value	Unit
Continuous Forward Current: $T_C = 25^{\circ}\text{C}$ $T_C = 135^{\circ}\text{C}$ $T_C = 148^{\circ}\text{C}$	I_F	58 25 20	A
Non Repetitive Forward Surge Current: $T_C = 25^{\circ}\text{C}$, $t_p = 10\text{ms}$, Half Sine Pulse $T_C = 110^{\circ}\text{C}$, $t_p = 10\text{ms}$, Half Sine Pulse	I_{FSM}	120 110	A
Repetitive peak Forward Surge Current: Freq = 0.1Hz, 100 cycles $T_C = 25^{\circ}\text{C}$, $t_p = 10\text{ms}$, Half Sine Pulse $T_C = 110^{\circ}\text{C}$, $t_p = 10\text{ms}$, Half Sine Pulse	I_{FRM}	110 100	A
Total power dissipation : $T_C = 25^{\circ}\text{C}$	P_D	176	W
Operating Junction Temperature :	T_J	-55 to 175	$^{\circ}\text{C}$
Storage Temperature :	T_{STG}	-55 to 175	$^{\circ}\text{C}$

Caution: This device is sensitive to electrostatic discharge .Users should follow ESD handling procedures.

Thermal Resistance

Parameter	Symbol	Typ.	Max	Unit
Thermal resistance, junction-case	R_{thJC}	0.85		$^{\circ}\text{C}/\text{W}$

Electrical Characteristic

$T_C = 25^{\circ}\text{C}$, unless otherwise specified

Parameter	Symbol	Value			Unit	Test Condition
		Min.	Typ.	Max.		
DC Blocking Voltage	V_{DC}	650			V	$I_R = 250\mu\text{A}$ $T_J = 25^{\circ}\text{C}$
Forward Voltage	V_F		1.50 1.60 1.70	1.80	V	$I_F = 20\text{A}$ $T_J = 25^{\circ}\text{C}$ $T_J = 125^{\circ}\text{C}$ $T_J = 175^{\circ}\text{C}$
Reverse Current	I_R		20 120 250	80	μA	$V_R = 650\text{V}$ $T_J = 25^{\circ}\text{C}$ $T_J = 125^{\circ}\text{C}$ $T_J = 175^{\circ}\text{C}$
Total Capacitance Charge	Q_C		44		nC	$V_R = 400\text{V}$ $T_J = 25^{\circ}\text{C}$
Total Capacitance	C		770 90 64		pF	$T_J = 25^{\circ}\text{C}$, Freq = 1MHz $V_R = 1\text{V}$ $V_R = 200\text{V}$ $V_R = 400\text{V}$

Caution: This device is sensitive to electrostatic discharge .Users should follow ESD handling procedures.

Characteristics Curves

Figure 1. Forward Characteristics

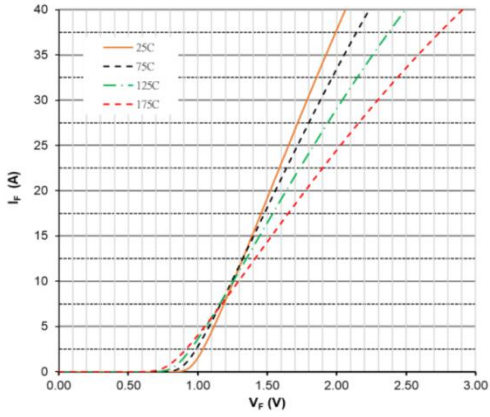


Figure 2. Forward Characteristics

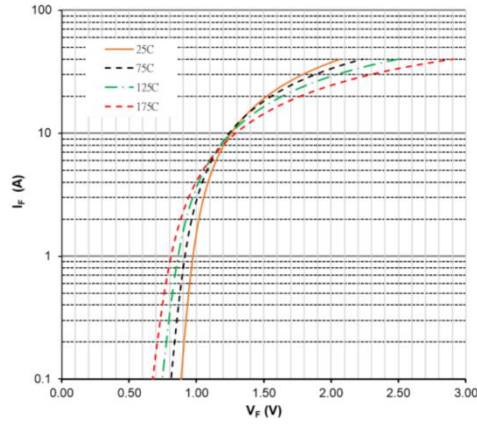


Figure 3. Reverse Characteristics

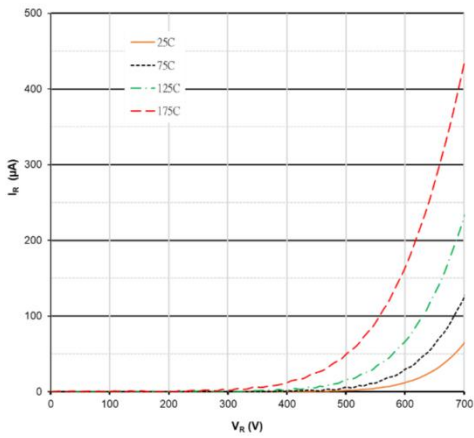


Figure 4. Power Derating

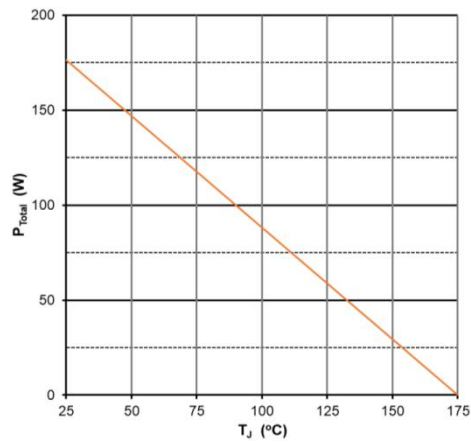


Figure 5. Capacitance vs Reverse Voltage

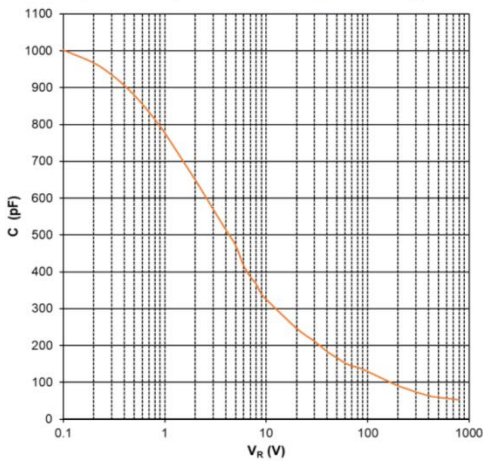
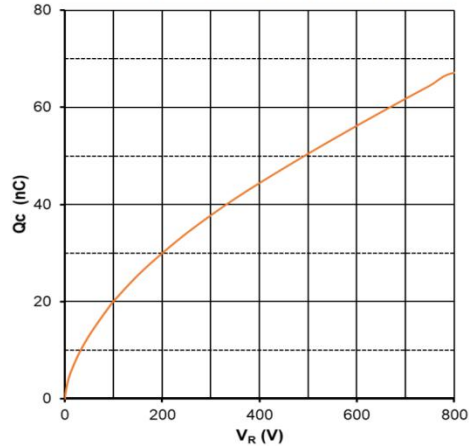
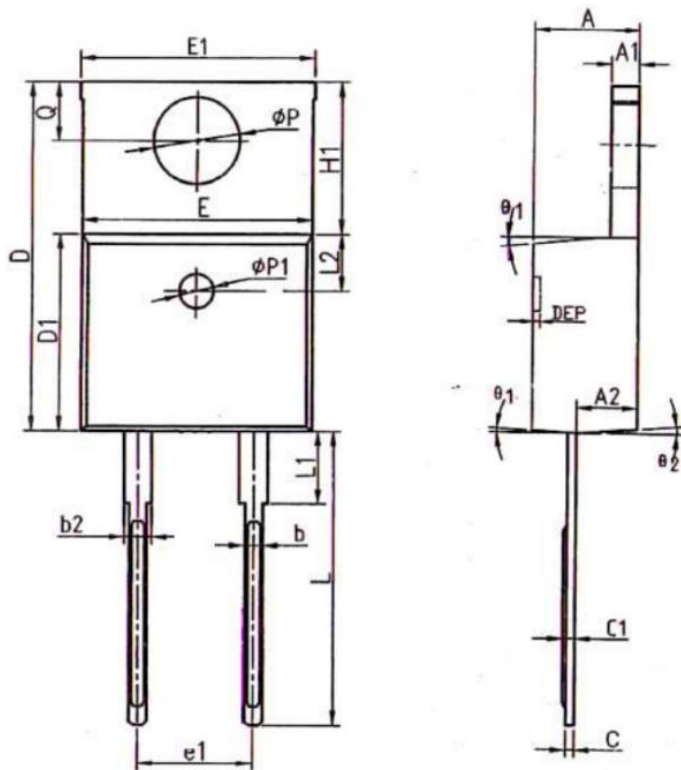


Figure 6. Recovery Charge vs Reverse Voltage



Caution: This device is sensitive to electrostatic discharge .Users should follow ESD handling procedures.

Package Outline: TO-220-2



COMMON DIMENSIONS

SYMBOL	MM			INCH		
	MIN	NOM	MAX	MIN	NOM	MAX
A	4.40	4.57	4.70	0.173	0.180	0.185
A1	1.22	1.27	1.32	0.048	0.050	0.052
A2	2.59	2.69	2.79	0.102	0.106	0.110
b	0.77	0.813	0.90	0.030	0.032	0.035
b2	1.20	1.27	1.36	0.047	0.050	0.054
c	0.34	0.381	0.47	0.013	0.015	0.019
c1	0.40	0.559	0.60	0.016	0.022	0.024
D	14.70	15.00	15.30	0.579	0.591	0.602
D1	8.60	8.70	8.80	0.339	0.343	0.346
E	10.06	10.16	10.26	0.396	0.400	0.404
E1	10.10	10.25	10.35	0.398	0.404	0.407
E2	10.00	10.10	10.20	0.394	0.398	0.402
e	2.54 BSC			0.100 BSC		
e1	5.08 BSC			0.200 BSC		
H1	6.10	6.30	6.50	0.240	0.248	0.256
L	13.20	13.40	13.50	0.520	0.528	0.531
L1	-	3.75	4.00	-	0.148	0.157
L2	2.50 REF			0.098 REF		
ϕP	3.76	3.84	3.88	0.148	0.151	0.153
Q	2.60	2.743	2.90	0.102	0.108	0.114
θ1	5°	7°	9°	5°	7°	9°
θ2	1°	3°	5°	1°	3°	5°
ϕP1	1.40	1.50	1.60	0.055	0.059	0.063
DEP	0.05	0.10	0.20	0.002	0.004	0.008

Part Number	Package	Packing	Marking	M.O.Q
KN3D20065A	TO-220-2	50pcs / Tube	KN3D20065A	500

Caution: This device is sensitive to electrostatic discharge .Users should follow ESD handling procedures.

X-ON Electronics

Largest Supplier of Electrical and Electronic Components

Click to view similar products for [Schottky Diodes & Rectifiers](#) category:

Click to view products by [KNSCHA](#) manufacturer:

Other Similar products are found below :

[MA4E2039](#) [MMBD301M3T5G](#) [RB160M-50TR](#) [D83C](#) [BAS16E6433HTMA1](#) [BAS 3010S-02LRH E6327](#) [BAT 54-02LRH E6327](#)
[NRVBAF360T3G](#) [NSR05F40QNXT5G](#) [NTE555](#) [JANS1N6640](#) [SS3003CH-TL-E](#) [GA01SHT18](#) [CRS10I30A\(TE85L,QM](#) [MBRA140TRPBF](#)
[MBRB30H30CT-1G](#) [BAT 15-04R E6152](#) [JANTX1N5712-1](#) [DMJ3940-000](#) [SB007-03C-TB-E](#) [NRVBB20100CTT4G](#) [NRVBM120LT1G](#)
[NTSB30U100CT-1G](#) [CRG04\(T5L,TEMQ\)](#) [ACDBA1100LR-HF](#) [ACDBA1200-HF](#) [ACDBA240-HF](#) [ACDBA3100-HF](#) [CDBQC0530L-HF](#)
[ACDBA260LR-HF](#) [ACDBA1100-HF](#) [10BQ015-M3/5BT](#) [NRVBM120ET1G](#) [VSSB410S-M3/5BT](#) [1N5819T-G](#) [PDS1040Q-13](#) [B160BQ-13-F](#)
[SDM05U20CSP-7](#) [BAS 70-07 E6433](#) [B140S1F-7](#) [HSM560Je3/TR13](#) [DDB2265-000](#) [ZHCS506QTA](#) [HSM190Je3/TR13](#) [B330AF-13](#)
[ACDBUC0230-HF](#) [SDM1U100S1F-7](#) [MBR10200CTF-G1](#) [CDLL5712](#) [DMF2822-000](#)