

SIC502D

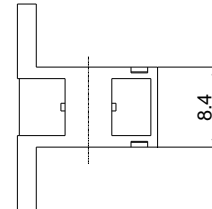
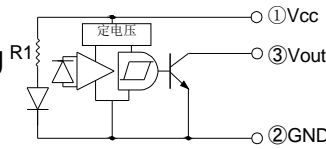
Photo Interrupter

Dimensions

(unit: mm)

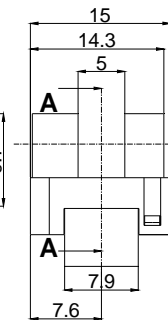
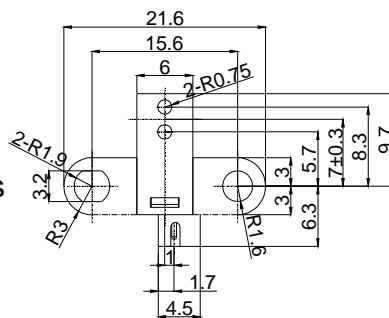
SIC502D is Transmission type photointerrupter combined high power GaAs IRED with Photo-IC. Being suitable for highly accurate position detecting, it is great help in developing an object detecting system of high performance and high reliability.

内部回路图

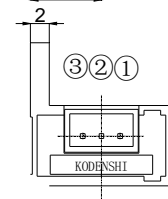
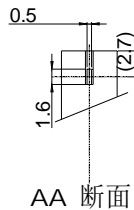
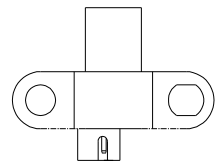


Features

- Supply voltage 5V
- GAP:5.0mm
- With the installation positioning boss
- RoHS Compliance



Optical center



General Tolerance (±0.2)

Applications

- Copiers, Printers, ATM
- Amusement machines
- Exchanging machines
- Ticket vending machines

Maximum Ratings

(Ta=25°C)

Item	Symbol	Ratings	Unit
Supply voltage	V _{CC}	-0.5~+7	V
Output voltage	V _O	7	V
Low level output current	I _{OL}	16	mA
Power dissipation	P _D	100	mW
Operating temperature *1*2	T _{opr}	-20~+75	°C
Storage temperature *1*2	T _{stg}	-30~+85	°C

*1. No icebond or dew

*2. The soldering should be 1.2mm away from bottom of the holder t=within 3s

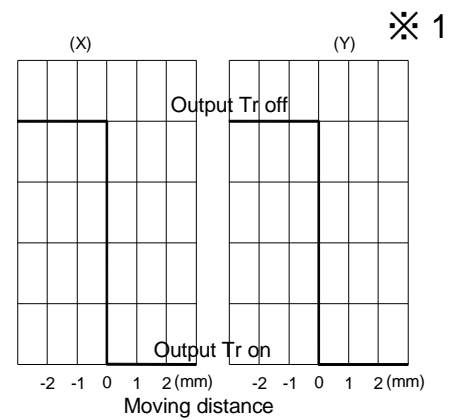
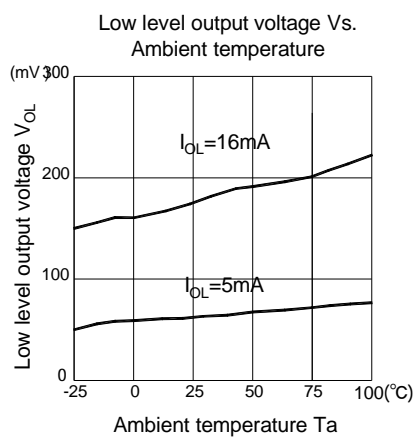
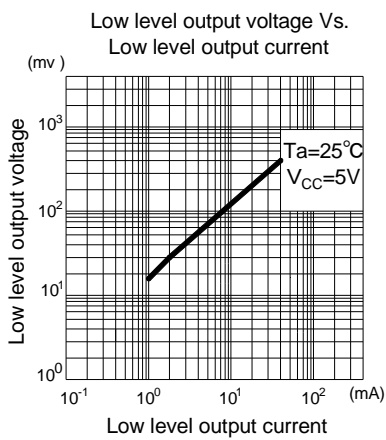
Photo Interrupter

SIC502D

Electro-Optical Characteristics

(Ta=25°C)

Item	Symbol	Conditions	Min	Typ	Max	Unit
Operating supply voltage	V_{CC}	-	4.5	-	5.5	V
Low level output voltage	V_{OL}	$V_{CC}=5V, I_{OL}=16mA, (Shading)$	-	0.2	0.4	V
High level output voltage	V_{OH}	$V_{CC}=5V, R_L=10K\Omega, (Non-shading)$	4.5	-	-	V
Low level supply current	I_{CCL}	$V_{CC}=5V, (Shading)$	-	19	35	mA
High level supply current	I_{CCH}	$V_{CC}=5V, (Non-shading)$	-	19	35	mA
Frequency	f	$V_{CC}=5V, R_L=10K\Omega$	3000	-	-	Hz



Method of measure position detection characteristic

※ 1

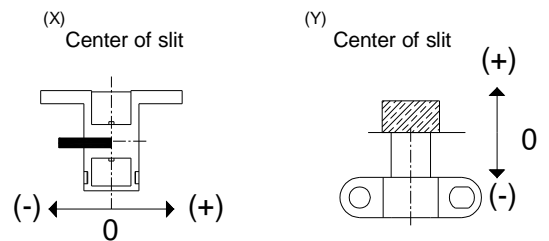
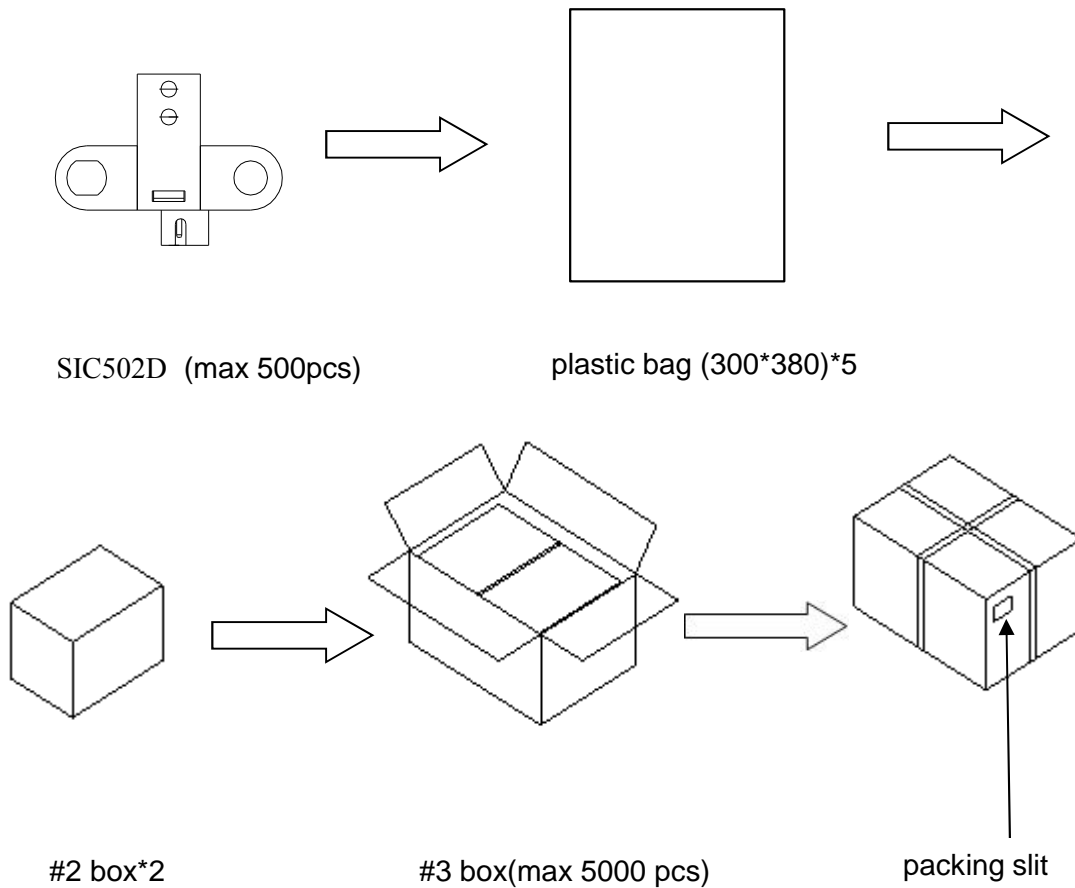


Photo Interrupter

SIC502D

Packing Specification

- 1.Fixed quantity (max 500pcs) of the products are packed into plastic bag(300*380)
- 2.Five bags of the products are put into #2 box
3. Two #2 boxes are put into #3 box(max 5000pcs)
4. Packing slit is pasted on #3 box.



X-ON Electronics

Largest Supplier of Electrical and Electronic Components

Click to view similar products for [Optical Switches, Transmissive, Phototransistor Output](#) *category:*

Click to view products by [Kodenshi](#) *manufacturer:*

Other Similar products are found below :

[LTH-301-07](#) [LTH-301-23](#) [LTH-306-02](#) [LTH-306-64](#) [E3C-X2C](#) [E3S-LS20B4S1](#) [E3SX2CE4](#) [EESPW301](#) [EE-SX872R](#) [EE-SX950P-W 1M](#)
[EE-SX952-R 3M](#) [RPI-0125B](#) [RPI-2501](#) [RPI-576A](#) [KRA021](#) [LTH-306-04M](#) [HOA0865-100](#) [HOA1961-055](#) [RPI-124](#) [E3F-3C4](#) [EE-SPX305-](#)
[W2A 2M](#) [EE-SX953-W 3M](#) [EE-SX972P-C1](#) [LTH-306-01](#) [EE-SX670B](#) [EE-SX771R 5M](#) [RPI-574](#) [ZGY1602\(ITR\)](#) [EESX677C1JR01M](#)
[EESX971PC1](#) [HOA1883-501](#) [EE-SX970P-C1](#) [EE-SX976-C1](#) [RPI-125](#) [RPI-243](#) [EE-SX1061](#) [EE-SX153](#) [EE-SX675P-WR 1M](#) [EE-SX971-C1](#)
[OPB853A3](#) [GP1S396HCP0F](#) [EE-SX1128](#) [OPB857Z](#) [EE-SV3-B](#) [EE-SJ3-D](#) [RPI-0226](#) [ITR8307](#) [EE-SX671P-WR 1M](#) [EE-SX675P](#) [EE-](#)
[SX951P-W 1M](#)