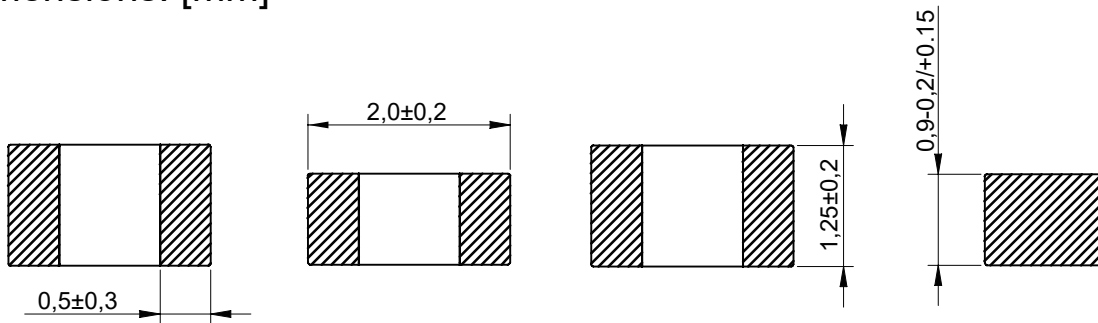
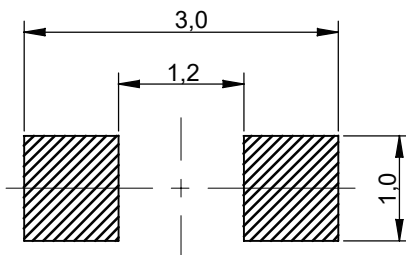


Dimensions: [mm]



Recommended Land Pattern: [mm]




Electrical Properties:

Properties	Z (Ω)	I _R (mA)	R _{DC} (Ω)
Value	600	200	0.65
Tolerance	±25%	max.	max.
Test Condition	100MHz/500mV	ΔT=40°C	

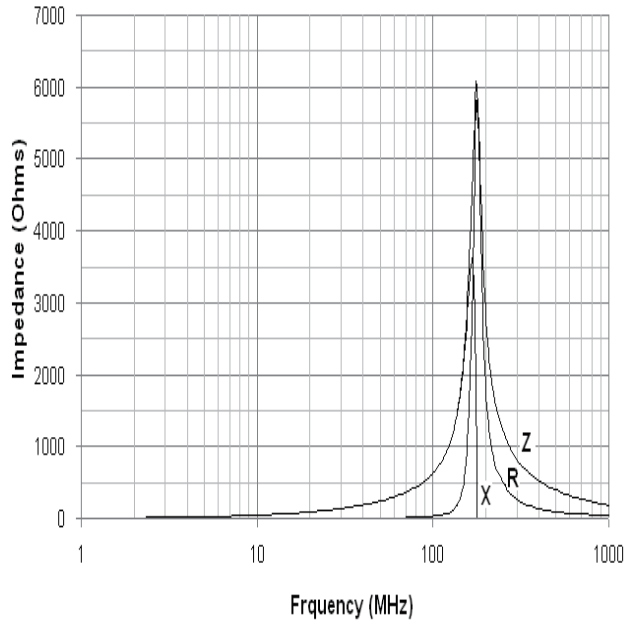
General Information:


Test conditions of Electrical Properties: 20±15°C, 30~70%RH
 Operating Temperature: -55°C to +125°C
 Storage Temperature: -40°C to +85°C

				UNIT: MM	 KOHER (Shanghai) Electronic Co.,Ltd
				SCALE:	
				SHEET: 1/2	
				APPROVAL: MAX	
				SIZE:	DESCRIPTION: SMD EMI Suppression Ferrite Bead
A	15-OCT-18	PDF	ZXG	PACKING UNIT: 4000 pcs	PART NO: FBSHS0805-601-201HR
REV	DATE	FILE	BY		

Typical Electrical Characteristics:

Impedance VS. Frequency Characteristics:



				UNIT: MM	 KOHER (Shanghai) Electronic Co.,Ltd
				SCALE:	
				SHEET: 2/2	
				APPROVAL: MAX	
				SIZE:	
				PACKING UNIT: 4000 pcs	DESCRIPTION: SMD EMI Suppression Ferrite Bead
A	15-OCT-18	PDF	ZXG		PART NO: FBSHS0805-601-201HR
REV	DATE	FILE	BY		

X-ON Electronics

Largest Supplier of Electrical and Electronic Components

Click to view similar products for [Ferrite Beads](#) category:

Click to view products by [KOHER](#) manufacturer:

Other Similar products are found below :

[CZB1EGTTP700P](#) [CZB1JGTTD152P](#) [CZB1JGTTD601P](#) [CZB2AFTTD800P](#) [CZB2AGTTD121P](#) [CZB2AGTTD601P](#) [CZB2BFTTE600P](#)
[PE-0402FB121ST](#) [NCB0603R301TR050F](#) [NCB0805A320TR050F](#) [NCB-H1206B680TR300F](#) [SMB2.5-1TR](#) [SMB2.5R-2](#) [CZB1EGTTP121P](#)
[CZB1JGTTD102P](#) [CZB1JGTTD121P](#) [CZB1JGTTD221P](#) [CZB1JGTTD600P](#) [CZB2AGTTD301P](#) [CZB2BFTTE301P](#) [CZB2BFTTE601P](#)
[4221R-1](#) [4221R-2](#) [4221R-3](#) [432703041971](#) [EMI0805R-2000](#) [EMI0805R-600](#) [SBY100505T-100Y-N](#) [NCB-GH0402D121TR060F](#) [NCB-](#)
[H1812D125TR150F](#) [CZB2AGTTD102P](#) [NCB0402P301TR005F](#) [NCB0603R152TR030F](#) [NCB0805A121TR050F](#) [NCB0805A301TR070F](#)
[NCB3312K900TR500F](#) [NCB-H0805A221TR300F](#) [NCB-H1806E181TR300F](#) [NCB0402P221TR030F](#) [NCB0402P300TR030F](#)
[NCB0402P601TR030F](#) [NCB0805A102TR040F](#) [NCB1806E151TR020F](#) [NCB-H0402P100TR200F](#) [NCB-H0603R121TR300F](#) [NCB-](#)
[H0805A220TR600F](#) [NCB-H1206B601TR200F](#) [CIM21J252NE](#) [EMI0805R-220](#) [74279250](#)