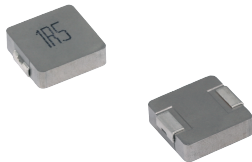


**MDE Series**  
**Molding Power Inductors**  
**Size 0618**



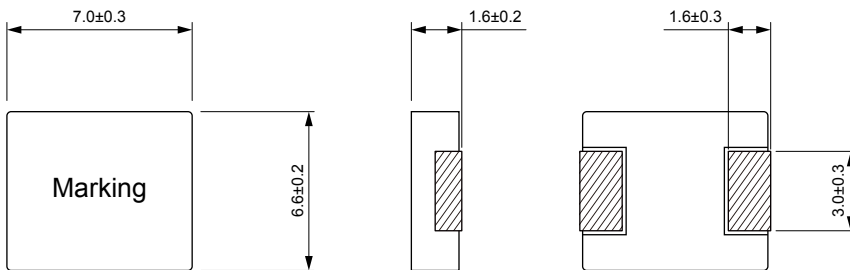
**FEATURES**

- High rated current
- Frequency up to 3 MHz
- 125 °C maximum total temperature operation
- Low core loss
- Ultra low buzz noise due to molding construction
- Halogen Free & ROHS compliant
- Operating temperature range - 55 °C to + 125 °C
- Quantity: 2000pcs

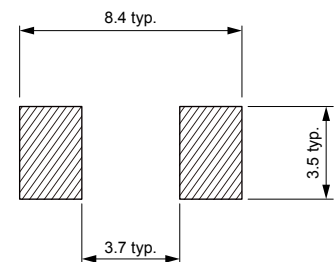
**APPLICATION**

- Laptops and PCs
- Switch and servers
- Base stations
- DC/DC converters
- Battery powered devices
- SSD modules

**Dimensions: [mm]**



**Land Pattern: [mm]**



**Electrical Properties:**

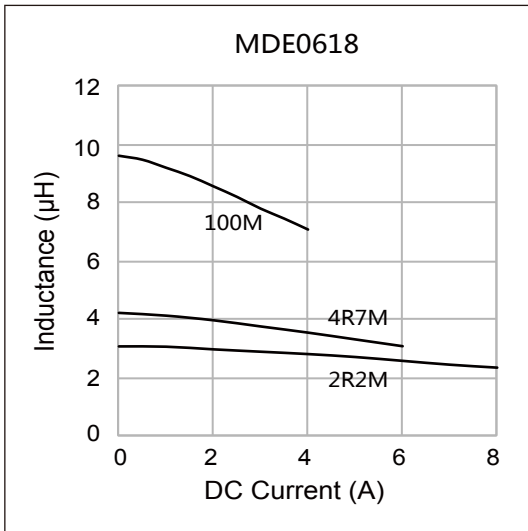
Part No	Inductance @ 100kHz/1V (µH)	Tolerance	DC Resistance Max. (mΩ)	Saturation Current Typ. (A)	Temperature Rise Current Typ. (A)
MDE0618-R10M	0.10	±20%	2.30	38.0	25.0
MDE0618-R22M	0.22	±20%	3.50	24.0	22.0
MDE0618-R47M	0.47	±20%	8.40	18.0	11.5
MDE0618-R68M	0.68	±20%	12.0	16.5	9.50
MDE0618-1R0M	1.00	±20%	16.0	12.0	8.50
MDE0618-1R5M	1.50	±20%	26.0	9.20	8.00
MDE0618-2R2M	2.20	±20%	35.0	8.00	7.00
MDE0618-3R3M	3.30	±20%	50.0	6.00	4.50
MDE0618-4R7M	4.70	±20%	62.0	5.00	4.00
MDE0618-6R8M	6.80	±20%	110	4.50	3.00
MDE0618-100M	10.0	±20%	155	4.00	2.30
MDE0618-220M	22.0	±20%	350	2.30	1.80

Saturation Current will cause L to drop approximately 30%

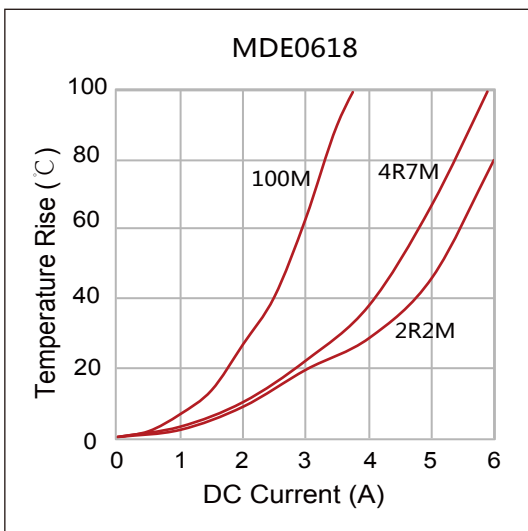
Temperature Rise Current: The actual value of DC current when the temperature rise is ΔT=40°C

Typical Electrical Characteristics:

Inductance vs DC Current Characteristics:



Temperature Rise vs DC Current Characteristics:



## X-ON Electronics

Largest Supplier of Electrical and Electronic Components

*Click to view similar products for [Fixed Inductors](#) category:*

*Click to view products by [KOHER](#) manufacturer:*

Other Similar products are found below :

[CR32NP-100KC](#) [70F224AI](#) [MHQ1005P10NJ](#) [MHQ1005P1N0S](#) [MHQ1005P2N4S](#) [MHQ1005P3N6S](#) [MHQ1005P5N1S](#) [MHQ1005P8N2J](#)  
[PE-53601NL](#) [PE-53602NL](#) [PG0936.113NLT](#) [9220-20](#) [9310-16](#) [PM06-2N7](#) [PM06-39NJ](#) [A01TK](#) [1206CS-471XJ](#) [HC2-R47-R](#) [HC8-1R2-R](#)  
[HCF1305-3R3-R](#) [1206CS-151XG](#) [RCH664NP-4R7M](#) [RCP1317NP-391L](#) [DH2280-4R7M](#) [DS1608C-106](#) [B10TJ](#) [B82498B3101J000](#) [ELJ-](#)  
[RE27NJF2](#) [1812CS-153XJ](#) [1812CS-183XJ](#) [1812CS-223XJ](#) [1812LS-104XJ](#) [1812LS-105XJ](#) [1812LS-124XJ](#) [1812LS-154XJ](#) [1812LS-223XJ](#)  
[1812LS-224XJ](#) [1812LS-563XJ](#) [1812LS-683XJ](#) [1812LS-824XJ](#) [NIN-FB101JTR110F](#) [NIN-FB471JTR62F](#) [NIN-FC1R5JTR220F](#) [NIN-](#)  
[HCR15JTRF](#) [NIN-HCR33JTRF](#) [NIN-HDR22JTRF](#) [NIN-HDR82JTRF](#) [NIN-HK2N7STRF](#) [NIN-PA150KTR370F](#) [NIN-PB100KTR550F](#)