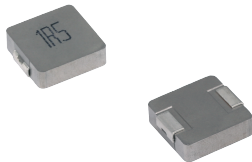


MDE Series
Molding Power Inductors
Size 0618



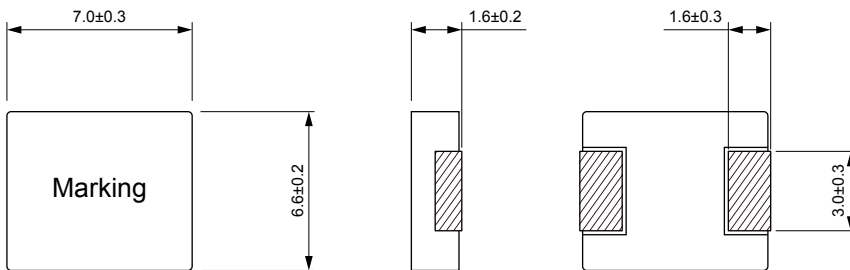
FEATURES

- High rated current
- Frequency up to 3 MHz
- 125 °C maximum total temperature operation
- Low core loss
- Ultra low buzz noise due to molding construction
- Halogen Free & ROHS compliant
- Operating temperature range - 55 °C to + 125 °C
- Quantity: 2000pcs

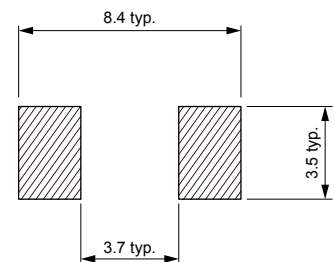
APPLICATION

- Laptops and PCs
- Switch and servers
- Base stations
- DC/DC converters
- Battery powered devices
- SSD modules

Dimensions: [mm]



Land Pattern: [mm]



Electrical Properties:

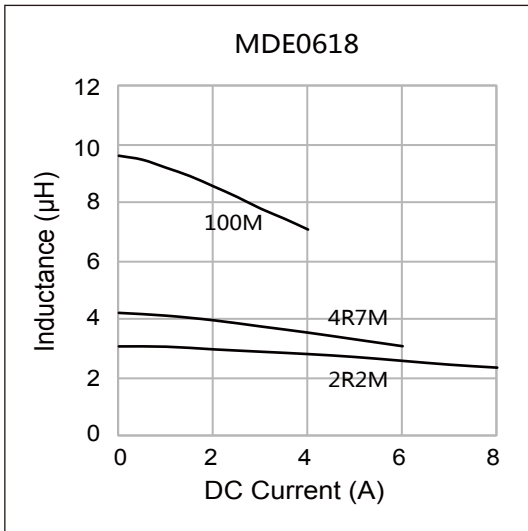
| Part No | Inductance @ 100kHz/1V (μH) | Tolerance | DC Resistance Max. (mΩ) | Saturation Current Typ. (A) | Temperature Rise Current Typ. (A) |
|--------------|-----------------------------|-----------|-------------------------|-----------------------------|-----------------------------------|
| MDE0618-R10M | 0.10 | ±20% | 2.30 | 38.0 | 25.0 |
| MDE0618-R22M | 0.22 | ±20% | 3.50 | 24.0 | 22.0 |
| MDE0618-R47M | 0.47 | ±20% | 8.40 | 18.0 | 11.5 |
| MDE0618-R68M | 0.68 | ±20% | 12.0 | 16.5 | 9.50 |
| MDE0618-1R0M | 1.00 | ±20% | 16.0 | 12.0 | 8.50 |
| MDE0618-1R5M | 1.50 | ±20% | 26.0 | 9.20 | 8.00 |
| MDE0618-2R2M | 2.20 | ±20% | 35.0 | 8.00 | 7.00 |
| MDE0618-3R3M | 3.30 | ±20% | 50.0 | 6.00 | 4.50 |
| MDE0618-4R7M | 4.70 | ±20% | 62.0 | 5.00 | 4.00 |
| MDE0618-6R8M | 6.80 | ±20% | 110 | 4.50 | 3.00 |
| MDE0618-100M | 10.0 | ±20% | 155 | 4.00 | 2.30 |
| MDE0618-220M | 22.0 | ±20% | 350 | 2.30 | 1.80 |

Saturation Current will cause L to drop approximately 30%

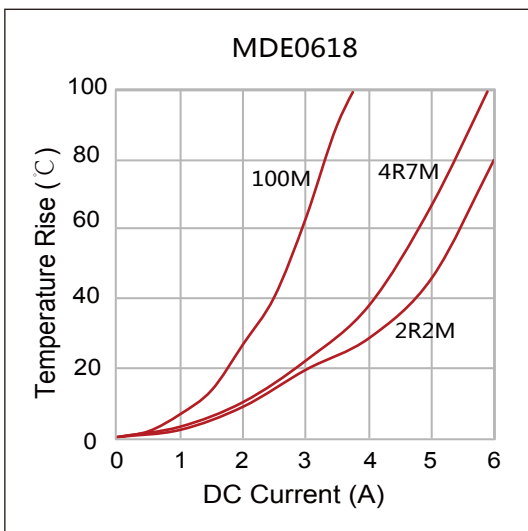
Temperature Rise Current: The actual value of DC current when the temperature rise is ΔT=40°C

Typical Electrical Characteristics:

Inductance vs DC Current Characteristics:



Temperature Rise vs DC Current Characteristics:



X-ON Electronics

Largest Supplier of Electrical and Electronic Components

Click to view similar products for [Fixed Inductors](#) category:

Click to view products by [KOHER](#) manufacturer:

Other Similar products are found below :

[CR32NP-100KC](#) [70F224AI](#) [MHQ1005P10NJ](#) [MHQ1005P1N0S](#) [MHQ1005P2N4S](#) [MHQ1005P3N6S](#) [MHQ1005P5N1S](#) [MHQ1005P8N2J](#)
[PE-53601NL](#) [PE-53602NL](#) [PG0936.113NLT](#) [9220-20](#) [9310-16](#) [PM06-2N7](#) [PM06-39NJ](#) [A01TK](#) [1206CS-471XJ](#) [HC2-R47-R](#) [HC8-1R2-R](#)
[HCF1305-3R3-R](#) [1206CS-151XG](#) [RCH664NP-4R7M](#) [RCP1317NP-391L](#) [DH2280-4R7M](#) [DS1608C-106](#) [B10TJ](#) [B82498B3101J000](#) [ELJ-](#)
[RE27NJF2](#) [1812CS-153XJ](#) [1812CS-183XJ](#) [1812CS-223XJ](#) [1812LS-104XJ](#) [1812LS-105XJ](#) [1812LS-124XJ](#) [1812LS-154XJ](#) [1812LS-223XJ](#)
[1812LS-224XJ](#) [1812LS-563XJ](#) [1812LS-683XJ](#) [1812LS-824XJ](#) [NIN-FB101JTR110F](#) [NIN-FB471JTR62F](#) [NIN-FC1R5JTR220F](#) [NIN-](#)
[HCR15JTRF](#) [NIN-HCR33JTRF](#) [NIN-HDR22JTRF](#) [NIN-HDR82JTRF](#) [NIN-HK2N7STRF](#) [NIN-PA150KTR370F](#) [NIN-PB100KTR550F](#)