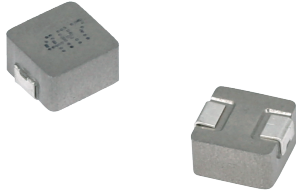


MDE Series

Molding Power Inductors Size 0840



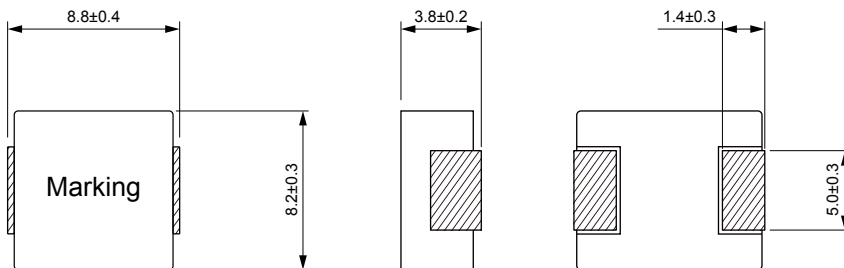
FEATURES

- ROHS, Halogen Free and REACH compliance
- High rated current
- Low core loss
- Ultra low buzz noise due to molding construction
- 9.2×8.5×4.0mm maximum surface mount package
- Operating temperature range - 55 °C to + 125 °C
- Quantity: 800pcs

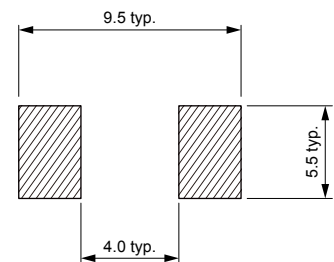
APPLICATION

- Laptops and PCs
- Switch and servers
- Base stations
- DC/DC converters
- Battery powered devices
- SSD modules

Dimensions: [mm]



Land Pattern: [mm]



Electrical Properties:

Part No	Inductance @ 100kHz/1V (μ H)	Tolerance	DC Resistance Max. (m Ω)	Saturation Current Max. (A)	Temperature Rise Current Max. (A)
MDE0840-R22M	0.22	±20%	1.80	55.0	30.0
MDE0840-R33M	0.33	±20%	2.40	40.0	25.0
MDE0840-R47M	0.47	±20%	2.80	36.0	25.0
MDE0840-R56M	0.56	±20%	3.20	23.0	22.0
MDE0840-R68M	0.68	±20%	3.80	22.0	21.0
MDE0840-R82M	0.82	±20%	4.40	19.0	19.0
MDE0840-1R0M	1.00	±20%	4.62	17.0	17.0
MDE0840-1R5M	1.50	±20%	7.60	15.0	15.0
MDE0840-1R8M	1.80	±20%	11.0	13.5	12.5
MDE0840-2R2M	2.20	±20%	11.4	12.0	12.0
MDE0840-3R3M	3.30	±20%	15.0	11.0	10.0
MDE0840-4R7M	4.70	±20%	26.5	10.5	8.50
MDE0840-5R6M	5.60	±20%	30.0	10.0	8.00
MDE0840-6R8M	6.80	±20%	36.8	8.00	7.00
MDE0840-8R2M	8.20	±20%	46.0	7.70	6.00
MDE0840-100M	10.0	±20%	59.0	7.00	5.50

Part No	Inductance @ 100kHz/1V (μ H)	Tolerance	DC Resistance Max. (m Ω)	Saturation Current Max. (A)	Temperature Rise Current Max. (A)
MDE0840-150M	15.0	\pm 20%	71.0	4.90	4.80
MDE0840-220M	22.0	\pm 20%	113	4.50	4.20
MDE0840-330M	33.0	\pm 20%	156	3.30	3.00
MDE0840-470M	47.0	\pm 20%	225	2.90	2.50

Saturation Current will cause L to drop approximately 30%

Temperature Rise Current: The actual value of DC current when the temperature rise is $\Delta T=40^{\circ}\text{C}$

X-ON Electronics

Largest Supplier of Electrical and Electronic Components

Click to view similar products for [Fixed Inductors](#) category:

Click to view products by [KOHER](#) manufacturer:

Other Similar products are found below :

[CR32NP-100KC](#) [CR54NP-470LC](#) [70F224AI](#) [MGDQ4-00004-P](#) [MHQ1005P10NJ](#) [MHQ1005P1N0S](#) [MHQ1005P2N4S](#) [MHQ1005P3N6S](#)
[MHQ1005P5N1S](#) [MHQ1005P8N2J](#) [PE-53601NL](#) [PE-53602NL](#) [PG0936.113NLT](#) [9220-20](#) [9310-16](#) [PM06-2N7](#) [PM06-39NJ](#) [A01TK](#)
[1206CS-471XJ](#) [HC2-R47-R](#) [HC8-1R2-R](#) [HCF1305-3R3-R](#) [1206CS-151XG](#) [RCH664NP-140L](#) [RCH664NP-4R7M](#) [RCP1317NP-391L](#)
[RCR110DNP-331L](#) [DH2280-4R7M](#) [DS1608C-106](#) [B10TJ](#) [B82498B3101J000](#) [ELJ-RE27NJF2](#) [1812CS-153XJ](#) [1812CS-183XJ](#) [1812CS-](#)
[223XJ](#) [1812LS-104XJ](#) [1812LS-105XJ](#) [1812LS-124XJ](#) [1812LS-154XJ](#) [1812LS-223XJ](#) [1812LS-224XJ](#) [1812LS-563XJ](#) [1812LS-683XJ](#)
[1812LS-824XJ](#) [NIN-FB101JTR110F](#) [NIN-FB471JTR62F](#) [NIN-FC1R5JTR220F](#) [NIN-HCR15JTRF](#) [NIN-HCR33JTRF](#) [NIN-HDR22JTRF](#)