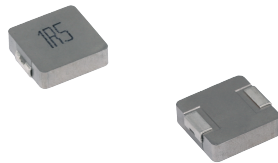


**MDE Series**  
**Molding Power Inductors**  
**Size 1250**



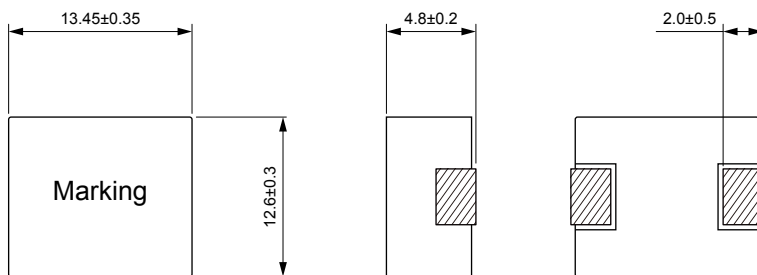
**FEATURES**

- ROHS, Halogen Free and REACH compliance
- High rated current
- 125 °C maximum total temperature operation
- Low core loss
- Ultra low buzz noise due to molding construction
- 13.8×12.9×5.0mm maximum surface mount package
- Operating temperature range - 55 °C to + 125 °C
- Quantity: 500pcs

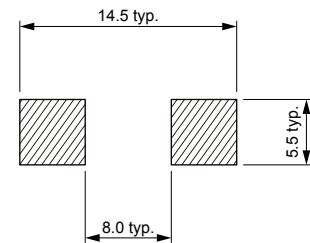
**APPLICATION**

- Laptops and PCs
- Switch and servers
- Base stations
- DC/DC converters
- Battery powered devices
- SSD modules

**Dimensions: [mm]**



**Land Pattern: [mm]**



**Electrical Properties:**

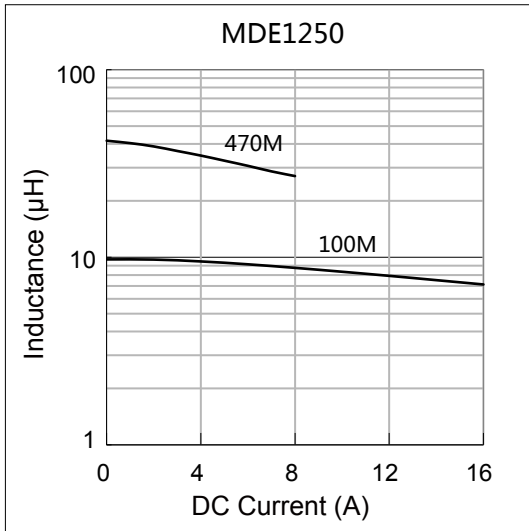
Part No	Inductance @ 100kHz/1V (μH)	Tolerance	DC Resistance Max. (mΩ)	Saturation Current Typ. (A)	Temperature Rise Current Typ. (A)
MDE1250-R22M	0.22	±20%	0.70	75.0	50.0
MDE1250-R36M	0.36	±20%	0.85	50.0	42.0
MDE1250-R50M	0.50	±20%	1.15	48.0	38.0
MDE1250-R68M	0.68	±20%	1.55	46.0	33.0
MDE1250-R82M	0.82	±20%	1.67	39.0	30.0
MDE1250-1R0M	1.00	±20%	2.20	35.0	26.0
MDE1250-1R5M	1.50	±20%	3.20	33.0	23.0
MDE1250-2R2M	2.20	±20%	5.00	24.0	15.0
MDE1250-3R3M	3.30	±20%	7.00	22.0	14.0
MDE1250-4R7M	4.70	±20%	9.00	20.0	13.0
MDE1250-6R8M	6.80	±20%	18.0	16.0	12.0
MDE1250-8R2M	8.20	±20%	20.0	13.0	9.50
MDE1250-100M	10.0	±20%	22.0	12.0	9.00
MDE1250-150M	15.0	±20%	30.0	10.0	8.00
MDE1250-220M	22.0	±20%	58.0	6.50	4.50
MDE1250-330M	33.0	±20%	84.0	6.00	3.50
MDE1250-470M	47.0	±20%	130	5.00	3.00

Saturation Current will cause L to drop approximately 30%

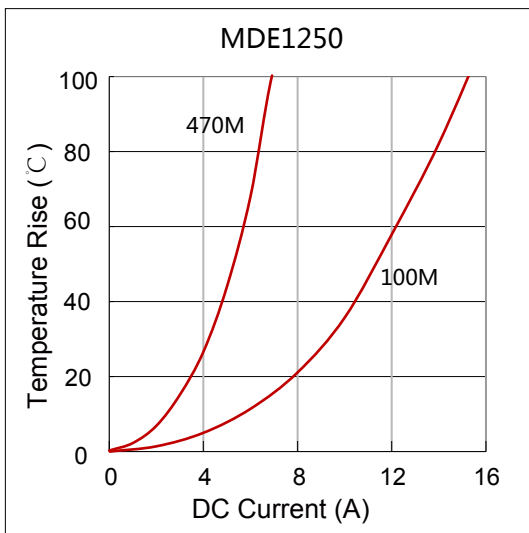
Temperature Rise Current: The actual value of DC current when the temperature rise is ΔT=40°C

Typical Electrical Characteristics:

Inductance vs DC Current Characteristics:



Temperature Rise vs DC Current Characteristics:



## X-ON Electronics

Largest Supplier of Electrical and Electronic Components

*Click to view similar products for [Fixed Inductors](#) category:*

*Click to view products by [KOHER](#) manufacturer:*

Other Similar products are found below :

[CR32NP-100KC](#) [70F224AI](#) [MHQ1005P10NJ](#) [MHQ1005P1N0S](#) [MHQ1005P2N4S](#) [MHQ1005P3N6S](#) [MHQ1005P5N1S](#) [MHQ1005P8N2J](#)  
[PE-53601NL](#) [PE-53602NL](#) [PG0936.113NLT](#) [9220-20](#) [9310-16](#) [PM06-2N7](#) [PM06-39NJ](#) [A01TK](#) [1206CS-471XJ](#) [HC2-R47-R](#) [HC8-1R2-R](#)  
[HCF1305-3R3-R](#) [1206CS-151XG](#) [RCH664NP-4R7M](#) [RCP1317NP-391L](#) [DH2280-4R7M](#) [DS1608C-106](#) [B10TJ](#) [B82498B3101J000](#) [ELJ-](#)  
[RE27NJF2](#) [1812CS-153XJ](#) [1812CS-183XJ](#) [1812CS-223XJ](#) [1812LS-104XJ](#) [1812LS-105XJ](#) [1812LS-124XJ](#) [1812LS-154XJ](#) [1812LS-223XJ](#)  
[1812LS-224XJ](#) [1812LS-563XJ](#) [1812LS-683XJ](#) [1812LS-824XJ](#) [NIN-FB101JTR110F](#) [NIN-FB471JTR62F](#) [NIN-FC1R5JTR220F](#) [NIN-](#)  
[HCR15JTRF](#) [NIN-HCR33JTRF](#) [NIN-HDR22JTRF](#) [NIN-HDR82JTRF](#) [NIN-HK2N7STRF](#) [NIN-PA150KTR370F](#) [NIN-PB100KTR550F](#)