

SPECIFICATION FOR APPROVAL

CUSTOMER:

CUSTOMER' S PART NO. :

DESCRIPTION:

QUANTITY:

PART NO.: TSDR6823-152N

DATE: 2016.06.30

REMARK:

CUSTOMER SIGNATURE

APPROVED BY	DRAWN BY
Tywin Yin	Candice Yang/Hannah Zhou

*Samples meet RoHS and
Lead-free requirement*

koHER

KOHER (Shanghai) Electronic Co.,Ltd



SPECIFICATION FOR APPROVAL

CUSTOMER		PART NO.	TSDR6823-152N
Cus.'s PART NO.		PAGE NO	2 of 3
DESCRIPTION		DATE	2016.06.30

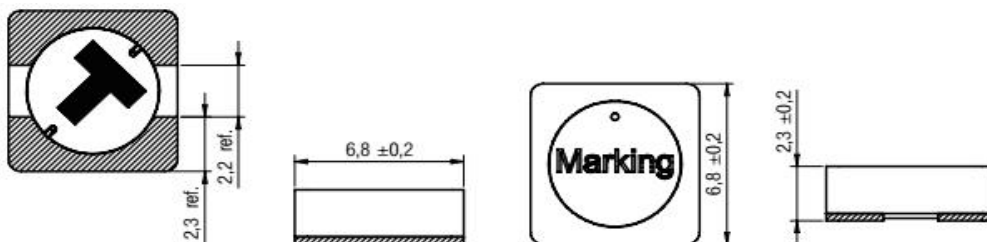
1. Features

- Extremely flat power inductor
- High current capability
- Magnetically shielded which results in a low leakage field
- Recommended solder profile: Reflow
- Operating temperature: $-40\text{ }^{\circ}\text{C}$ to $+125\text{ }^{\circ}\text{C}$

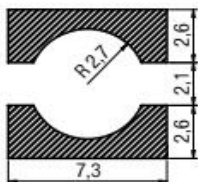
2. Applications

- Portable power like PDA, digital camera, PCMCIA cards and displays
- DC/DC converter
- Embedded PC
- Mobile data gathering, telemetric

3. Dimensions(in mm)



Land Pattern(in mm)





SPECIFICATION FOR APPROVAL

CUSTOMER		PART NO.	TSDR6823-152N
Cus.'s PART NO.		PAGE NO	3 of 3
DESCRIPTION		DATE	2016.06.30

4. Specification

Part Number	L (μH)	Tolerance (%)	I_R (A)	I_{sat} (A)	$R_{\text{DC typ.}}$ ($\text{m}\Omega$)	$R_{\text{DC max.}}$ ($\text{m}\Omega$)	Core Material
TSDR6823-152N	1500	± 30	0.08	0.11	7000	8000	NiZn

Note:

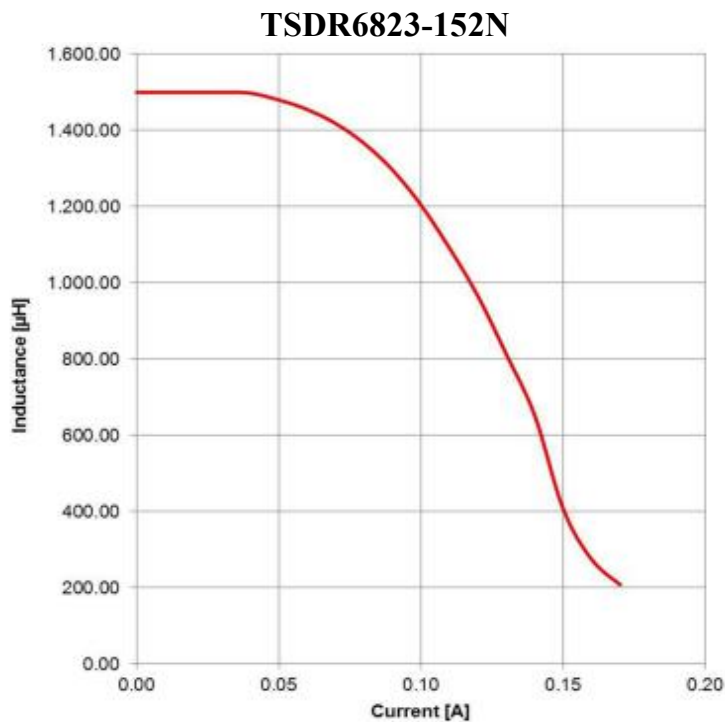
I_R referring to 30 K self-heating above ambient temperature.

I_{sat} referring to inductance loss of 35% typ.

It is recommended that the temperature of the part does not exceed 125°C under worst case operating conditions.

- Ambient temperature: -40°C to +95°C (referring to I_R)
- Operating temperature: -40°C to +125°C
- Storage temperature (on tape & reel): -20°C to +40°C; 75% RH max.
- Test conditions of Electrical Properties: 20°C, 33% RH, if not specified differently

5. Typical Performance Curves



6. Standard Packing Quatity

500pcs/Reel

KOHER (Shanghai) Electronic Co.,Ltd

X-ON Electronics

Largest Supplier of Electrical and Electronic Components

Click to view similar products for [Fixed Inductors](#) category:

Click to view products by [KOHER](#) manufacturer:

Other Similar products are found below :

[CR32NP-100KC](#) [CR54NP-470LC](#) [70F224AI](#) [MGDQ4-00004-P](#) [MHQ1005P10NJ](#) [MHQ1005P1N0S](#) [MHQ1005P2N4S](#) [MHQ1005P3N6S](#)
[MHQ1005P5N1S](#) [MHQ1005P8N2J](#) [PE-53601NL](#) [PE-53602NL](#) [PG0936.113NLT](#) [9220-20](#) [9310-16](#) [PM06-2N7](#) [PM06-39NJ](#) [A01TK](#)
[1206CS-471XJ](#) [HC2-R47-R](#) [HC8-1R2-R](#) [HCF1305-3R3-R](#) [1206CS-151XG](#) [RCH664NP-140L](#) [RCH664NP-4R7M](#) [RCP1317NP-391L](#)
[RCR110DNP-331L](#) [DH2280-4R7M](#) [DS1608C-106](#) [B10TJ](#) [B82498B3101J000](#) [ELJ-RE27NJF2](#) [1812CS-153XJ](#) [1812CS-183XJ](#) [1812CS-](#)
[223XJ](#) [1812LS-104XJ](#) [1812LS-105XJ](#) [1812LS-124XJ](#) [1812LS-154XJ](#) [1812LS-223XJ](#) [1812LS-224XJ](#) [1812LS-563XJ](#) [1812LS-683XJ](#)
[1812LS-824XJ](#) [NIN-FB101JTR110F](#) [NIN-FB471JTR62F](#) [NIN-FC1R5JTR220F](#) [NIN-HCR15JTRF](#) [NIN-HCR33JTRF](#) [NIN-HDR22JTRF](#)