

MANUFACTURER OF PLASTIC ENCLOSURES FOR THE ELECTRONICS



Kradex

FULL CATALOGUE OF Z-TYPE ENCLOSURES



Kradex

We have been a Polish producer of plastic enclosures for electronic appliances operating on the market **since 1985**. We deliver our products to more than 2500 domestic and international customers. Products from the wide range of catalogue items are normally made of ABS material for the professional line or of PS material for the economic line as well as of PC material for the Waterproofer line, among others. Enclosures are most often in black, light grey and white. Our range includes the following types of enclosures: two-part, with side panels, modular enclosures for DIN rails, and with space for batteries and



a lid; and enclosures for power supplies, alarm panels and remote controls. The majority of these products have been granted certificates such as **IP52**, **IP53** or **IP54**. The hermetic enclosures have IP65 and IK09 certificates, and the category with the cast gasket has the **IP67** certificate. In 2016, Kradex became **ISO 9001** certified for introducing all necessary management systems, which confirm its quality. There are storage facilities directly at the production facility with a total of more than 1500 m², which guarantee the maintenance of high stock levels.



The milling of the enclosures

Every enclosure, whether catalogue or made to order, can have all the most-popular utility openings.

The machining of such materials as steel, aluminium, copper, and brass is done with these machines:

- **DMG Morii 1100 ecomill**
- **HAAS VF1**
- **HAAS VF2**

The machining of plastics such as ABS, PC, PS, and polyester is done with these machines:

- **SERON**
- **ATMS**

We do hole milling, facing, or threading according to the Customer's specifications. **Up to 0.2 mm** accuracy is achieved thanks to modern machinery using the latest CAD/CAM software as well as top-grade milling cutters. We mill enclosures if the order includes at least 50 pieces, but it is also possible to make a single prototype of the milled enclosure.

catalogue enclosures

customised enclosures



examples of milling



Individual orders – from design to mass production

Our experts, after familiarising themselves with the customer's required specifications, draw up a project for the new enclosure, make a 3D model, and prepare an injection mould for production. The buyer has also the possibility to choose the material and the colour of the future product. We use high-quality machines, such as:

Fine-hole EDM's:

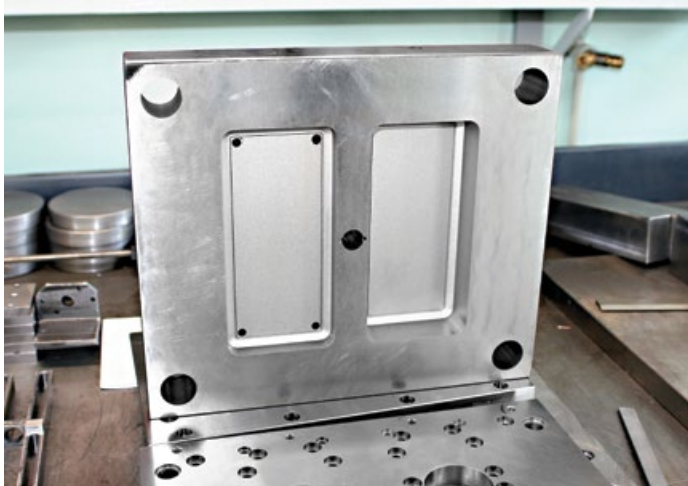
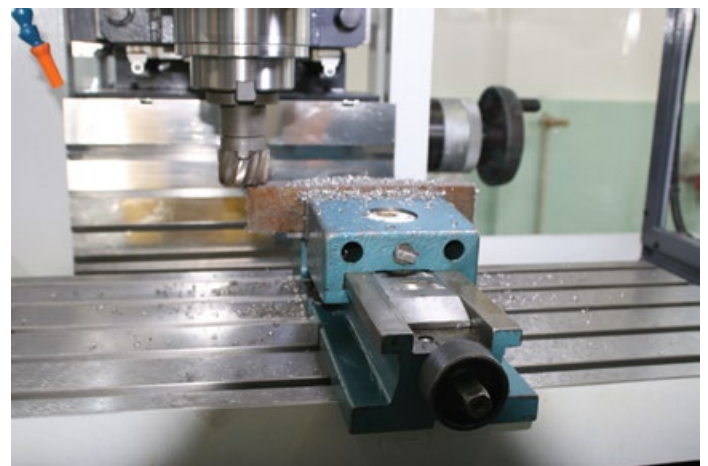
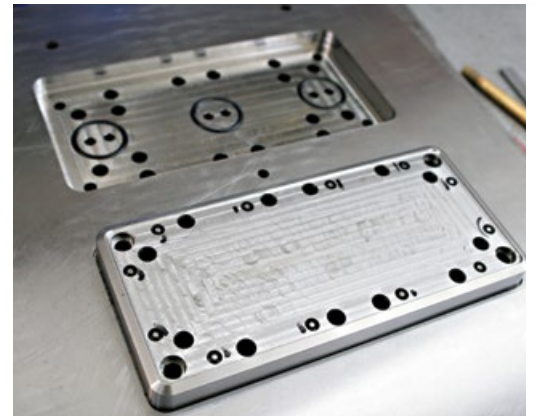
- Mitsubishi EA12S
- Accutex HD75
- Accutex AM32N2

Fine-hole WEDM's:

- Mitsubishi MV2400S
- Accutex AU-300iA

3D printers:

- Zortrax M200



▶ Scan and watch the film about us

NEW IN OFFER



ZD1010J

MATERIAL:
ABS V0
WITH FILTER

H	W	L [mm]:
65,3	89,8	177,8



AVAILABLE COLOUR:



Z118

MATERIAL:
ABS

H	W	L [mm]:
18,95	60	97,85



AVAILABLE COLOUR:



Z127S

MATERIAL:
ABS WITH CAST
GASKET

H	W	L [mm]:
41,7	100	180



AVAILABLE COLOUR:



Z110

MATERIAL:
PS/ABS V0

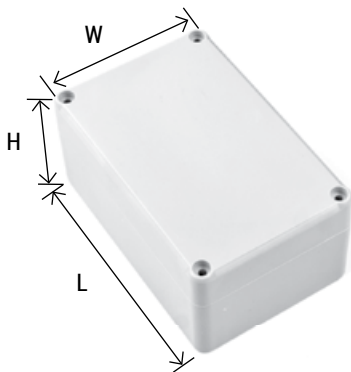
H	W	L [mm]:
65,2	90	105



AVAILABLE COLOUR:



LEGEND



- PS – polystyrene material
- ABS – flammable ABS material
- ABS V0 – self-extinguishing ABS material
- PC – polycarbonate material
- W – ventilated enclosure
- H – enclosure with seal
- S – enclosure hermetically sealed with cast gasket
- U – enclosure with mounting ears
- TM – brass sleeve packing
- A,B,C – versions of the enclosure
- () – the dimensions in parentheses are inclusive of the mounting flanges

- bright white, RAL 9003 - RAL 9016
- light grey, RAL 7035

- black, RAL 9005
- transparent, clear

On request, we can produce enclosures in other material and colour from the RAL palette in the amount of min. 500-1000 pieces, depending on the enclosure dimensions.

HERMETIC ENCLOSURES WITH CAST GASKET



Foam gasket series FERMAPOR K-31 provides:

- quicker and more accurate installation without the need for laying and cutting a traditional gasket
- multi-year durability
- very good insulating properties
- top-class end product
- improved resistance to environmental factors
- better vibration damping
- the gasket does not deform plastically nor connection gaps are created.





Z46S



MATERIAL:
ABS WITH CAST
GASKET

H	W	L [mm]:
52,6	144,6	197,8

AVAILABLE COLOUR:



Z46AS



MATERIAL:
ABS WITH CAST
GASKET

H	W	L [mm]:
72,3	144,7	198,1

AVAILABLE COLOUR:



Z54S



MATERIAL:
ABS WITH CAST
GASKET

H	W	L [mm]:
41	74,5	89,4

AVAILABLE COLOUR:



Z56S



MATERIAL:
ABS WITH CAST
GASKET

H	W	L [mm]:
41,7	64,3	88,2

AVAILABLE COLOUR:



Z57S



MATERIAL:
ABS WITH CAST
GASKET

H	W	L [mm]:
54,6	78,4	188,2

AVAILABLE COLOUR:



Z58S



MATERIAL:
ABS WITH CAST
GASKET

H	W	L [mm]:
54,9	82,2	158,2

AVAILABLE COLOUR:



Z59S



MATERIAL:
ABS WITH CAST
GASKET

H	W	L [mm]:
58,1	115,4	125,3

AVAILABLE COLOUR:



Z74S



MATERIAL:
ABS WITH CAST
GASKET

H	W	L [mm]:
55,7	126	176,8
(56,7)		

AVAILABLE COLOUR:



Z90S



MATERIAL:
ABS WITH CAST
GASKET

H	W	L [mm]:
79,8	174,8	225
(81,3)		

AVAILABLE COLOUR:



Z95S



MATERIAL:
ABS WITH CAST
GASKET

H	W	L [mm]:
95,5	193,2	283
(96,7)		

AVAILABLE COLOUR:





Z96S

MATERIAL:
ABS WITH CAST
GASKET



H	W	L [mm]:
36,8	50	70

AVAILABLE COLOUR:



Z117S

MATERIAL:
ABS WITH CAST
GASKET



H	W	L [mm]:
36,7	57,1	63,2

AVAILABLE COLOUR:



Z111S

MATERIAL:
ABS WITH CAST
GASKET



H	W	L [mm]:
55	80	82

AVAILABLE COLOUR:



Z124S

MATERIAL:
ABS WITH CAST
GASKET



H	W	L [mm]:
38,5	144,6	184,7

AVAILABLE COLOUR:



Z116S

MATERIAL:
ABS WITH CAST
GASKET



H	W	L [mm]:
36,2	48,9	51

AVAILABLE COLOUR:



Z127

MATERIAL:
ABS WITH CAST
GASKET



AVAILABLE COLOUR:



NEW





WATERPROOFER SERIES HERMETIC ENCLOSURES



Kradex ZP series hermetic enclosures are designed for all devices that require hermetic enclosure. Available in ABS and PC versions. The cover with an indentation for a keypad or sticker can be made of transparent polycarbonate. Both parts of the enclosure are screwed with captive M3 screws.



Mounting plates for installation inside the enclosures

The plates are made of 2 mm galvanized steel sheet. They allow various components to be mounted anywhere on the mounting plate. The plates are mounted to the posts in the enclosure using screws. They make it easy to install complex devices consisting of a large number of components outside the enclosure, and then to install such a complex device in the enclosure. They can also be used to easily clamp workpieces that do not fit into the spacing of the posts in the enclosure.



DIN rails

The mounting posts ensure that the rail is securely fastened. This makes it possible to install other DIN rail-mounted enclosures inside the ZP enclosure.

ZP105.105.60JP TM

NEW



MATERIAL:
ABS-PC and PC
WITH SEAL

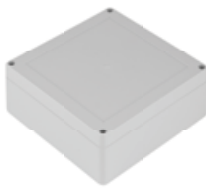
H	W	L [mm]:
60	105	105

AVAILABLE COLOUR:



ZP105.105.60J TM

NEW



MATERIAL:
ABS-PC and PC
WITH SEAL

H	W	L [mm]:
60	105	105

AVAILABLE COLOUR:



ZP120.120.60JP TM

NEW



MATERIAL:
ABS-PC and PC
WITH SEAL

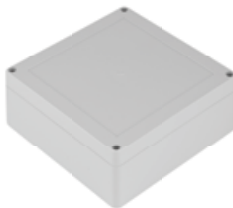
H	W	L [mm]:
60	120	120

AVAILABLE COLOUR:



ZP120.120.60J TM

NEW



MATERIAL:
ABS-PC and PC
WITH SEAL

H	W	L [mm]:
60	120	120

AVAILABLE COLOUR:



ZP135.135.60JP TM

NEW



MATERIAL:
ABS-PC and PC
WITH SEAL

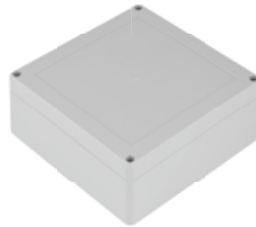
H	W	L [mm]:
60	135	135

AVAILABLE COLOUR:



ZP135.135.60J TM

NEW



MATERIAL:
ABS-PC and PC
WITH SEAL

H	W	L [mm]:
60	135	135

AVAILABLE COLOUR:



ZP150.150.60JP TM

NEW



MATERIAL:
ABS-PC and PC
WITH SEAL

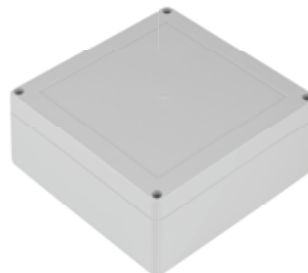
H	W	L [mm]:
60	150	150

AVAILABLE COLOUR:



ZP150.150.60J TM

NEW



MATERIAL:
ABS-PC and PC
WITH SEAL

H	W	L [mm]:
60	150	150

AVAILABLE COLOUR:



HERMETIC ENCLOSURES

Hermetic enclosures with gaskets are one of the most rapidly evolving product categories. Available in versions with or without gaskets, with brass sleeves and in various colours: light grey, transparent, and with transparent top and light grey bottom. We make those enclosures of polystyrene or ABS. Most of the products are IP65 certified, as well as IK07 and IK09 certified. This series of enclosures is ideal for use in damp environments.





Z46

MATERIAL:
PS/ABS
WITH SEAL



H	W	L [mm]:
52,6	144,6	197,8



AVAILABLE COLOUR:



Z58J

MATERIAL:
PS/ABS
WITH SEAL



H	W	L [mm]:
54,9	88,2	158,2



AVAILABLE COLOUR:



Z46A

MATERIAL:
PS/ABS
WITH SEAL



H	W	L [mm]:
72,3	144,7	198,1



AVAILABLE COLOUR:



Z59J

MATERIAL:
PS/ABS
WITH SEAL



H	W	L [mm]:
58,1	115,4	125,3



AVAILABLE COLOUR:



Z54J

MATERIAL:
PS/ABS
WITH SEAL



H	W	L [mm]:
41	74,5	89,4



AVAILABLE COLOUR:



Z65J

MATERIAL:
PS/ABS
WITH SEAL



H	W	L [mm]:
30,1	40,1	64,4



AVAILABLE COLOUR:



Z56J

MATERIAL:
PS/ABS
WITH SEAL



H	W	L [mm]:
41,7	64,3	88,2



AVAILABLE COLOUR:



Z74J

MATERIAL:
PS/ABS
WITH SEAL



H	W	L [mm]:
55,7	126	176,8



AVAILABLE COLOUR:



Z57J

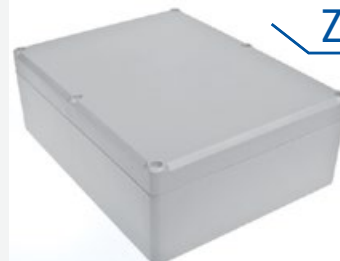
MATERIAL:
PS/ABS
WITH SEAL



H	W	L [mm]:
54,6	78,4	118,2



AVAILABLE COLOUR:



Z90J

MATERIAL:
PS/ABS
WITH SEAL



H	W	L [mm]:
79,8 (81,3)	174,8	225



AVAILABLE COLOUR:





Z95J

MATERIAL:
PS/ABS
WITH SEAL

H	W	L [mm]:
95,5 (96,7)	193,2	283



AVAILABLE COLOUR:



NEW



Z124

MATERIAL:
ABS WITH SEAL

H	W	L [mm]:
38,5	144,6	184,7



AVAILABLE COLOUR:



NEW



Z96J

MATERIAL:
PS/ABS
WITH SEAL

H	W	L [mm]:
36,8	50	70



AVAILABLE COLOUR:



Z127

MATERIAL:
ABS WITH SEAL

H	W	L [mm]:
41,7	100	180



AVAILABLE COLOUR:



NEW



Z111J

MATERIAL:
PS/ABS
WITH SEAL

H	W	L [mm]:
55	80	82



AVAILABLE COLOUR:



Z128J TM

MATERIAL:
ABS-PC and PC
WITH SEAL

H	W	L [mm]:
40	70	105



AVAILABLE COLOUR:



NEW



Z116J

MATERIAL:
PS/ABS
WITH SEAL

H	W	L [mm]:
36,2	48,9	51



AVAILABLE COLOUR:



Z128UJ TM

MATERIAL:
ABS-PC and PC
WITH SEAL

H	W	L [mm]:
40	70	131,3



AVAILABLE COLOUR:



NEW



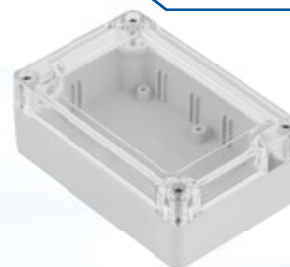
Z117J

MATERIAL:
PS/ABS
WITH SEAL

H	W	L [mm]:
36,7	57,1	63,2



AVAILABLE COLOUR:



Z128JP TM

MATERIAL:
ABS-PC and PC
WITH SEAL

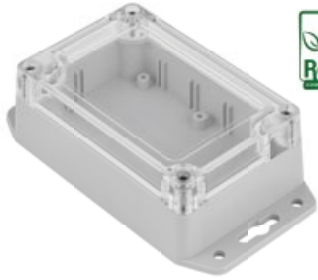
H	W	L [mm]:
40	70	105



AVAILABLE COLOUR:



Z128UJP TM



NEW

MATERIAL:
ABS-PC and PC
WITH SEAL

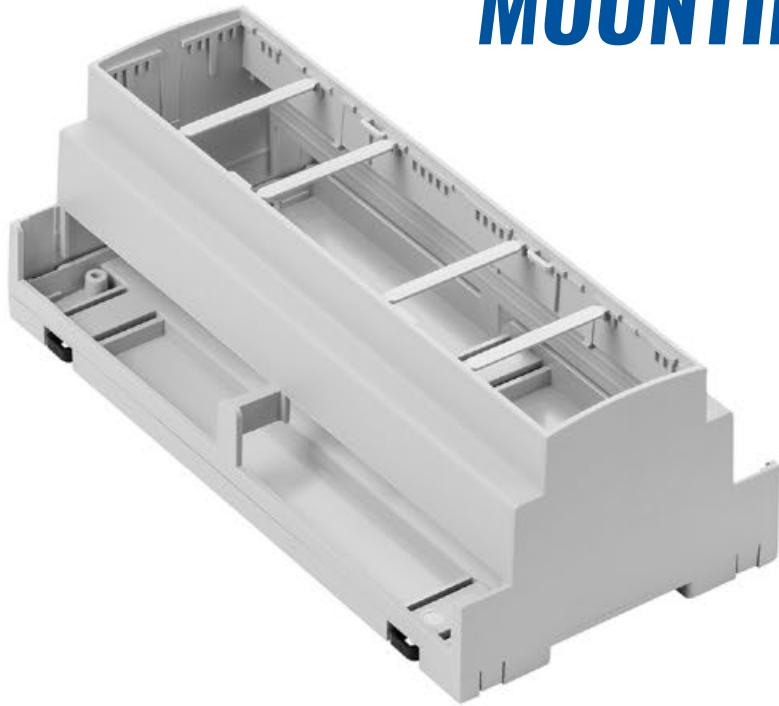
H	W	L [mm]:
40	70	131,3

AVAILABLE COLOUR:





DIN-R SERIES MODULAR ENCLOSURES FOR DIN MOUNTING



The new selection of enclosures for DIN rails, based on the state-of-the-art design of the removable masking frames, facilitating adjustments to the miscellaneous specifications applied inside the electronics.

- the possibility to individually adjust the frame, the base and the joint masks, giving the opportunity to choose from several dozen variants
- product versions: 6M, 9M, and 10M
- ABS V0 material
- the possibility to install 3 PCB boards vertically and horizontally
- mounting on rails with 3 latches enabling simple insertion and withdrawal from the enclosure
- protection from falling out, without accessory metal elements




AVAILABLE NOW

ZD1010J NEW

MATERIAL:
ABS V0
WITH FILTER

H	W	L [mm]:
65,3	89,8	177,8

AVAILABLE COLOUR:



MODULAR DIN RAIL ENCLOSURES

Modular DIN rail enclosures - suitable for DIN rail mounting. They are available in light grey and black. The products are made of the following materials: polystyrene, ABS, and ABS V0 (self-extinguishing).





Z100

NEW

MATERIAL:
PS/ABS VO

H	W	L [mm]:
64,7	69,7	89,3

AVAILABLE COLOUR:

PS/ABS VO ABS VO



Z105

NEW

MATERIAL:
PS/ABS VO

H	W	L [mm]:
65	18	90

AVAILABLE COLOUR:

PS/ABS VO ABS VO



Z101

NEW

MATERIAL:
PS/ABS VO

H	W	L [mm]:
65,8	89,4	107,2

AVAILABLE COLOUR:

PS/ABS VO ABS VO



Z106

NEW

MATERIAL:
PS/ABS VO

H	W	L [mm]:
65	90,1	35,2

AVAILABLE COLOUR:

PS/ABS VO ABS VO



Z102

NEW

MATERIAL:
PS/ABS VO

H	W	L [mm]:
65,1	53,3	89,2

AVAILABLE COLOUR:

PS/ABS VO ABS VO



Z107

NEW

MATERIAL:
PS/ABS VO

H	W	L [mm]:
65,2	52,6	90

AVAILABLE COLOUR:

PS/ABS VO ABS VO



Z103

NEW

MATERIAL:
PS/ABS VO

H	W	L [mm]:
62,9	34,45	88,25

AVAILABLE COLOUR:

PS/ABS VO ABS VO



Z108

NEW

MATERIAL:
PS/ABS VO

H	W	L [mm]:
65,1	70	90,1

AVAILABLE COLOUR:

PS/ABS VO ABS VO



Z104

NEW

MATERIAL:
PS/ABS VO

H	W	L [mm]:
62,9	89,7	138,6

AVAILABLE COLOUR:

PS/ABS VO ABS VO



Z109

NEW

MATERIAL:
PS/ABS VO

H	W	L [mm]:
65,4	87,6	90,2

AVAILABLE COLOUR:

PS/ABS VO ABS VO



**Z110**MATERIAL:
PS/ABS V0

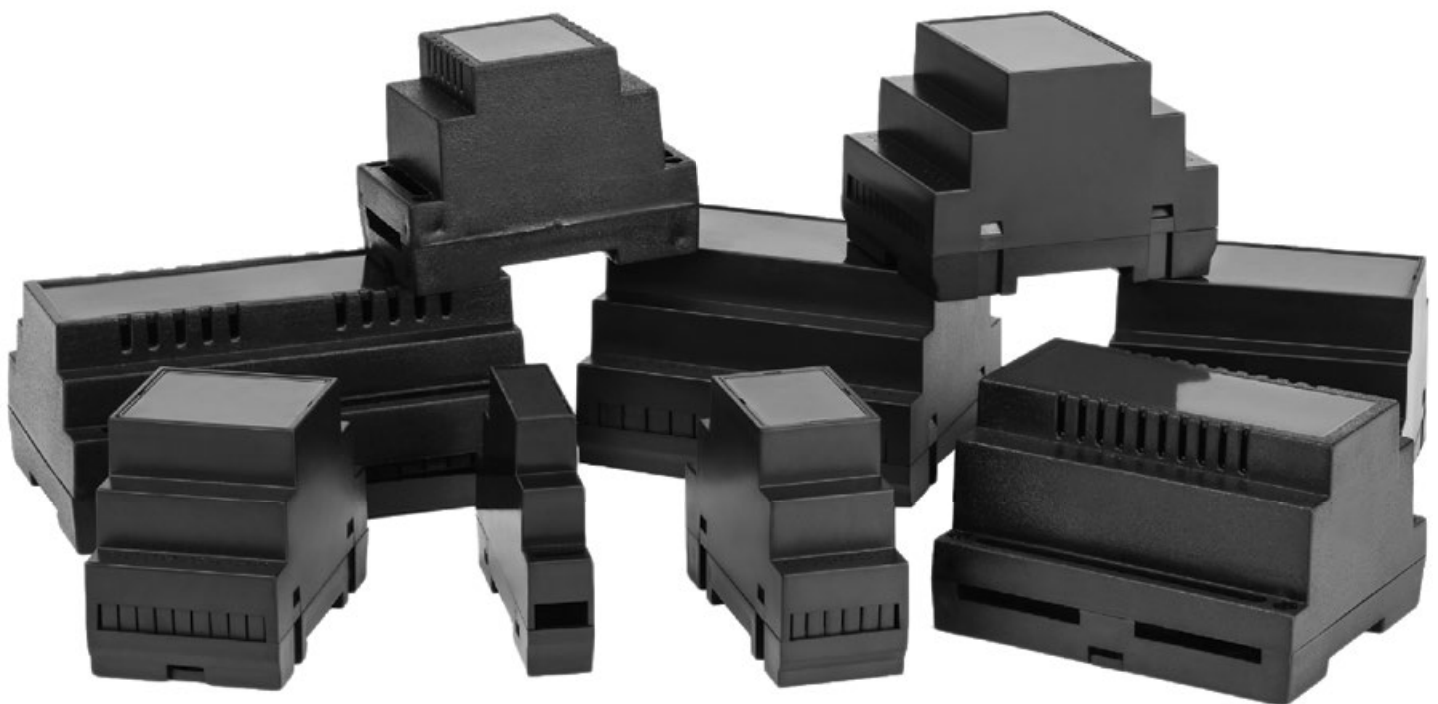
NEW

H	W	L [mm]:
65,2	90	105



AVAILABLE COLOUR:

PS/ABS V0 ABS V0

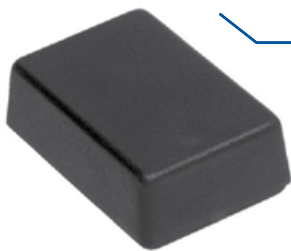


PROFESSIONAL



Professional is a line of products made of ABS. The selection of high quality materials guarantees a superior class of products.

The solution for more demanding and big-budget project.



Z43

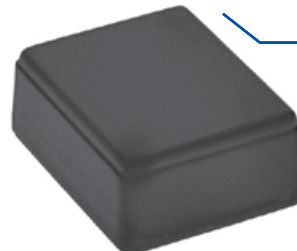
MATERIAL:
ABS

H	W	L [mm]:
16	31	46

AVAILABLE COLOUR:



WITH A LID



Z47

MATERIAL:
ABS

H	W	L [mm]:
20,55	40,35	50,2

AVAILABLE COLOUR:



TWO-PART



Z44

MATERIAL:
ABS

H	W	L [mm]:
33,1	79,9	149,3

AVAILABLE COLOUR:



WITH A SPACE FOR A DISPLAY



Z47U

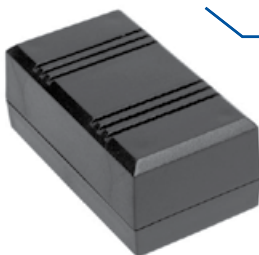
MATERIAL:
ABS

H	W	L [mm]:
20,75	40,35 (59,8)	50,2

AVAILABLE COLOUR:



TWO-PART



Z45

MATERIAL:
ABS

H	W	L [mm]:
43,3	56	99,9

AVAILABLE COLOUR:



TWO-PART



Z48

MATERIAL:
ABS

H	W	L [mm]:
42,2 (36)	81,5	145,2

AVAILABLE COLOUR:



WITH BATTERY COMPARTMENT



Z45W

MATERIAL:
ABS

H	W	L [mm]:
43,3	56,1	99,8

AVAILABLE COLOUR:



TWO-PART



Z49

MATERIAL:
ABS

H	W	L [mm]:
39,2 (45,35)	81,45	145,1

AVAILABLE COLOUR:



WITH BATTERY COMPARTMENT



Z50

MATERIAL:
ABS

H	W	L [mm]:
43,3	92,5	147,6

AVAILABLE COLOUR:



WITH SIDE PANELS



Z53U

MATERIAL:
ABS

H	W	L [mm]:
21,8	65,1	112

AVAILABLE COLOUR:



TWO-PART



Z50A

MATERIAL:
ABS

H	W	L [mm]:
36,2	92,5	147,6

AVAILABLE COLOUR:



WITH SIDE PANELS



Z55

MATERIAL:
ABS

H	W	L [mm]:
27,95	63,5	104,55

AVAILABLE COLOUR:



WITH BATTERY COMPARTMENT



Z50B

MATERIAL:
ABS

H	W	L [mm]:
36,2	92,5	147,6

AVAILABLE COLOUR:



WITH SIDE PANELS



Z60

MATERIAL:
ABS

H	W	L [mm]:
36,15	74,5	67,85

AVAILABLE COLOUR:



WITH SIDE PANELS



Z51U

MATERIAL:
ABS

H	W	L [mm]:
27	49	155

AVAILABLE COLOUR:



TWO-PART



Z61J

MATERIAL:
ABS

H	W	L [mm]:
43	80	120

AVAILABLE COLOUR:



Z52U

MATERIAL:
ABS

H	W	L [mm]:
40	74	145

AVAILABLE COLOUR:



TWO-PART



Z62

MATERIAL:
ABS

H	W	L [mm]:
28,7	63,2	83

AVAILABLE COLOUR:



TWO-PART



Z63

MATERIAL:
ABS

H	W	L [mm]:
15	17	26

AVAILABLE COLOUR:



WITH A LID



Z64

MATERIAL:
ABS

H	W	L [mm]:
57	65	89

AVAILABLE COLOUR:



FOR POWER SUPPLY



Z66

MATERIAL:
ABS

H	W	L [mm]:
65,7 (71,15)	78,8	132,05 (167,25)

AVAILABLE COLOUR:



FOR POWER SUPPLY



Z67

MATERIAL:
ABS

H	W	L [mm]:
29,1	63,3	69,3

AVAILABLE COLOUR:



WITH SIDE PANELS



Z68

MATERIAL:
ABS

H	W	L [mm]:
27,7	49,75	64,45

AVAILABLE COLOUR:



TWO-PART



Z68U

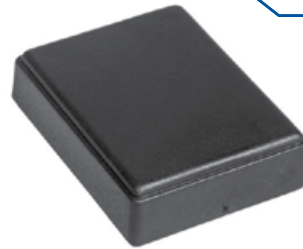
MATERIAL:
ABS

H	W	L [mm]:
27,7	49,75	64,45

AVAILABLE COLOUR:



TWO-PART



Z69

MATERIAL:
ABS

H	W	L [mm]:
17,7	49,45	64,5

AVAILABLE COLOUR:



TWO-PART



Z69U

MATERIAL:
ABS

H	W	L [mm]:
17,8	49,45 (68,8)	64,5

AVAILABLE COLOUR:



TWO-PART



Z70

MATERIAL:
ABS

H	W	L [mm]:
27,9	58,9	75,8

AVAILABLE COLOUR:



TWO-PART



Z70U

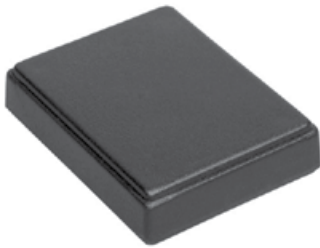
MATERIAL:
ABS

H	W	L [mm]:
27,85	58,8 (77,95)	75,85

AVAILABLE COLOUR:



TWO-PART



Z71

MATERIAL:
ABS

H	W	L [mm]:
18,1	59,4	76,45

AVAILABLE COLOUR:



TWO-PART



Z75

MATERIAL:
ABS

H	W	L [mm]:
23,2	45,3	95

AVAILABLE COLOUR:



TWO-PART



Z71U

MATERIAL:
ABS

H	W	L [mm]:
27,85	58,8	75,85
	(77,95)	

AVAILABLE COLOUR:



TWO-PART



Z76

MATERIAL:
ABS

H	W	L [mm]:
28,3	59,5	109,9

AVAILABLE COLOUR:



TWO-PART



Z72

MATERIAL:
ABS

H	W	L [mm]:
48,8	102,1	178,9

AVAILABLE COLOUR:



TWO-PART



Z77

MATERIAL:
ABS

H	W	L [mm]:
37,1	72	124,7

AVAILABLE COLOUR:



TWO-PART



Z72U

MATERIAL:
ABS

H	W	L [mm]:
36,6	101,5	177,9
		(199,7)

AVAILABLE COLOUR:



TWO-PART



Z78

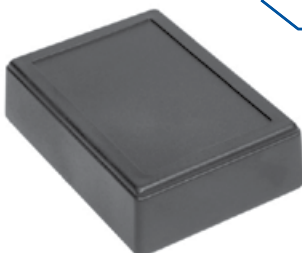
MATERIAL:
ABS

H	W	L [mm]:
42,25	84,7	154,1

AVAILABLE COLOUR:



TWO-PART



Z73

MATERIAL:
ABS

H	W	L [mm]:
31,9	79,2	109,2

AVAILABLE COLOUR:



TWO-PART



Z79

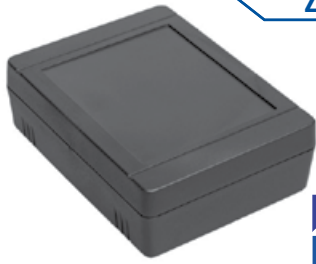
MATERIAL:
ABS

H	W	L [mm]:
38	80	90

AVAILABLE COLOUR:



TWO-PART



Z80

MATERIAL:
ABS

H	W	L [mm]:
37,85	89,25	118,95

AVAILABLE COLOUR:



TWO-PART



Z85

MATERIAL:
ABS

H	W	L [mm]:
22	35,2	45,9

AVAILABLE COLOUR:



WITH A LID



Z81

MATERIAL:
ABS

H	W	L [mm]:
14,6	16,3	20

AVAILABLE COLOUR:



WITH A LID



Z86

MATERIAL:
ABS

H	W	L [mm]:
21,5	41,8	41,8

AVAILABLE COLOUR:



WITH A LID



Z82

MATERIAL:
ABS

H	W	L [mm]:
16,5	22,1	22,2

AVAILABLE COLOUR:



WITH A LID



Z87

MATERIAL:
ABS

H	W	L [mm]:
26	52	46

AVAILABLE COLOUR:



WITH A LID



Z83

MATERIAL:
ABS

H	W	L [mm]:
17,2	22	32

AVAILABLE COLOUR:



WITH A LID



Z89J

MATERIAL:
ABS

H	W	L [mm]:
25	68,7	141,6

AVAILABLE COLOUR:



WITH A LID



Z84

MATERIAL:
ABS

H	W	L [mm]:
22,5	22	46

AVAILABLE COLOUR:



WITH A LID



Z91J

MATERIAL:
ABS

H	W	L [mm]:
36,2	99,9	129,9

AVAILABLE COLOUR:



TWO-PART





Z93J

MATERIAL:
ABS



H	W	L [mm]:
29,4	69,65	130,6



AVAILABLE COLOUR:



TWO-PART



Z99

MATERIAL:
ABS



H	W	L [mm]:
51,5	60,7	120,8



AVAILABLE COLOUR:



WITH SIDE PANELS



Z94

MATERIAL:
ABS



H	W	L [mm]:
26,7	46,8	65,8

AVAILABLE COLOUR:



TWO-PART



Z112

MATERIAL:
ABS



H	W	L [mm]:
60	136	185,5



AVAILABLE COLOUR:



WITH SIDE PANELS



Z94W

MATERIAL:
ABS



H	W	L [mm]:
26,5	46,5	65,5

AVAILABLE COLOUR:



TWO-PART



Z112A

MATERIAL:
ABS



H	W	L [mm]:
40	135,9	184,6



AVAILABLE COLOUR:



WITH SIDE PANELS



Z97

MATERIAL:
ABS



H	W	L [mm]:
31,1	60,7	120,8



AVAILABLE COLOUR:



WITH SIDE PANELS



Z112B

MATERIAL:
ABS



H	W	L [mm]:
80	136	185,5



AVAILABLE COLOUR:



WITH SIDE PANELS



Z98

MATERIAL:
ABS



H	W	L [mm]:
41,45	60,45	120,8



AVAILABLE COLOUR:



WITH SIDE PANELS



Z113

MATERIAL:
ABS



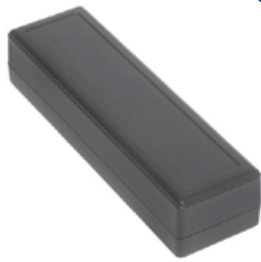
H	W	L [mm]:
25,5	93,1	151



AVAILABLE COLOUR:



TWO-PART



Z115

MATERIAL:
ABS

H	W	L [mm]:
21,5	30	105

AVAILABLE COLOUR:



TWO-PART



Z122

MATERIAL:
ABS

H	W	L [mm]:
24,7	69,1	108,3

AVAILABLE COLOUR:



TWO-PART



Z118

MATERIAL:
ABS

H	W	L [mm]:
18,95	60	97,85

AVAILABLE COLOUR:



TWO-PART



Z122W

MATERIAL:
ABS

H	W	L [mm]:
24,7	69,1	108,3

AVAILABLE COLOUR:



TWO-PART



Z119

MATERIAL:
ABS

H	W	L [mm]:
30,5	63,4	97,5

AVAILABLE COLOUR:



TWO-PART



Z123

MATERIAL:
ABS

H	W	L [mm]:
30,3	75,6	75,8

AVAILABLE COLOUR:



TWO-PART



Z120J

MATERIAL:
ABS

H	W	L [mm]:
75,1	65	129,2

AVAILABLE COLOUR:



FOR POWER SUPPLY



Z125

MATERIAL:
ABS

H	W	L [mm]:
50,5	89,8	189,9

AVAILABLE COLOUR:



TWO-PART



Z121

MATERIAL:
ABS

H	W	L [mm]:
24,2	50,8	149,1

AVAILABLE COLOUR:



FOR REMOTE CONTROL



Z126

MATERIAL:
ABS

H	W	L [mm]:
35,1	69,4	104,5

AVAILABLE COLOUR:



TWO-PART



Z127

NEW

MATERIAL:
ABS

H	W	L [mm]:
41	100	180

AVAILABLE COLOUR:



TWO-PART



Z129

NEW

MATERIAL:
ABS

H	W	L [mm]:
28,5	94,3	117,9

AVAILABLE COLOUR:



WITH A LATCH





Economic line consists of enclosures made of polystyrene. The line is aimed to customers for whom the price has the crucial meaning.

Several dozens of enclosures has been well known since the 80s. They help to reduce the cost of your devices.



Z1

MATERIAL:
PS

H	W	L [mm]:
70	188	198,2

AVAILABLE COLOUR:



WITH SIDE PANELS



Z2W

MATERIAL:
PS

H	W	L [mm]:
70,6	149,1	179,8

AVAILABLE COLOUR:



WITH SIDE PANELS



Z1W

MATERIAL:
PS

H	W	L [mm]:
70	188	198,2

AVAILABLE COLOUR:



WITH SIDE PANELS



Z2AW

MATERIAL:
PS

H	W	L [mm]:
90	147	179,2

AVAILABLE COLOUR:



WITH SIDE PANELS



Z1AW

MATERIAL:
PS

H	W	L [mm]:
134	171,3	177,5

AVAILABLE COLOUR:



WITH SIDE PANELS



Z3

MATERIAL:
PS

H	W	L [mm]:
71	109,9	149,11

AVAILABLE COLOUR:



WITH SIDE PANELS



Z2

MATERIAL:
PS

H	W	L [mm]:
70	149,1	179,8

AVAILABLE COLOUR:



WITH SIDE PANELS



Z3W

MATERIAL:
PS

H	W	L [mm]:
71	109,9	149,11

AVAILABLE COLOUR:



WITH SIDE PANELS



Z3AW

MATERIAL:
PS

H	W	L [mm]:
68	90	110

AVAILABLE COLOUR:



WITH SIDE PANELS



Z5

MATERIAL:
PS

H	W	L [mm]:
40,3	90	109,15

AVAILABLE COLOUR:



WITH SIDE PANELS



Z4

MATERIAL:
PS

H	W	L [mm]:
50	129,7	149,25

AVAILABLE COLOUR:



WITH SIDE PANELS



Z5A

MATERIAL:
PS

H	W	L [mm]:
48,85	90,05	109,7

AVAILABLE COLOUR:



WITH SIDE PANELS



Z4A

MATERIAL:
PS

H	W	L [mm]:
58,65	138,9	159,35

AVAILABLE COLOUR:



WITH SIDE PANELS



Z5B

MATERIAL:
PS

H	W	L [mm]:
49	90,1	200,2

AVAILABLE COLOUR:



WITH SIDE PANELS



Z4W

MATERIAL:
PS

H	W	L [mm]:
49,7	129,6	149,6

AVAILABLE COLOUR:



WITH SIDE PANELS



Z6

MATERIAL:
PS

H	W	L [mm]:
39	91	66

AVAILABLE COLOUR:



WITH SIDE PANELS



Z4AW

MATERIAL:
PS

H	W	L [mm]:
58,65	138,9	159,35

AVAILABLE COLOUR:



WITH SIDE PANELS



Z7

MATERIAL:
PS

H	W	L [mm]:
18,8	68,55	90,75

AVAILABLE COLOUR:



TWO-PART



Z7A

MATERIAL:
PS

H	W	L [mm]:
31,4	54,3	105,4

AVAILABLE COLOUR:
■

TWO-PART



Z9U

MATERIAL:
PS

H	W	L [mm]:
34,5	25,7	62,4 (80,2)

AVAILABLE COLOUR:
■

WITH A LID



Z7B

MATERIAL:
PS

H	W	L [mm]:
23,1	54,3	105,1

AVAILABLE COLOUR:
■

TWO-PART



Z9WU

MATERIAL:
PS

H	W	L [mm]:
25,5	33,75	62,3 (81,2)

AVAILABLE COLOUR:
■ ■

WITH A LID



Z7C

MATERIAL:
PS

H	W	L [mm]:
39,6	54,2	105,4

AVAILABLE COLOUR:
■

TWO-PART



Z10

MATERIAL:
PS

H	W	L [mm]:
52	58	72

AVAILABLE COLOUR:
■

FOR POWER SUPPLY



Z8A

MATERIAL:
PS

H	W	L [mm]:
36,7	34,7	70,3

AVAILABLE COLOUR:
■

WITH A LID



Z10A

MATERIAL:
PS

H	W	L [mm]:
46	53	81

AVAILABLE COLOUR:
■

FOR POWER SUPPLY



Z8U

MATERIAL:
PS

H	W	L [mm]:
35	50	70

AVAILABLE COLOUR:
■ ■

WITH A LID



Z13

MATERIAL:
PS

H	W	L [mm]:
37	47	65

AVAILABLE COLOUR:
■

FOR POWER SUPPLY



Z13A

MATERIAL: PS

H	W	L [mm]:
40	48	72

AVAILABLE COLOUR:



FOR POWER SUPPLY



Z16

MATERIAL: PS

H	W	L [mm]:
62,5 (67,95)	70,5	114,65 (149,8)

AVAILABLE COLOUR:



FOR POWER SUPPLY



Z14

MATERIAL: PS

H	W	L [mm]:
22,7	49,2	149,5

AVAILABLE COLOUR:



FOR REMOTE CONTROL



Z17W

MATERIAL: PS

H	W	L [mm]:
92	217	235

AVAILABLE COLOUR:



WITH SIDE PANELS



Z14A

MATERIAL: ABS

H	W	L [mm]:
13	31	61

AVAILABLE COLOUR:



FOR REMOTE CONTROL



Z18

MATERIAL: PS

H	W	L [mm]:
65	76	176

AVAILABLE COLOUR:



WITH SIDE PANELS



Z14B

MATERIAL: ABS

H	W	L [mm]:
16	38	56

AVAILABLE COLOUR:



FOR REMOTE CONTROL



Z19

MATERIAL: PS

H	W	L [mm]:
25,75	94,55	129,3

AVAILABLE COLOUR:



WITH SIDE PANELS



Z15

MATERIAL: PS

H	W	L [mm]:
90	148	250

AVAILABLE COLOUR:



WITH SIDE PANELS



Z20

MATERIAL: PS

H	W	L [mm]:
53,9	120,4	126,1

AVAILABLE COLOUR:



TWO-PART



Z20A

MATERIAL:
PS

H	W	L [mm]:
59	138	190

AVAILABLE COLOUR:

TWO-PART



Z23B

MATERIAL:
PS

H	W	L [mm]:
38	59	84

AVAILABLE COLOUR:

TWO-PART



Z21

MATERIAL:
PS

H	W	L [mm]:
55	64	82

AVAILABLE COLOUR:

FOR POWER SUPPLY



Z23U

MATERIAL:
PS

H	W	L [mm]:
23,4	59,5	84,9 (106,7)

AVAILABLE COLOUR:

TWO-PART



Z22

MATERIAL:
PS

H	W	L [mm]:
22,3	49,5	65,4

AVAILABLE COLOUR:

TWO-PART



Z23AU

MATERIAL:
PS

H	W	L [mm]:
16,45	59,55	84,6 (106,7)

AVAILABLE COLOUR:

TWO-PART



Z23

MATERIAL:
PS

H	W	L [mm]:
29,9	59,55	84,25

AVAILABLE COLOUR:

TWO-PART



Z24

MATERIAL:
PS

H	W	L [mm]:
37,7	47,3	66,4

AVAILABLE COLOUR:

TWO-PART



Z23A

MATERIAL:
PS

H	W	L [mm]:
23	59,55	84,25

AVAILABLE COLOUR:

TWO-PART



Z24A

MATERIAL:
PS

H	W	L [mm]:
25,2	48,5	67,4

AVAILABLE COLOUR:

TWO-PART



Z24B

MATERIAL:
PS

H	W	L [mm]:
52	47	66

AVAILABLE COLOUR:



TWO-PART



Z27

MATERIAL:
PS

H	W	L [mm]:
46	70	120

AVAILABLE COLOUR:



FOR POWER SUPPLY



Z24U

MATERIAL:
PS

H	W	L [mm]:
30	48	66

AVAILABLE COLOUR:



TWO-PART



Z28

MATERIAL:
PS

H	W	L [mm]:
32,4 (37,85)	118,95	143,2

AVAILABLE COLOUR:



TWO-PART



Z24AU

MATERIAL:
PS

H	W	L [mm]:
15,9	48,85 (66,95)	66,2

AVAILABLE COLOUR:



TWO-PART



Z29

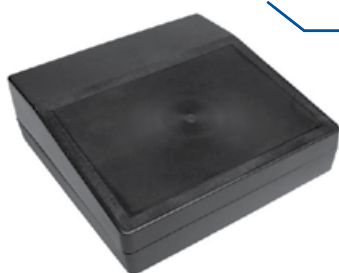
MATERIAL:
PS

H	W	L [mm]:
29 (30,6)	98,5	132,5

AVAILABLE COLOUR:



TWO-PART



Z25

MATERIAL:
PS

H	W	L [mm]:
77,6	218,6	221

AVAILABLE COLOUR:



WITH SIDE PANELS



Z30

MATERIAL:
PS

H	W	L [mm]:
45,3	70,9	120,5

AVAILABLE COLOUR:



FOR POWER SUPPLY



Z26

MATERIAL:
PS

H	W	L [mm]:
60	220	220

AVAILABLE COLOUR:



WITH SIDE PANELS



Z30A

MATERIAL:
PS

H	W	L [mm]:
44	70	120

AVAILABLE COLOUR:



TWO-PART



Z31

MATERIAL:
PS

H	W	L [mm]:
44	70	120

AVAILABLE COLOUR:

TWO-PART



Z33A

MATERIAL:
PS

H	W	L [mm]:
46	140	190

AVAILABLE COLOUR:

FOR POWER SUPPLY



Z32

MATERIAL:
PS

H	W	L [mm]:
26,95	66,3	110,55

AVAILABLE COLOUR:

WITH BATTERY COMPARTMENT



Z33B

MATERIAL:
PS

H	W	L [mm]:
46	140	190

AVAILABLE COLOUR:

TWO-PART



Z32A

MATERIAL:
PS

H	W	L [mm]:
26	59,55	188,65

AVAILABLE COLOUR:

WITH BATTERY COMPARTMENT



Z34

MATERIAL:
PS

H	W	L [mm]:
28,2	67,6	129,3

AVAILABLE COLOUR:

TWO-PART



Z32B

MATERIAL:
PS

H	W	L [mm]:
46	140	190

AVAILABLE COLOUR:

WITH BATTERY COMPARTMENT



Z34U

MATERIAL:
PS

H	W	L [mm]:
24	68	129

AVAILABLE COLOUR:

TWO-PART



Z33

MATERIAL:
PS

H	W	L [mm]:
46,9 (52,35)	139	189

AVAILABLE COLOUR:

TWO-PART



Z34A

MATERIAL:
PS

H	W	L [mm]:
25,3	67,55	129,2

AVAILABLE COLOUR:

TWO-PART



Z34AU

MATERIAL:
PS

H	W	L [mm]:
14,7	67,2	128,9 (150,9)

AVAILABLE COLOUR:



TWO-PART



Z38

MATERIAL:
PS

H	W	L [mm]:
36	84,8	169,7

AVAILABLE COLOUR:



TWO-PART



Z34B

MATERIAL:
PS

H	W	L [mm]:
37,3	67,55	129,2

AVAILABLE COLOUR:



TWO-PART



Z39W

MATERIAL:
PS

H	W	L [mm]:
119,6	218,2	296,8

AVAILABLE COLOUR:



WITH SIDE PANELS



Z35

MATERIAL:
PS

H	W	L [mm]:
52	62	85

AVAILABLE COLOUR:



FOR POWER SUPPLY



Z40W

MATERIAL:
PS

H	W	L [mm]:
79,7	100	179,4

AVAILABLE COLOUR:



WITH SIDE PANELS



Z36

MATERIAL:
PS

H	W	L [mm]:
42	66	125

AVAILABLE COLOUR:



WITH SIDE PANELS



Z41W

MATERIAL:
PS

H	W	L [mm]:
60	63	108

AVAILABLE COLOUR:



SPECIAL, DIFFERENT



Z37

MATERIAL:
PS

H	W	L [mm]:
47 (52,45)	127,8	257,75

AVAILABLE COLOUR:



WITH SIDE PANELS



Z42

MATERIAL:
PS

H	W	L [mm]:
46	56	83

AVAILABLE COLOUR:



FOR POWER SUPPLY

Mounting plate for Waterproof Series enclosures



PLATE FOR ZP150.150.60



PLATE FOR ZP135.135.60



PLATE FOR ZP120.120.60



PLATE FOR ZP105.105.60

Rail for Waterproof Series enclosures



DIN RAIL FOR ZP150.150.60



DIN RAIL FOR ZP135.135.60



DIN RAIL FOR ZP120.120.60



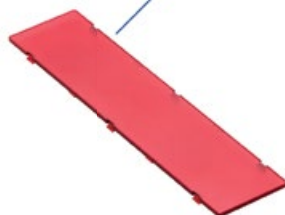
DIN RAIL FOR ZP105.105.60

DIN-R enclosure filter

ZDFp1010 ABS Filter



ZDFcz1010 ABS Filter



ZDFJ1010 ABS V0 Filter



Push button

red button / side



red button / top



white button / side



white button / top



black button / side



black button / top



dial- knob / side



dial- knob / top



LED luminaire

Leda ø 3 / side



Leda ø 3 / top



Leda ø 3 / side



Leda ø 3 / top



Leda ø 5 / side



Leda ø 5 / top



Leda ø 5 / side



Leda ø 5 / top



Screw



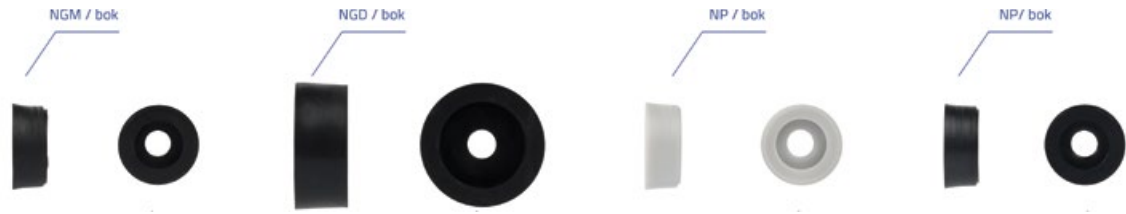
Gasket



Bend protector

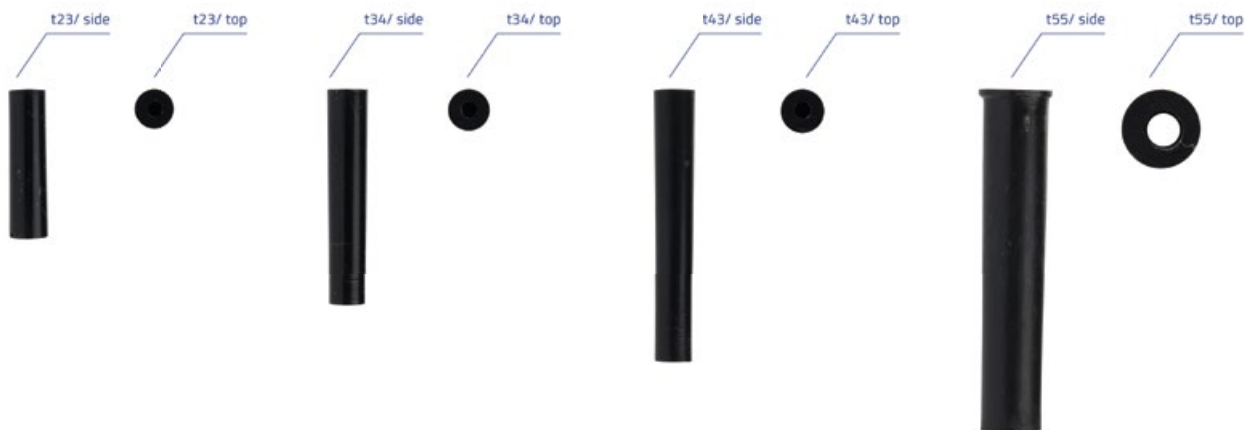


Jig foot



Types of jig feet available: RUBBER, SMALL; RUBBER, LARGE; PLASTIC.

Spacer sleeve



NOTES

A series of horizontal dotted lines for writing notes, spanning the width of the page.

NOTES

A series of horizontal dotted lines for writing notes, spanning the width of the page.

OUR DISTRIBUTORS 





 **КОРПОРАЦІЯ "ТЕХЕКСПО"**
РАДІОЕЛЕКТРОННІ КОМПЛЕКТУЮЧІ,
ПАЯЛЬНЕ ОБЛАДНАННЯ













 (+48 22) 613-08-88  www.kradex.com.pl

 (+48 22) 812-10-68  kradex@kradex.com.pl

 ul. Naddnieprzańska 32, 04-205 Warszawa



 distribution
of electronic
components

X-ON Electronics

Largest Supplier of Electrical and Electronic Components

Click to view similar products for [Enclosures, Boxes & Cases](#) *category:*

Click to view products by [Kradex](#) *manufacturer:*

Other Similar products are found below :

[585-R-WH-PK](#) [M-10-PLATED](#) [60566-01-000](#) [HPL-9VB BATT DOOR](#) [M18-PLTD](#) [M-21-PLATED](#) [63310-01-000](#) [6711GSKT](#)
[71884-29-028](#) [LH45-100 Black](#) [72868-510-000](#) [CNS-0000 Black](#) [72883-510-000](#) [CNS-0101 Black](#) [72906-510-000](#) [CNS-0407 Black](#) [73092-](#)
[510-000](#) [CNM-0101 Black](#) [73105-510-000](#) [CNL-0101 Black](#) [73395-510-039](#) [CNS-0006 Bone](#) [74016-510-000](#) [CNL-0006 Black](#) [74257-510-000](#)
[CNL-0004](#) [MDC-1183-PLAIN-ALUM](#) [MDC-1183-PTD](#) [MDC-13104-PTD](#) [MDC-321-PTD](#) [MDC-973-PTD](#) [76](#) [77153-01-028](#) [FLX6030](#)
[83535-01-508](#) [90026-501-000](#) [PS36-200](#) [116-508](#) [120-407](#) [120-910](#) [127-908](#) [130-008](#) [1301170079](#) [1322GSKTEP](#) [1325GSKT3](#) [138-PLAIN](#)
[1434-1210](#) [EAS-500 \(BLACK ANO\)](#) [1804RP-RB-PK](#) [190-005](#) [2202307](#) [KAB3321 BLACK](#) [KAB3421](#) [2697466](#) [S52213](#) [2901123](#) [2901699](#)
[A0645271](#) [A20P20](#) [2106-IR](#) [PERF-850-PLN](#)