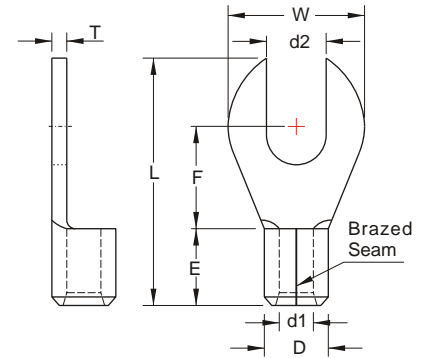


**NON-INSULATED
FORK TERMINALS**



MAXIMUM ELECTRIC CURRENT:

A.W.G.	22	20	18	16	14	12	10	8
AMP.	9	12	17	18	30	35	50	70

TERMINAL MATERIAL: COPPER

WIRE RANGE A.W.G. mm ²	ITEM NO.		STUD SIZE		DIMENSION <small>inch mm</small>						CRIMPING TOOL	Q'TY BOX					
	BRAZED SEAM	BUTTED SEAM	d2		W	F	L	E	D	d1			T				
22-16 A.W.G. 0.5-1.5 mm ²	ANB1-3.2	AN1-3.2	#4	.126 3.0	.127 5.5	.197 5.0	.457 11.6					IZUMI MODEL 5N18 WITH DIE INDEX NO.:1.25 OR K.S. MODEL KST2000D-1322 WITH DIE INDEX NO.:22-18 OR K.S. MODEL KM-70L WITH DIE SET NO.:DIE-1322 WITH DIE INDEX NO.:22-18	1000				
	ANB1-3.7	AN1-3.7	#6	.146 3.7	.260 6.6	.248 6.3	.531 13.5						1000				
	ANB1-4	AN1-4	#8	.169 4.3	.315 8.0	.276 7.0	.583 14.8						1000				
	ANB1-5	AN1-5	#10	.209 5.3			.567 14.4						.189 4.8	.134 3.4	.067 1.7	.030 0.75	1000
	ANB1-6	AN1-6	1/4	.252 6.4	.457 11.6	.433 11.0	.799 20.3						1000				
	ANB1-8	AN1-8	5/16	.331 8.4			.764 19.4						1000				
	ANB1-10 *	AN1-10 *	3/8	.413 10.5	.591 15.0	.496 12.6	.886 22.5						1000				
16-14 A.W.G. 1.5-2.5 mm ²	ANB2-3.2	AN2-3.2	#4	.126 3.2	.260 6.6	.185 4.7	.472 12.0					IZUMI MODEL 5N18 WITH DIE INDEX NO.:2 OR K.S. MODEL KST2000D-1322 WITH DIE INDEX NO.:16-14 OR K.S. MODEL KM-70L WITH DIE SET NO.:DIE-1322 WITH DIE INDEX NO.:16-14	1000				
	ANB2-3.7	AN2-3.7	#6	.146 3.7		.248 6.3	.531 13.5						1000				
	ANB2-4	AN2-4	#8	.169 4.3	.335 8.5	.272 6.9	.626 15.9						1000				
	ANB2-5	AN2-5	#10	.209 5.3	.374 9.5	.291 7.4	.614 15.6						.189 4.8	.161 4.1	.091 2.3	.031 0.8	1000
	ANB2-6	AN2-6	1/4	.252 6.4	.472 12.0	.433 11.0	.807 20.5						1000				
	ANB2-8	AN2-8	5/16	.331 8.4			.776 19.7						1000				
	ANB2-10	AN2-10	3/8	.413 10.5	.591 15.0	.496 12.6	.886 22.5						1000				
12-10 A.W.G. 4-6 mm ²	ANB5-4	AN5-4	#8	.169 4.3	.283 7.2	.228 5.8	.563 14.3					IZUMI MODEL 5N18 WITH DIE INDEX NO.:5.5 OR K.S. MODEL KST2000D-1322 WITH DIE INDEX NO.:12-10 OR K.S. MODEL KM-70L WITH DIE SET NO.:DIE-1322 WITH DIE INDEX NO.:12-10	1000				
	ANB5-5	AN5-5	#10	.209 5.3	.374 9.5	.358 9.1	.732 18.6						1000				
	ANB5-6	AN5-6	1/4	.252 6.4	.472 12.0	.413 10.5	.835 21.2						.236 6.0	.220 5.6	.134 3.4	.039 1.0	1000
	ANB5-8	AN5-8	5/16	.331 8.4	.591 15.0	.531 13.5	1.000 25.4						1000				
	ANB5-10 *	AN5-10 *	3/8	.413 10.5			.965 24.5						1000				
	ANB5-12	AN5-12	1/2	.512 13.0	.756 19.2	.630 16.0	1.146 29.1						1000				
8 A.W.G. 8 mm ²	ANB8-3.7		#6	.146 3.7	.315 8.0	.366 9.3	.807 20.5					IZUMI MODEL 5N18 WITH DIE INDEX NO.:8 OR K.S. MODEL KST2000D-1322 WITH DIE INDEX NO.:8 OR K.S. MODEL KM-70L WITH DIE SET NO.:DIE-1322 WITH DIE INDEX NO.:8	500				
	ANB8-4		#8	.169 3.7			.807 20.5						500				
	ANBL8-4		#8	.169 3.7	.315 8.0	.335 8.5	.925 23.5						.335 8.5	.283 7.2	.177 4.5	.047 1.2	500
	ANB8-5		#10	.209 5.3	.315 8.0	.366 9.3	.807 20.5						500				



ALL LISTED
*: DEVELOPING ON DEMAND

X-ON Electronics

Largest Supplier of Electrical and Electronic Components

Click to view similar products for [Terminals](#) category:

Click to view products by [K.S Terminals](#) manufacturer:

Other Similar products are found below :

[00-054007-01074-6](#) [00-054007-70206-1](#) [00-054007-70210-8](#) [00-054007-70217-7](#) [00-054007-70228-3](#) [00-054007-70256-6](#) [00-054007-70316-7](#) [00-054007-49560-4](#) [00-054007-70209-2](#) [00-054007-70231-3](#) [00-054007-70241-2](#) [00-054007-70242-9](#) [00-054007-70246-7](#) [00-054007-70263-4](#) [00-054007-70288-7](#) [00-054007-70290-0](#) [00-054007-70300-6](#) [00-054007-70304-4](#) [01-2900-1-04412](#) [0190160084](#) [0190350008](#) [600TS-10](#) [605601-1](#) [60617-1-C](#) [61314-6-C](#) [626-0194](#) [63-S](#) [M55155/079C01](#) [M55155/099B03](#) [M55155/109H01](#) [M55155/12XH05](#) [M55155/29XJ08](#) [M55155/30-6S](#) [M55155/30-9S](#) [M55155/30XI09](#) [M6-14RSX](#) [M86700006](#) [D18-110B-C](#) [D18-110B-M](#) [701-1936](#) [701-1955](#) [701-2003](#) [701-2007](#) [701-2013](#) [701-2018](#) [701-2069](#) [701-2077-60](#) [701-2315](#) [701-2430](#) [701-2480](#)