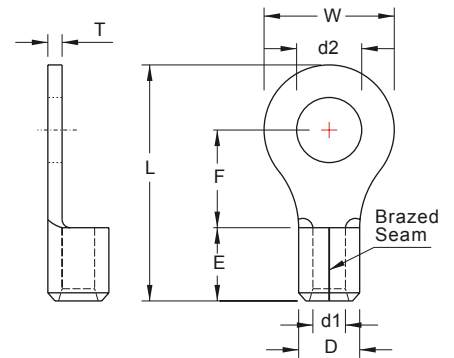


NON-INSULATED RING TERMINALS



MAXIMUM ELECTRIC CURRENT:

A.W.G.	22	20	18	16
AMP.	9	12	17	18

TERMINAL MATERIAL: COPPER
SURFACE TREATMENT: TIN PLATED

WIRE RANGE A.W.G. mm ²	ITEM NO.		STUD SIZE	DIMENSION <small>inch mm</small>							CRIMPING TOOL	Q'TY BOX	
	BRAZED SEAM	BUTTED SEAM	d2	W	F	L	E	D	d1	T			
22-16 A.W.G.	RNB1-2	RN1-2	#2	.087 2.2		.197 5.0	.476 12.1					IZUMI MODEL 5N18 WITH DIE INDEX NO.:1-25 OR K.S. MODEL KST2000D-1322 WITH DIE INDEX NO.:22-18 OR K.S. MODEL KM-70L WITH DIE SET NO.:DIE-1322 WITH DIE INDEX NO.:22-18	1000
	RNB1-2.5	RN1-2.5	#2	.095 2.4	.217 5.5	.189 4.8	.488 12.4						1000
	RNB1-3.2 ■*	RN1-3.2	#4	.126 3.2		.197 5.0	.492 12.5						1000
	RNBL1-3.2	RNL1-3.2	#4	.126 3.2	.315 8.0	.276 7.0	.622 15.8						1000
	RNBS1-3.7 *	RNS1-3.7	#6	.146 3.7	.217 5.5	.197 5.0	.492 12.5						1000
	RNB1-3.7 *	RNM1-3.7	#6	.146 3.7	.260 6.6	.248 6.3	.567 14.4						1000
	RNBL1-3.7 *	RNL1-3.7	#6	.146 3.7	.315 8.0	.276 7.0	.622 15.8						1000
	RNBS1-4 ■*	RNS1-4	#8	.169 4.3	.260 6.6	.248 6.3	.567 14.4						1000
	RNBL1-4 ■*	RNL1-4	#8	.169 4.3	.315 8.0	.276 7.0	.622 15.8						1000
	RNB1-5 ■*	RN1-5	#10	.209 5.3							.030 0.75		1000
0.5-1.5 mm ²	RNBL1-5	RNL1-5	#10	.209 5.3				.189 4.8	.134 3.4	.067 1.7		1000	
	RNB1-6 ■*	RN1-6	1/4	.252 6.4	.457 11.6	.433 11.0	.858 21.8					1000	
	RNB1-7	RN1-7	5/16	.291 7.4								1000	
	RNB1-8 *	RN1-8	5/16	.331 8.4								1000	
	RNBL1-8	RNL1-8	5/16	.331 8.4	.535 13.6	.547 13.9	1.004 25.5					1000	
	RNB1-10 *	RN1-10	3/8	.413 10.5								1000	
	RNBL1-10	RNL1-10	3/8	.413 10.5		.630 16.0	1.197 30.4					1000	
	RNB1-12	RN1-12	1/2	.512 13.0	.756 19.2							1000	
	RNB1-13	RN1-13	17/32	.551 14.0		.543 13.8						1000	
	RNB1-14	RN1-14	9/16	.591 15.0								1000	
RNB1-16	RN1-16	5/8	.669 17.0	1.063 27.0	.827 21.0	1.547 39.3				.031 0.8	1000		
RNB1-20	RN1-20	3/4	.827 21.0								1000		

UL cUL ALL LISTED
* : ADDITIONAL SP CERTIFIED
■ : 90D available

Products can be bend to 90-degrees angle.

X-ON Electronics

Largest Supplier of Electrical and Electronic Components

Click to view similar products for [Terminals](#) category:

Click to view products by [K.S Terminals](#) manufacturer:

Other Similar products are found below :

[00-054007-01074-6](#) [00-054007-70206-1](#) [00-054007-70210-8](#) [00-054007-70217-7](#) [00-054007-70228-3](#) [00-054007-70256-6](#) [00-054007-70316-7](#) [00-054007-49560-4](#) [00-054007-70209-2](#) [00-054007-70231-3](#) [00-054007-70241-2](#) [00-054007-70242-9](#) [00-054007-70246-7](#) [00-054007-70263-4](#) [00-054007-70288-7](#) [00-054007-70290-0](#) [00-054007-70300-6](#) [00-054007-70304-4](#) [01-2900-1-04412](#) [0190160084](#) [0190350008](#) [600TS-10](#) [605601-1](#) [60617-1-C](#) [61314-6-C](#) [626-0194](#) [63-S](#) [M55155/079C01](#) [M55155/099B03](#) [M55155/109H01](#) [M55155/12XH05](#) [M55155/29XJ08](#) [M55155/30-6S](#) [M55155/30-9S](#) [M55155/30XI09](#) [M6-14RSX](#) [M86700006](#) [D18-110B-C](#) [D18-110B-M](#) [701-1936](#) [701-1955](#) [701-2003](#) [701-2007](#) [701-2013](#) [701-2018](#) [701-2069](#) [701-2077-60](#) [701-2315](#) [701-2430](#) [701-2480](#)