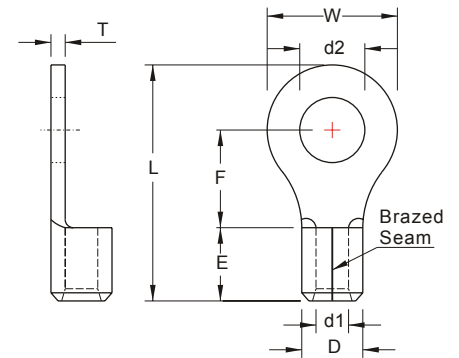


# NON-INSULATED RING TERMINALS



**MAXIMUM ELECTRIC CURRENT:**

A.W.G.	16	14
AMP.	18	30

**TERMINAL MATERIAL: COPPER**

**SURFACE TREATMENT: TIN PLATED**

WIRE RANGE A.W.G. mm <sup>2</sup>	ITEM NO.		STUD SIZE		DIMENSION <small>inch mm</small>						CRIMPING TOOL	Q'TY BOX	
	BRAZED SEAM	BUTTED SEAM		d2	W	F	L	E	D	d1			T
16-14 A.W.G.	RNB2-2	RN2-2	#2	.087 2.2	.260 6.6	.189 4.8	.504 12.8	.189 4.8	.161 4.1	.091 2.3	.031 0.8	IZUMI MODEL <b>5N18</b> WITH DIE INDEX NO.:2  OR  K.S. MODEL <b>KST2000D-1322</b> WITH DIE INDEX NO.:16-14  OR  K.S. MODEL <b>KM-70L</b> WITH DIE SET NO.:DIE-1322 WITH DIE INDEX NO.:16-14	1000
	RNB2-2.5 *	RN2-2.5 *	#3	.098 2.5									
	RNBS2-3.2	RNS2-3.2	#4	.126 3.2	.217 5.5	.220 5.6	.520 13.2						1000
	RNB2-3.2 ■*	RN2-3.2	#4	.126 3.2	.260 6.6	.189 4.8	.504 12.8						1000
	RNBL2-3.2 ■	RNL2-3.2	#4	.126 3.2	.335 8.5	.307 7.8	.661 16.8						1000
	RNBS2-3.7 *	RNS2-3.7	#6	.146 3.7	.260 6.6	.189 4.8	.504 12.8						1000
	RNBM2-3.7 *	RNM2-3.7	#6	.146 3.7		.248 6.3	.567 14.4						1000
	RNBL2-3.7 *	RNL2-3.7	#6	.146 3.7	.335 8.5	.291 7.4	.650 16.5						1000
	RNBS2-4 ■*	RNS2-4	#8	.169 4.3	.260 6.6	.248 6.3	.567 14.4						1000
	RNB2-4	RN2-4	#8	.169 4.3	.335 8.5	.291 7.4	.650 16.5						1000
RNBL2-4 ■*	RNL2-4	#8	.169 4.3	.335 8.5		.650 16.5	1000						
RNBS2-5 ■*	RNS2-5	#10	.209 5.3			.291 7.4	.669 17.0	1000					
1.5-2.5 mm <sup>2</sup>	RNBL2-5 ■*	RNL2-5	#10	.209 5.3	.374 9.5		.669 17.0	1000					
	RNB2-6 ■*	RN2-6	1/4	.252 6.4				1000					
	RNB2-7 *	RN2-7 *	5/16	.291 7.4				.472 12.0	.433 11.0	.858 21.8	1000		
	RNB2-8 ■*	RN2-8	5/16	.331 8.4							1000		
	RNBL2-8	RNL2-8	5/16	.331 8.4							1000		
	RNB2-9	RN2-9	5/16	.386 9.8				.535 13.6	.547 13.9	1.004 25.5	1000		
	RNB2-10 ■*	RN2-10	3/8	.413 10.5							1000		
	RNBL2-10	RNL2-10	3/8	.413 10.5				.756 19.2	.630 16.0	1.197 30.4	1000		
	RNB2-12	RN2-12	1/2	.512 13.0				.756 19.2			1000		
	RNB2-14	RN2-14	9/16	.591 15.0							1000		
RNB2-16	RN2-16	5/8	.669 17.0	1.063 27.0				.827 21.0	1.547 39.3	1000			
RNB2-20	RN2-20	3/4	.827 21.0				1000						



ALL LISTED \* : ADDITIONAL ■ : 90D available \* : DEVELOPING ON DEMAND CERTIFIED

Products can be bend to 90-degrees angle.

## X-ON Electronics

Largest Supplier of Electrical and Electronic Components

*Click to view similar products for [Terminals](#) category:*

*Click to view products by [K.S Terminals](#) manufacturer:*

Other Similar products are found below :

[00-054007-01074-6](#) [00-054007-70206-1](#) [00-054007-70210-8](#) [00-054007-70217-7](#) [00-054007-70228-3](#) [00-054007-70256-6](#) [00-054007-70316-7](#) [00-054007-49560-4](#) [00-054007-70209-2](#) [00-054007-70231-3](#) [00-054007-70241-2](#) [00-054007-70242-9](#) [00-054007-70246-7](#) [00-054007-70263-4](#) [00-054007-70288-7](#) [00-054007-70290-0](#) [00-054007-70300-6](#) [00-054007-70304-4](#) [01-2900-1-04412](#) [0190160084](#) [0190350008](#) [600TS-10](#) [605601-1](#) [60617-1-C](#) [61314-6-C](#) [626-0194](#) [63-S](#) [M55155/079C01](#) [M55155/099B03](#) [M55155/109H01](#) [M55155/12XH05](#) [M55155/29XJ08](#) [M55155/30-6S](#) [M55155/30-9S](#) [M55155/30XI09](#) [M6-14RSX](#) [M86700006](#) [D18-110B-C](#) [D18-110B-M](#) [701-1936](#) [701-1955](#) [701-2003](#) [701-2007](#) [701-2013](#) [701-2018](#) [701-2069](#) [701-2077-60](#) [701-2315](#) [701-2430](#) [701-2480](#)