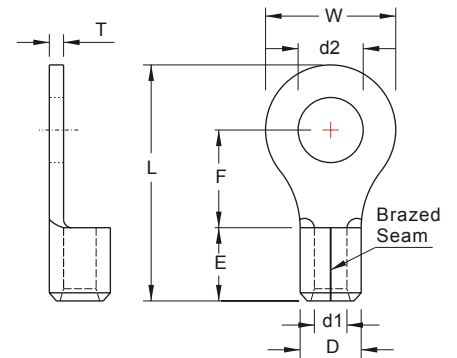


# NON-INSULATED RING TERMINALS



**MAXIMUM ELECTRIC CURRENT:**

A.W.G.	12	10	8
AMP.	35	50	70

**TERMINAL MATERIAL: COPPER**

**SURFACE TREATMENT: TIN PLATED**

WIRE RANGE A.W.G. mm <sup>2</sup>	ITEM NO.		STUD SIZE	DIMENSION <small>inch mm</small>							CRIMPING TOOL	Q'TY BOX	
	BRAZED SEAM	BUTTED SEAM	d2	W	F	L	E	D	d1	T			
12-10 A.W.G.  4-6 mm <sup>2</sup>	RNB5-8 ■ *	RN5-8 ■	5/16	.331 8.4	.591 15.0	.524 13.3	1.055 26.8	.236 6.0	.220 5.6	.134 3.4	.039 1.0	IZUMI MODEL <b>5N18</b> WITH DIE INDEX NO.:5.5  OR K.S. MODEL <b>KST2000D-1322</b> WITH DIE INDEX NO.:12-10  OR K.S. MODEL <b>KM-70L</b> WITH DIE SET NO.:DIE-1322 WITH DIE INDEX NO.:12-10	1000
	RNBS5-10	RNS5-10	3/8	.413 10.5	.591 15.0	.441 11.2	0.972 24.7						1000
	RNB5-10 ■ *	RN5-10	3/8	.413 10.5	.591 15.0	.524 13.3	1.055 26.8						1000
	RNB5-11	RN5-11	7/16	.453 11.5									1000
	RNB5-12 *	RN5-12	1/2	.512 13.0	.756 19.2	.630 16.0	1.244 31.6						500
	RNB5-13	RN5-13	1/2	.551 14.0									500
	RNB5-14	RN5-14	9/16	.591 15.0									500
	RNB5-16	RN5-16	5/8	.669 17.0	1.260 32.0	.992 25.2	1.858 47.2						500
	RNB5-18	RN5-18	11/16	.748 19.0									500
	RNB5-20	RN5-20	3/4	.827 21.0									500
8 A.W.G.  8 mm <sup>2</sup>	RNB8-3.7		#6	.146 3.7	.315 8.0		.846 21.5	.335 8.5	.283 7.2	.177 4.5	.047 1.2	IZUMI MODEL <b>5N18</b> WITH DIE INDEX NO.:8  OR K.S. MODEL <b>KST2000D-1322</b> WITH DIE INDEX NO.:8  OR K.S. MODEL <b>KM-70L</b> WITH DIE SET NO.:DIE-1322 WITH DIE INDEX NO.:8	500
	RNBS8-4 ■		#8	.169 4.3		.366 9.3							500
	RNBL8-4		#8	.169 4.3	.472 12.0		.937 23.8						500
	RNBS8-5 ■		#10	.209 5.3	.346 8.8	.429 10.5	.921 23.4						500
	RNBM8-5 *		#10	.209 5.3	.472 12.0	.366 9.3	.937 23.8						500
	RNBL8-5		#10	.209 5.3	.591 15.0	.543 13.8	1.173 29.8						500
	RNBS8-6 ■ *		1/4	.252 6.4	.472 12.0	.366 9.3	.937 23.8						500
	RNBL8-6 ■		1/4	.252 6.4									500
	RNB8-8 ■ *		5/16	.331 8.4	.591 15.0	.535 13.6	1.150 29.2						500
	RNB8-10 ■ *		3/8	.413 10.5									500
	RNB8-11		7/16	.453 11.5	.787 20.0	.591 15.0	1.319 33.5						500
	RNB8-12 ■		1/2	.512 13.0									500



ALL LISTED

\* : ADDITIONAL CERTIFIED

※ : DEVELOPING ON DEMAND

■ : 90D available

Products can be bend to 90-degrees angle.

## X-ON Electronics

Largest Supplier of Electrical and Electronic Components

*Click to view similar products for [Terminals](#) category:*

*Click to view products by [K.S Terminals](#) manufacturer:*

Other Similar products are found below :

[00-054007-01074-6](#) [00-054007-70206-1](#) [00-054007-70210-8](#) [00-054007-70217-7](#) [00-054007-70228-3](#) [00-054007-70256-6](#) [00-054007-70316-7](#) [00-054007-49560-4](#) [00-054007-70209-2](#) [00-054007-70231-3](#) [00-054007-70241-2](#) [00-054007-70242-9](#) [00-054007-70246-7](#) [00-054007-70263-4](#) [00-054007-70288-7](#) [00-054007-70290-0](#) [00-054007-70300-6](#) [00-054007-70304-4](#) [01-2900-1-04412](#) [0190160084](#) [0190350008](#) [600TS-10](#) [605601-1](#) [60617-1-C](#) [61314-6-C](#) [626-0194](#) [63-S](#) [M55155/079C01](#) [M55155/099B03](#) [M55155/109H01](#) [M55155/12XH05](#) [M55155/29XJ08](#) [M55155/30-6S](#) [M55155/30-9S](#) [M55155/30XI09](#) [M6-14RSX](#) [M86700006](#) [D18-110B-C](#) [D18-110B-M](#) [701-1936](#) [701-1955](#) [701-2003](#) [701-2007](#) [701-2013](#) [701-2018](#) [701-2069](#) [701-2077-60](#) [701-2315](#) [701-2430](#) [701-2480](#)