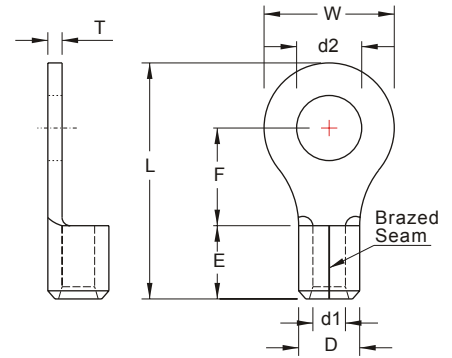


NON-INSULATED RING TERMINALS



MAXIMUM ELECTRIC CURRENT:

A.W.G.	2	1/0
AMP.	170	230

TERMINAL MATERIAL: COPPER
SURFACE TREATMENT: TIN PLATED

WIRE RANGE A.W.G. mm ²	ITEM NO.		STUD SIZE		DIMENSION <small>inch mm</small>						CRIMPING TOOL	Q'TY BOX	
	BRAZED SEAM	BUTTED SEAM	d2	W	F	L	E	D	d1	T			
2 A.W.G. 38 mm ²	RNBS38-10 *		3/8	.413 10.5	.602 15.3	.685 17.4	1.527 38.8	0.551 14.0	0.524 13.3	0.370 9.4	0.71 1.8	IZUMI MODEL 9H-60 (EP-38) WITH DIE INDEX NO.:38 OR K.S. MODEL KH-120 WITH DIE INDEX NO.:35	200
	RNBL38-10		3/8	.413 10.5									200
	RNB38-11		7/16	.453 11.5	.866 22.0	.697 17.7	1.681 42.7						200
	RNB38-12 *		1/2	.512 13.0									200
	RNB38-13		9/16	.551 14.0									200
	RNB38-14		9/16	.591 15.0				.551 14.0	.524 13.3	.370 9.4	.071 1.8		200
	RNB38-16		5/8	.669 17.0									200
	RNB38-18		11/16	.748 19.0	1.181 30.0	.917 23.3	2.047 52.0						200
	RNB38-20		3/4	.827 21.0									200
	RNB38-22		7/8	.906 23.0									200
RNB38-24		15/16	.984 25.0								200		
1/0 A.W.G. 60 mm ²	RNB60-6		1/4	.252 6.4								IZUMI MODEL 9H-2 9H-150 12#A WITH DIE INDEX NO.:60 OR K.S. MODEL KH-120 WITH DIE INDEX NO.:50	100
	RNB60-8 ■		5/16	.331 8.4	.866 22.0	.815 20.7	1.957 49.7						100
	RNB60-10 ■		3/8	.413 10.5									100
	RNBL60-10		3/8	.413 10.5	1.260 32.0	.898 22.8	2.264 57.0						100
	RNB60-11		7/16	.453 11.5	.866 22.0	.815 20.7	1.957 49.7						100
	RNB60-12		1/2	.512 13.0									100
	RNBL60-12		1/2	.512 13.0	1.260 32.0	.898 22.8	2.244 57.0	.709 18.0	.606 15.4	.449 11.4	.071 1.8		100
	RNB60-13		9/16	.551 14.0	.866 22.0	.815 20.7	1.957 49.7						100
	RNB60-14		9/16	.591 15.0									100
	RNB60-16		5/8	.669 17.0									100
	RNB60-18		11/16	.748 19.0	1.260 32.0	.925 23.5	2.264 57.5						100
	RNB60-20		3/4	.827 21.0									100
RNB60-22		7/8	.906 23.0								100		



ALL LISTED
* : ADDITIONAL CERTIFIED

■ : 90D available

Products can be bend to 90-degrees angle.

X-ON Electronics

Largest Supplier of Electrical and Electronic Components

Click to view similar products for [Terminals](#) category:

Click to view products by [K.S Terminals](#) manufacturer:

Other Similar products are found below :

[00-054007-01074-6](#) [00-054007-70206-1](#) [00-054007-70210-8](#) [00-054007-70217-7](#) [00-054007-70228-3](#) [00-054007-70256-6](#) [00-054007-70316-7](#) [00-054007-49560-4](#) [00-054007-70209-2](#) [00-054007-70231-3](#) [00-054007-70241-2](#) [00-054007-70242-9](#) [00-054007-70246-7](#) [00-054007-70263-4](#) [00-054007-70288-7](#) [00-054007-70290-0](#) [00-054007-70300-6](#) [00-054007-70304-4](#) [01-2900-1-04412](#) [0190160084](#) [0190350008](#) [600TS-10](#) [605601-1](#) [60617-1-C](#) [61314-6-C](#) [626-0194](#) [63-S](#) [M55155/079C01](#) [M55155/099B03](#) [M55155/109H01](#) [M55155/12XH05](#) [M55155/29XJ08](#) [M55155/30-6S](#) [M55155/30-9S](#) [M55155/30XI09](#) [M6-14RSX](#) [M86700006](#) [D18-110B-C](#) [D18-110B-M](#) [701-1936](#) [701-1955](#) [701-2003](#) [701-2007](#) [701-2013](#) [701-2018](#) [701-2069](#) [701-2077-60](#) [701-2315](#) [701-2430](#) [701-2480](#)