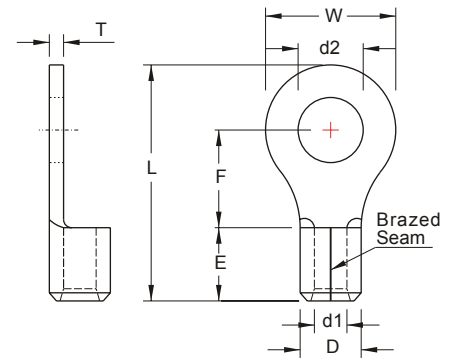


NON-INSULATED RING TERMINALS



MAXIMUM ELECTRIC CURRENT:

A.W.G.	4	2
AMP.	125	170

TERMINAL MATERIAL: COPPER

SURFACE TREATMENT: TIN PLATED

WIRE RANGE A.W.G. mm ²	ITEM NO.		STUD SIZE		DIMENSION <small>inch mm</small>							CRIMPING TOOL	Q'TY BOX				
	BRAZED SEAM	BUTTED SEAM	d2		W	F	L	E	D	d1	T						
4 A.W.G. 22 mm ²		RNB22-4	#8	.169 4.3													250
		RNBS22-5 ■	#10	.209 5.3	.480 12.2	.594 15.1	1.307 33.2										250
		RNBL22-5	#10	.209 5.3	.650 16.5	.531 13.5	1.319 33.5										250
		RNBS22-6 ■	1/4	.252 6.4	.480 12.2	.594 15.1	1.299 33.0										250
		RNBL22-6 ■*	1/4	.252 6.4	.650 16.5	.531 13.5	1.319 33.5										250
		RNBS22-8	5/16	.331 8.4	.480 12.2	.594 15.1	1.307 33.2										250
		RNB22-8 ■*	5/16	.331 8.4	.650 16.5	.531 13.5	1.319 33.5										250
		RNB22-10 *	3/8	.413 10.5	.689 17.5	.630 16.0	1.445 36.7	.465 11.8	.453 11.5	.303 7.7	.067 1.7						250
		RNBL22-10	3/8	.413 10.5	.689 17.5	.630 16.0	1.445 36.7	.465 11.8	.453 11.5	.303 7.7	.067 1.7						200
		RNB22-11	7/16	.453 11.5	.866 22.0	.776 19.7	1.673 42.5										200
		RNB22-12	1/2	.512 13.0													200
		RNB22-14	9/16	.591 15.0													200
		RNB22-16	5/8	.669 17.0													200
		RNB22-18	11/16	.748 19.0	1.181 30.0	.953 24.2	2.008 51.0										200
	RNB22-20	3/4	.827 21.0													200	
	RNB22-22	7/8	.906 23.0													200	
2 A.W.G. 38 mm ²		RNB38-5	#10	.209 5.3	.602 15.3	.685 17.4	1.535 39.0										200
		RNBS38-6 ■*	1/4	.252 6.4	.866 22.0	.697 17.7	1.681 42.7	.551 14.0	.524 13.3	.370 9.4	.071 1.8						200
		RNBL38-6	1/4	.252 6.4	.866 22.0	.697 17.7	1.681 42.7	.551 14.0	.524 13.3	.370 9.4	.071 1.8						200
		RNBS38-8 ■*	5/16	.331 8.4	.602 15.3	.685 17.4	1.535 39.0										200
		RNBL38-8 ■	5/16	.331 8.4	.866 22.0	.697 17.7	1.681 42.7										200



ALL LISTED

* : ADDITIONAL CERTIFIED

■ : 90D available

Products can be bend to 90-degree angle.

X-ON Electronics

Largest Supplier of Electrical and Electronic Components

Click to view similar products for [Terminals](#) category:

Click to view products by [K.S Terminals](#) manufacturer:

Other Similar products are found below :

[00-054007-01074-6](#) [00-054007-70206-1](#) [00-054007-70210-8](#) [00-054007-70217-7](#) [00-054007-70228-3](#) [00-054007-70256-6](#) [00-054007-70316-7](#) [00-054007-49560-4](#) [00-054007-70209-2](#) [00-054007-70231-3](#) [00-054007-70241-2](#) [00-054007-70242-9](#) [00-054007-70246-7](#) [00-054007-70263-4](#) [00-054007-70288-7](#) [00-054007-70290-0](#) [00-054007-70300-6](#) [00-054007-70304-4](#) [01-2900-1-04412](#) [0190160084](#) [0190350008](#) [600TS-10](#) [605601-1](#) [60617-1-C](#) [61314-6-C](#) [626-0194](#) [63-S](#) [M55155/079C01](#) [M55155/099B03](#) [M55155/109H01](#) [M55155/12XH05](#) [M55155/29XJ08](#) [M55155/30-6S](#) [M55155/30-9S](#) [M55155/30XI09](#) [M6-14RSX](#) [M86700006](#) [D18-110B-C](#) [D18-110B-M](#) [701-1936](#) [701-1955](#) [701-2003](#) [701-2007](#) [701-2013](#) [701-2018](#) [701-2069](#) [701-2077-60](#) [701-2315](#) [701-2430](#) [701-2480](#)