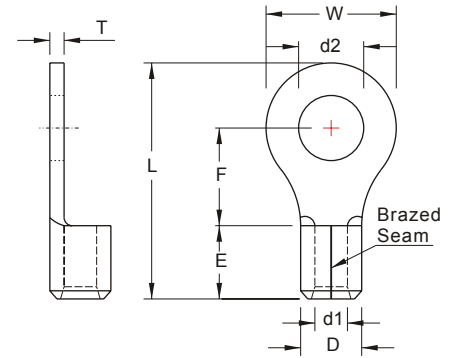


NON-INSULATED RING TERMINALS



MAXIMUM ELECTRIC CURRENT:

A.W.G.	14	12	10
AMP.	30	35	50

TERMINAL MATERIAL: COPPER
SURFACE TREATMENT: TIN PLATED

WIRE RANGE A.W.G. mm ²	ITEM NO.		STUD SIZE	DIMENSION <small>inch mm</small>							CRIMPING TOOL	Q'TY BOX		
	BRAZED SEAM	BUTTED SEAM		d2	W	F	L	E	D	d1			T	
14-12 A.W.G.	RNBS3-3.2	RNS3-3.2	#4	.126 3.2	.217 5.5		.661 16.8	.236 6.0	.201 5.1	.114 2.9	.039 1.0	IZUMI MODEL 5N18 WITH DIE INDEX NO.:5.5 OR K.S. MODEL KST2000D-1322 WITH DIE INDEX NO.:12-10 OR K.S. MODEL KM-70L WITH DIE SET NO:DIE-1322 WITH DIE INDEX NO.:12-10	1000	
	RNB3-3.2 ■	RN3-3.2	#4	.126 3.2	.315 8.0		.709 18.0						1000	
	RNBS3-4	RNS3-4	#8	.169 4.3	.283 7.2	.315 8.0	.693 17.6						1000	
	RNB3-4 ■	RN3-4	#8	.169 4.3	.315 8.0		.709 18.0						1000	
	RNBS3-5	RNS3-5	#10	.209 5.3									1000	
	RNBM3-5	RNM3-5	#10	.209 5.3	.374 9.5	.362 9.2	.787 20.0						1000	
	RNBL3-5	RNL3-5	#10	.209 5.3	.472 12.0	.370 9.4	.843 21.4						1000	
	RNB3-6	RN3-6	1/4	.252 6.4									1000	
	RNB3-8	RN3-8	5/16	.331 8.4	.591 15.0	.524 13.3	1.063 27.0						1000	
	RNB3-10	RN3-10	3/8	.413 10.5									1000	
2.5-4 mm ²	RNB3-12	RN3-12	1/2	.512 13.0	.756 19.2	.630 16.0	1.244 31.6	1000						
	12-10 A.W.G.	RNB5-3.2 ■	RN5-3.2	#4	.126 3.2	.283 7.2	.228 5.8	.610 15.5	.236 6.0	.220 5.6	.134 3.4	.039 1.0	IZUMI MODEL 5N18 WITH DIE INDEX NO.:5.5 OR K.S. MODEL KST2000D-1322 WITH DIE INDEX NO.:12-10 OR K.S. MODEL KM-70L WITH DIE SET NO:DIE-1322 WITH DIE INDEX NO.:12-10	1000
		RNB5-3.7 ■*	RN5-3.7	#6	.146 3.7		.240 6.1	.618 15.7						1000
		RNBL5-3.7	RNL5-3.7	#6	.146 3.7	.374 9.5	.327 8.3	.748 19.0						1000
		RNBS5-4 ■*	RNS5-4	#8	.169 4.3	.283 7.2	.240 6.1	.618 15.7						1000
		RNBL5-4 ■*	RNL5-4	#8	.169 4.3	.374 9.5	.327 8.3	.748 19.0						1000
		RNB5-5 ■*	RN5-5 ■	#10	.209 5.3	.374 9.5	.327 8.3	.748 19.0						1000
		RNBL5-5	RNL5-5	#10	.209 5.3	.488 12.4	.496 12.6	.976 24.8						1000
		RNB5-6 ■*	RN5-6 ■	1/4	.252 6.4		.413 10.5	.886 22.5						1000
		RNBM5-6	RNM5-6	1/4	.252 6.4	.472 12.0	.512 13.0	.984 25.0						1000
RNB5-7		RN5-7	5/16	.291 7.4		.413 10.5	.878 22.3	1000						
4-6 mm ²	RNBS5-8 ※	RNS5-8 ※	5/16	.331 8.4	.591 15.0	.441 11.2	.972 24.7	1000						

UL cUL ALL LISTED

* : ADDITIONAL SF CERTIFIED

※ : DEVELOPING ON DEMAND

■ : 90D available

Products can be bend to 90-degrees angle.

X-ON Electronics

Largest Supplier of Electrical and Electronic Components

Click to view similar products for [Terminals](#) category:

Click to view products by [K.S Terminals](#) manufacturer:

Other Similar products are found below :

[00-054007-01074-6](#) [00-054007-70206-1](#) [00-054007-70210-8](#) [00-054007-70217-7](#) [00-054007-70228-3](#) [00-054007-70256-6](#) [00-054007-70316-7](#) [00-054007-49560-4](#) [00-054007-70209-2](#) [00-054007-70231-3](#) [00-054007-70241-2](#) [00-054007-70242-9](#) [00-054007-70246-7](#) [00-054007-70263-4](#) [00-054007-70288-7](#) [00-054007-70290-0](#) [00-054007-70300-6](#) [00-054007-70304-4](#) [01-2900-1-04412](#) [0190160084](#) [0190350008](#) [600TS-10](#) [605601-1](#) [60617-1-C](#) [61314-6-C](#) [626-0194](#) [63-S](#) [M55155/079C01](#) [M55155/099B03](#) [M55155/109H01](#) [M55155/12XH05](#) [M55155/29XJ08](#) [M55155/30-6S](#) [M55155/30-9S](#) [M55155/30XI09](#) [M6-14RSX](#) [M86700006](#) [D18-110B-C](#) [D18-110B-M](#) [701-1936](#) [701-1955](#) [701-2003](#) [701-2007](#) [701-2013](#) [701-2018](#) [701-2069](#) [701-2077-60](#) [701-2315](#) [701-2430](#) [701-2480](#)