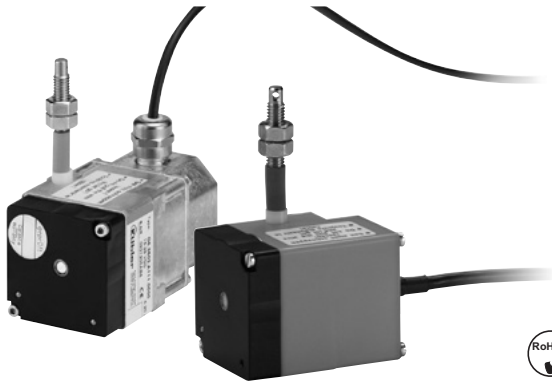


Linear measuring technology

Draw wire mechanics with analog sensor

**Draw wire encoder A40, 1 m
Draw wire encoder A41, 2 m**

**Measuring length max. 2 m
Traverse speed max. 1 m/s**



The draw wire encoders A40 and A41 with analog output is characterized by its compact design. They are available with a potentiometer, voltage or current output.



Analog output

Compact and simple

- Measuring length up to 2000 mm.
- For applications with a low traversing speed.
- Easy to install.

Order code draw wire encoder

D5.350X . AXX . 0000
Type a b c

a Measuring range

- 1 = 1000 mm
- 2 = 2000 mm

b Output circuit

- 11 = analog output 4 ... 20 mA
- 22 = analog output 0 ... 10 V DC power supply 15 ... 28 V DC
- 33 = potentiometer output 10 kΩ

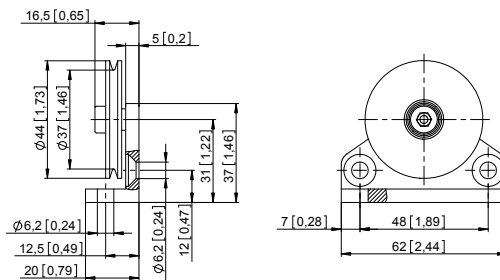
c Type of connection

- 1 = cable 2 m [6.56'] for measuring range 1000 mm: axial for measuring range 2000 mm: radial
- 2 = radial M12 connector, 4-pin (only available for measuring range 2000 mm)

Accessories for draw wire encoder

Order no.

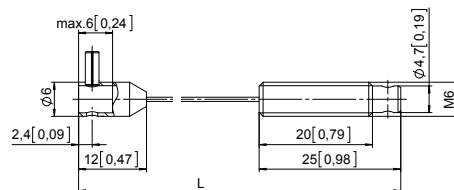
Guide pulley



- Order code for the set:
- Guide pulley (anodized aluminum)
 - 2 x countersunk screws for lateral fixing
 - 2 x hexagonal screws for fixing on a flat surface

8.0000.7000.0045

Extension cable



- Steel wire 2 m [6.56']
- Steel wire 5 m [16.40']
- Steel wire 10 m [32.81']
- Paraleine 2 m [6.56']

8.0000.7000.0033
8.0000.7000.0034
8.0000.7000.0035
8.0000.7000.0032

Linear measuring technology

Draw wire mechanics with analog sensor	Draw wire encoder A40, 1 m Draw wire encoder A41, 2 m	Measuring length max. 2 m Traverse speed max. 1 m/s
---	--	--

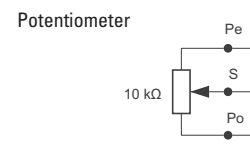
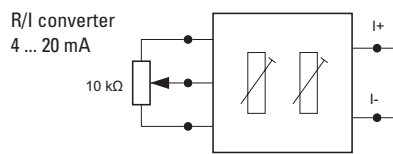
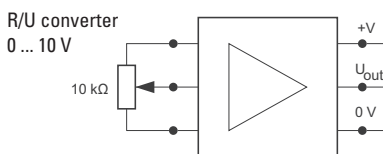
Technical data

Mechanical characteristics (draw wire mechanics)		
Measuring range	1000 mm (A40)	2000 mm (A41)
Speed max.	0.8 m/s	1 m/s
Working temperature	0°C ... 50°C [+32°F ... +122°F]	-10°C ... +80°C [+14°F ... +176°F]
Protection (sensor) acc. to EN 60529	IP50	IP65
Weight	approx. 200 g [7.06 oz]	approx. 320 g [11.29 oz]
Extension force F_{min}	2 N	
Repeat accuracy	±0.15 mm	
Linearity	±0.35 %	
Material	housing: plastic / zinc die-cast	wire: stainless-steel \varnothing 0.45 mm plastic-coated

Electrical characteristics			
Analog output	0 ... 10 V	4 ... 20 mA	potentiometer 10 k Ω
Power supply	15 ... 28 V DC	–	–
Operating range	–	15 ... 28 V DC	max. 48 V DC
Temperature range	0°C ... 50°C [+32°F ... +122°F]	0°C ... 50°C [+32°F ... +122°F]	0°C ... 50°C [+32°F ... +122°F]
Load	max. 500 Ω	max. 500 Ω	–
CE compliant acc. to	EMC guideline 2014/30/EU RoHS guideline 2011/65/EU		

Terminal assignment

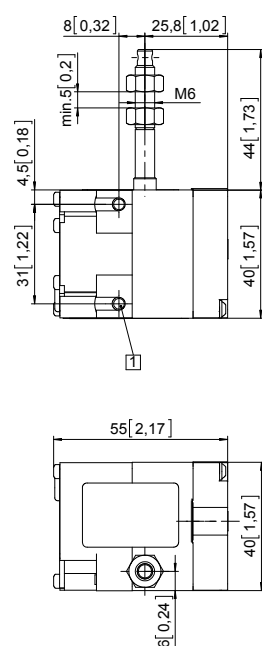
Color	BN	WH	GN	
Pin M12	1	2	3	4
0 ... 10 V	+ 24 V DC	0 V	U_{out}	n.c.
0 ... 20 mA	I+	I-	n.c.	n.c.
Potentiometer	Po	Pe	S	n.c.



Dimensions

Dimensions in mm [inch]

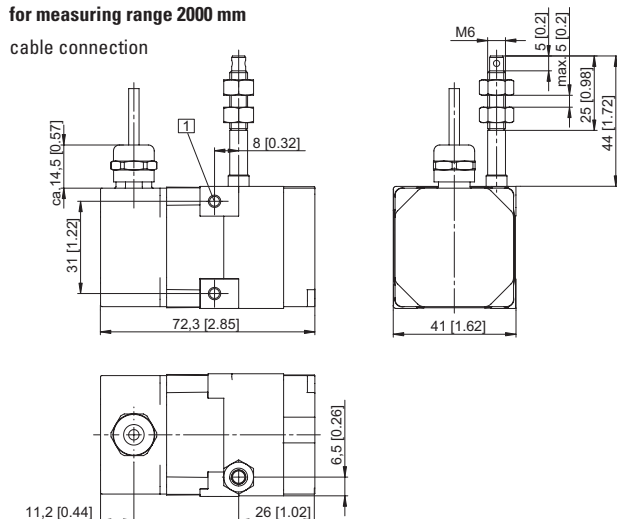
for measuring range 1000 mm



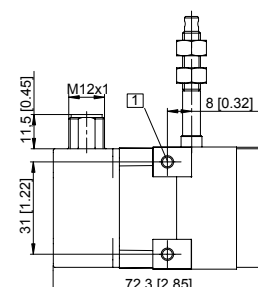
1 2 x M4, max. screw-in depth 8 mm [0.32"]

for measuring range 2000 mm

cable connection



M12 connector



X-ON Electronics

Largest Supplier of Electrical and Electronic Components

Click to view similar products for [Encoders](#) category:

Click to view products by [Kubler](#) manufacturer:

Other Similar products are found below :

[6-1393048-5](#) [62AG22-H5-P](#) [62B22-LP-030C](#) [62D22-02-P](#) [62R22-01-040S](#) [63K25](#) [63K32](#) [63KS100](#) [63KS64](#) [63R100](#) [63R50-020](#) [63RS256-060](#) [700-09-36](#) [E6C2-CWZ6C-10 500P/R 5M](#) [E6C3-CWZ5GH 1000P/R 2M](#) [25LB22-G-Z](#) [T101-5C2-111-M1](#) [T101-5C3-111-M1](#) [T101-5C4-111-M1](#) [25LB45-Q-Z](#) [HEDS-8905](#) [385001M0439](#) [385001M0216](#) [DPL12SV2424A25K3](#) [E69-1](#) [E69-DF15](#) [E69-FBA-02](#) [E69-FCA](#) [E6B2-CWZ1X 2000P/R 0.5M](#) [E6B2-CWZ3E 600P/R 0.5M](#) [E6C3-CWZ3EH 800P/R 2M](#) [ENA1D-472-L00050L](#) [61S64-2](#) [62B11-LP-100S](#) [62B11-LPP-P](#) [62C1111-02-020C](#) [62N11-P](#) [62S22-H9-120S](#) [62S30-L0-200C](#) [62V15-02-080S](#) [62V22-02-030C](#) [632911-128](#) [63K64](#) [63KS100-040](#) [63R64-050](#) [63RS256](#) [63RS64](#) [700-16-16](#) [3-1393048-1](#) [63KS128](#)