

## MODULAR JACKS AND PLUGS: GMX-SMT2 Series

### Surface Mount Modular Jack

#### Product Features

Low Profile Design Suitable for PC Add-On Board Applications  
 Available in 4, 6, 8, and 10 Position Housings  
 Available Fully Shielded for EMI/RFI Protection  
 CSA/NRTL Certified File No. LR78160  
 UL File No. E134345

#### Performance Specifications

##### Materials and Finish

##### Housing Material

High Temperature Thermoplastic, Reflow Compatible,  
 UL 94V-0 Rated, Black Color

##### Shield Material

Copper Alloy, Nickel Plated

##### Contact Material

Phosphor Bronze

#### Electrical Characteristics

##### Insulation Resistance

500 Megohms Min.

##### Dielectric Withstanding Voltage

1000V RMS, 60Hz

##### Contact Resistance

20 milliohms Max.

##### Current Rating

1.0A

##### Voltage Rating

125V DC

##### Operating Temperature

-40°C to +85°C

##### Durability

1000 Mating Cycles Min.

2D Drawing	IGES	STEP	3D PDF
Solder Profile	CofC RoHS Compliant	CofC REACH Compliant	UL Plastic File
Certificate of Origin	Check Stock	Request a Sample	Send Us An Email

Generated Part Number

#### Part Number Builder

<input type="text"/>	-	<input type="text"/>	<input type="text"/>	<input type="text"/>	<input type="text"/>
Series		Shield Option	No. of Positions & Contacts	Plating Options	Packaging Options

#### Series

GMX-SMT2 - Surface Mount Right Angle Modular Jack with Post

#### Shield Options

- N - Non-Shielded
- S - Shielded with Thru Hole Shield Pins
- S2 - Shielded with SMT Shield Tabs (only with 66, 88 and 1010)
- S6 - Shielded with Top and Side Grounding Tabs, SMT Shield Pins (Available only with 8 Positions)
- S7 - Fully Shielded with Top and Side Grounding Tabs, Thru Hole Shield (Available only with 8 Positions)

#### Number of Positions / Contacts

- 44 - 4 Positions / 4 Contacts (Only N Option)
- 64 - 6 Positions / 4 Contacts
- 66 - 6 Positions / 6 Contacts
- 88 - 8 Positions / 8 Contacts
- 1010 - 10 Positions / 10 Contacts

#### Plating Option

- Blank - Gold Flash
- 50 - 50µ" Gold Plating

#### Packaging Option

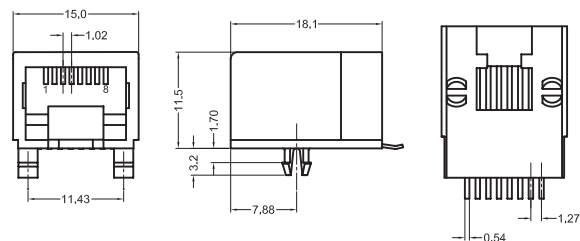
- Blank - Bulk
- TR - Tape & Reel

Contact Kycon for Other Options

#### GMX-SMT2 Series

Dimensions in mm

#### GMX-SMT2-N-88



## X-ON Electronics

Largest Supplier of Electrical and Electronic Components

*Click to view similar products for [Modular Connectors](#) / [Ethernet Connectors](#) category:*

*Click to view products by [Kycon](#) manufacturer:*

Other Similar products are found below :

[8949-H88/06BLKA/SN](#) [74441-0010/BKN](#) [MP1010RX-1000](#) [MP44RX-1000](#) [PHP-6P6C-5](#) [GAX-3-66](#) [GAX-8-62](#) [GDCX-PA-66-50](#) [GDCX-PN-64](#) [GDCX-PN-66](#) [GDCX-PN-66-50](#) [GDLX-A-66](#) [GDLX-N-66](#) [GDLX-S-66](#) [GDLX-S-88K](#) [GDTX-S-88-50](#) [GDX-PA-1010](#) [GLX-N-1010M-BLK](#) [GLX-S-88M-BLK](#) [GMX-N-1010](#) [GMX-S-1010](#) [GMX-S-66](#) [GMX-SMT4-N-88](#) [GPX-2-64](#) [GSGX-N-2-88](#) [GSGX-N-4-88](#) [GSX-NS2-88-3.05](#) [GSX-NS2-88-3.05-50](#) [GSX-NS-88-3.05-50](#) [GSX-NS-88-3.68](#) [PT-108A-8C-UL](#) [PT-J951-8C](#) [PTS-J531-8CS-50UL](#) [1-1775629-2](#) [A-2014-0-4](#) [GWLX-S-88-GR](#) [GWLX-S9-88-YG](#) [DC-1021-8-WH-6](#) [1300530003](#) [1324640-4](#) [RJ11FTVC2G](#) [RJ11FTVC2N](#) [RJFTVX2SA1G](#) [132764-001](#) [1413235](#) [MP88X-1000](#) [MPS88RX-5000](#) [MRJR-5481-0F2](#) [E5288-S000K3-L](#) [E5908-15A242-L](#)