

RoHS



## GSGX/GSGXHT Series Right Angle Ganged Jack

### Features



- Available in up to 12 Ports
- Available Fully Shielded for Category 5 Applications
- Reflow Compatible Through Hole Design
- CSA/NRTL Certified File No. LR78160

## Performance Specifications

### Materials and Finish

#### Housing Material

GSGX - PBT Thermoplastic, Glass Filled, UL 94V-0 Rated,  
Black Color

GSGXHT - High Temperature Thermoplastic, UL 94V-0 Rated,  
Black Color

#### Shield Material

Copper Alloy, Nickel Plated

#### Contact Material

Phosphor Bronze

### Electrical Characteristics

#### Insulation Resistance

500 Megohms Min.

#### Dielectric Withstanding Voltage

1000V RMS, 60 Hz

#### Contact Resistance

20 milliohms Max.

#### Current Rating

1.5A

#### Voltage Rating

125V DC

#### Operating Temperature

-40°C to +85°C

#### Durability

500 Mating Cycles Min.

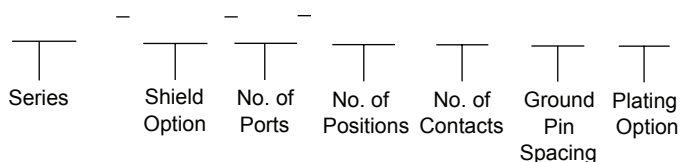
## MODULAR JACKS AND PLUGS

### GSGX/GSGXHT Series

#### Documentation & Ordering Information


#### Kycon Part #

#### Part Number Builder



#### Series

GSGX - Right Angle Ganged Jack

GSGXHT - High Temperature Right Angle Ganged Jack

#### Shield Options

N - Non-Shielded

NS - Shielded

#### Number of Ports

2 - 2 Port

4 - 4 Port

5 - 5 Port

6 - 6 Port

8 - 8 Port

10 - 10 Port

12 - 12 Port

#### Number of Positions/Contacts

88 - 8 Positions / 8 Contacts

#### Ground Pin Spacing (Shielded Only)

Blank - 3.68 mm Ground Pin Spacing

4.57 - 4.57mm Ground Pin Spacing

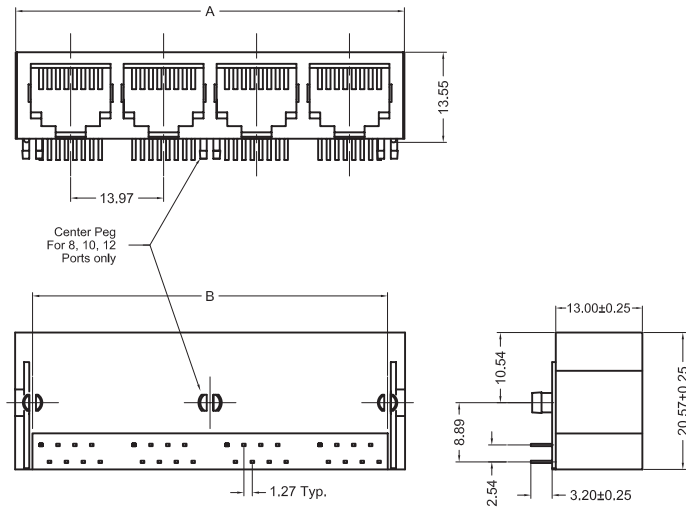
#### Plating Option

Blank - Standard

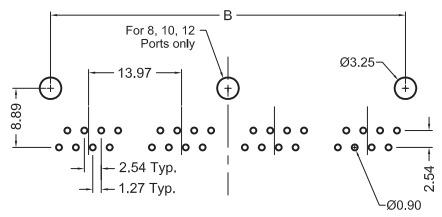
50 - 50µ" Gold Plating

\*See next page for dimensions

**GSGX-N-x-88**  
Dimensions in mm



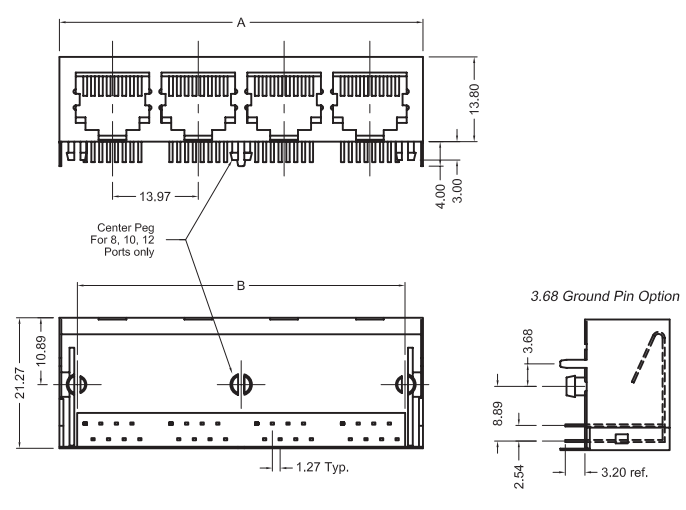
Recommended PCB Layout (Top View)



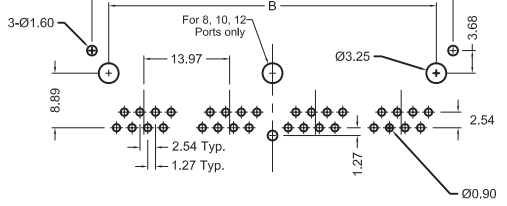
Dimensions			
	mm		
# of Ports	A	B	Style of Board Peg
2	30.48	25.40	Snap-In
4	58.42	53.34	Snap-In
5	72.39	67.31	Diamond*
6	86.36	81.28	Snap-In
8	114.30	109.22	Snap-In
10	142.24	137.16	Diamond**
12	170.18	165.10	Diamond**

\*Snap-In available with min. quantity. Contact Kycon  
\*\*Outer pegs are diamond, center peg is snap-in style

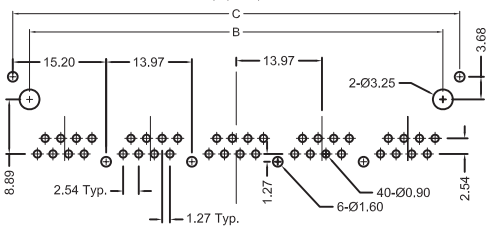
**GSGX-NS-x-88**  
Dimensions in mm



Recommended PCB Layout (Top View)



Special PCB Layout for GSGX-NS-5-88 (Top View)



Dimensions (mm)				
# of Ports	A	B	C	Style of Board Peg
2	31.12	25.40	30.87	Snap-In***
4	59.06	53.34	58.81	Snap-In***
5	73.03	67.31	72.78	Diamond*
6	87.00	81.28	86.75	Snap-In***
8	114.94	109.22	114.69	Snap-In***
10	142.88	137.16	142.63	Diamond**
12	170.82	165.10	170.57	Diamond**

\*Snap-In available with min. quantity. Contact Kycon  
\*\*Outer pegs are diamond, center peg is snap-in style  
\*\*\* 4.57 Ground Pin option available

## X-ON Electronics

Largest Supplier of Electrical and Electronic Components

*Click to view similar products for [Modular Connectors](#) / [Ethernet Connectors](#) category:*

*Click to view products by [Kycon](#) manufacturer:*

Other Similar products are found below :

[8949-H88/06BLKA/SN](#) [74441-0010/BKN](#) [MP1010RX-1000](#) [MP44RX-1000](#) [PHJ-4P4C-1-V-4](#) [PHP-6P6C-5](#) [GAX-3-66](#) [GAX-8-62](#) [GDCX-PA-66-50](#) [GDCX-PN-64](#) [GDCX-PN-66](#) [GDCX-PN-66-50](#) [GDLX-A-66](#) [GDLX-N-66](#) [GDLX-S-66](#) [GDLX-S-88K](#) [GDTX-S-88-50](#) [GDX-PA-1010](#) [GLX-N-1010M-BLK](#) [GLX-S-88M-BLK](#) [GMX-N-1010](#) [GMX-S-1010](#) [GMX-S-66](#) [GMX-SMT4-N-88](#) [GPX-2-64](#) [GSGX-N-2-88](#) [GSGX-N-4-88](#) [GSX-NS2-88-3.05](#) [GSX-NS2-88-3.05-50](#) [GSX-NS-88-3.68](#) [PT-108A-8C-UL](#) [PT-J951-8C](#) [PTS-J531-8CS-50UL](#) [1-1775629-2](#) [A-2014-0-4](#) [GWLX-S-88-GR](#) [GWLX-S9-88-YG](#) [DC-1021-8-WH-6](#) [1300530003](#) [1324640-4](#) [RJ11FTVC2G](#) [RJ11FTVC2N](#) [RJFTVX2SA1G](#) [132764-001](#) [1413235](#) [MP88X-1000](#) [MPS88RX-5000](#) [MRJR-5481-0F2](#) [E5288-S000K3-L](#) [E5908-15A242-L](#)