

K99 Series IDC Termination D-Subminiature

Features



- Applications Include Computer Peripherals, Data Processing, Telecommunications, Industrial Controls and Local Area Networks
- Bright Tin Shells for Exceptional Conductivity, Grounding and EMI/RFI Shielding
- Indentations (Dimples) on Metal Plug Shells for Exceptional Grounding and Mating Retention
- Plastic Strain Relief Available Separately
- Flat Cable can be Connected to a Single Connector or Daisy Chained.
- Automatic Assembly Machine Compatible
- Design Meets the Requirements of MIL-C-24308, EIA RS-232 and RS-449.

Performance Specifications

Materials and Finish

Shell

K99 Series: Steel Material, Tin Finish
SR Series: PBT Thermoplastic



Contact Material

Pin: Brass .040 (1.02) Diameter
Socket: Phosphor Bronze

Contact Finish

0.000005 (0.000127) Gold on Contact Wiping Area, All Other Areas are 0.0001 (0.00254) Tin Over 0.0001 (0.00254) Nickel

Riveted Insert

Brass Material, Nickel Finish

D-SUBMINIATURE CONNECTORS

K99 Series

Mechanical Characteristics

Contact Separation Force

4 Oz. Min

Contact Engagement Force

9 Oz. Min

Electrical Characteristics

Contact Current Rating

1 Amp

Contact Resistance

8 Milliohms Max

Dielectric Withstanding Voltage

1000 V AC Min

Insulation Resistance

1000 Megohms Min

Temperature Rating

-55°C to +125°C

Wire Accommodation

Flat Cable or Discrete Wire 26 or 28 AWG Stranded or Solid, and 30 AWG Solid Wires on .050 (1.27) Centers

Ordering Information: Connector

| | | | | | | | |
|--|---|--------------------|--------------|---|------------------|---|---------------|
| K99 | - | 25 | S | - | K | - | BLK |
| Series | | Number of Contacts | Contact Type | | Mounting Options | | Color Options |
| Series | | | | | | | |
| K99 - KYCON IDC D-Subminiature Connector, Metal Construction | | | | | | | |
| Number of Contacts | | | | | | | |
| 9, 15, 25, 37 | | | | | | | |
| Contact Type | | | | | | | |
| P - Pin Contact (Plug) S - Socket Contact (Receptacle) | | | | | | | |
| Mounting Options | | | | | | | |
| K - With Riveted Threaded (4-40) Bushing Blank - No Mounting Hardware | | | | | | | |
| Color Option | | | | | | | |
| BLU: Blue Color BLK: Black Color | | | | | | | |

Ordering Information: Strain Relief

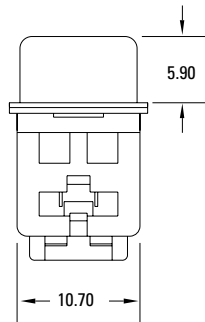
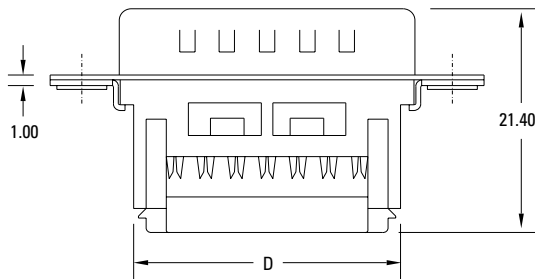
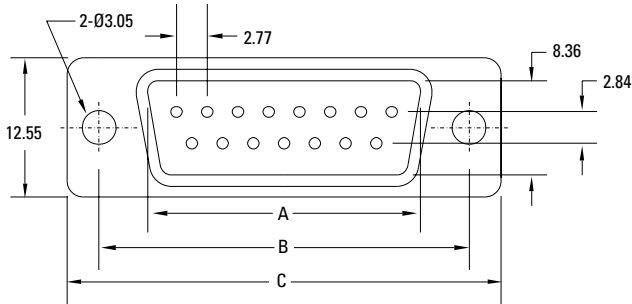
| | | | | |
|--|--|--------------------|---|---------------|
| SR | | 25 | - | BLK |
| Series | | Number of Contacts | | Color Options |
| Series | | | | |
| SR-Plastic Strain Relief for K99 Series Connector* | | | | |
| Number of Contacts | | | | |
| 9, 15, 25, 37 | | | | |
| Color Option | | | | |
| BLU: Blue Color BLK: Black Color | | | | |

*Contact factory for specifications. 888-KYCON-22

K99 Series Dimensions

Dimensions in mm

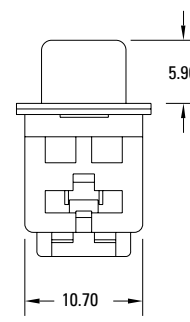
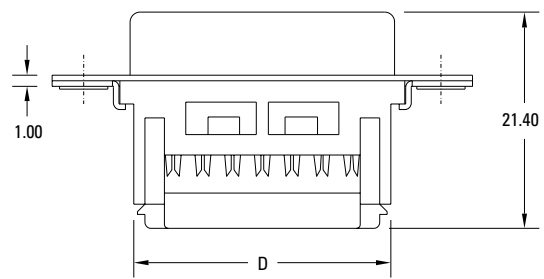
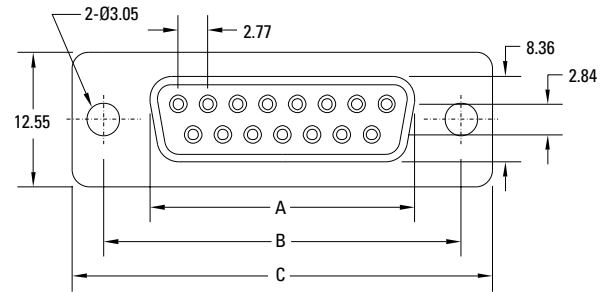
K99 Male



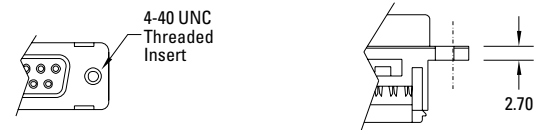
"K" Option



K99 Female



"K" Option



| Dimensions (Inch/mm) | | | | |
|----------------------|--------------|--------------|--------------|--------------|
| Shell Size | A | B | C | D |
| 9 | .666 | .984 | 1.213 | .732 |
| (E) | 16.92 | 24.99 | 30.81 | 18.60 |
| 15 | .994 | 1.312 | 1.539 | 1.047 |
| (A) | 24.25 | 33.32 | 39.10 | 26.60 |
| 25 | 1.534 | 1.852 | 2.090 | 1.610 |
| (B) | 38.96 | 47.04 | 53.09 | 40.90 |
| 37 | 2.183 | 2.500 | 2.732 | 2.248 |
| (C) | 55.45 | 63.50 | 69.40 | 57.10 |

| Dimensions (Inch/mm) | | | | |
|----------------------|--------------|--------------|--------------|-------------|
| Shell Size | A | B | C | D |
| 9 | .643 | .984 | 1.213 | .732 |
| (E) | 16.33 | 24.99 | 30.81 | 18.60 |
| 15 | .971 | 1.312 | 1.539 | 1.05 |
| (A) | 24.66 | 33.32 | 39.10 | 26.60 |
| 25 | 1.511 | 1.852 | 2.090 | 1.67 |
| (B) | 38.38 | 47.04 | 53.09 | 40.90 |
| 37 | 2.159 | 2.500 | 2.732 | 2.24 |
| (C) | 54.84 | 63.50 | 69.40 | 57.10 |

X-ON Electronics

Largest Supplier of Electrical and Electronic Components

Click to view similar products for [D-Sub Standard Connectors](#) category:

Click to view products by [Kycon](#) manufacturer:

Other Similar products are found below :

[DCM37S732N](#) [DAM15P500](#) [DEV09S364GTLF](#) [DEM09P032N](#) [DDM50P732N](#) [DAM15S332N](#) [173109-2218](#) [173109-2466](#) [173109-2436](#)
[173109-2435](#) [56F706-005-LI](#) [56F711-015](#) [015-0341-000](#) [015-0372-008](#) [015-8544-011](#) [017041-0005](#) [020419-0104](#) [012-0515-000](#) [012-9507-](#)
[034](#) [012-9507-114](#) [012-9534-001](#) [020745-0008](#) [609-25P](#) [M24308/2-23Z](#) [M243082310F](#) [M243082410F](#) [M243082411F](#) [M24308/4-21](#)
[CT1A18-11PSA206](#) [CT1N36-5SC](#) [CT2-16S-17PS](#) [CT2-20-15PCAU](#) [CT2-24-12PS](#) [CT2-24-28PSF127A206](#) [CT2-32-9PC](#) [CT6F9767-14-4-](#)
[14S-5PC](#) [CT6FA10SL-4PS](#) [CT7-18-10SC](#) [CT7-18-10SCAU](#) [CT7-18-12SCAU](#) [CT7-18-1PC](#) [CT7-18-1PCAU](#) [CT7-18-21SCAU](#) [M83513/01-](#)
[FC](#) [M83723/76W24619 L/C](#) [M85049/48-3-2F](#) [69001-865](#) [6STD09PCM99B70X](#) [6STD09SCM99B30X](#) [6STD09SCT99S40X](#)