

HDMI^(TM): KDMIX-SL1 Series
 SLIM UPRIGHT Type A Through Hole
 Shield No Flange With Spring HDMI^(TM)

Product Features

- Metal Shields Provide Better ESD Protection
- 19 Position Receptacle
- Saves Board Space

Performance Specifications

Materials and Finish

Housing Material

High Temperature Thermoplastic, UL94V-0 Rated,
 Color Black

Contacts

Brass

Plating

15µ" Gold Plated over Nickel in Contact Area,
 Tin Plated in Solder Area.

Electrical Characteristics

Rated Current

0.5A

Insulation Resistance

More than 100 Megohms at 500V DC

Dielectric Withstanding

500V for 1 Minute

Mechanical Characteristics

Durability

10000 Mating Cycles Min.

Operating Temperature

-40°C to +105°C

2D Drawing	IGES	STEP	3D PDF
Solder Profile	CofC RoHS Compliant	CofC REACH Compliant	UL Plastic File
Certificate of Origin	Check Stock	Request a Sample	Send Us An Email

Generated Part Number

Part Number Builder

Series - Shield Option - Top Spring - Insulator Option - Plating Option

Series

KDMIX-SL1 - HDMI^(TM) Slim

Shield Option

NS - Through Hole Shield Tabs

Top Spring

WS - With Top Spring

Insulator Option

B - Black

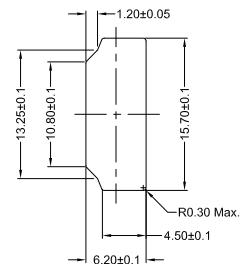
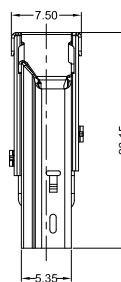
Plating Option

15 - 15µ" Gold

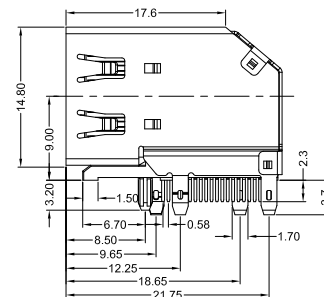
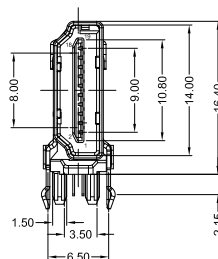
Contact Kycon for Other Options

KDMIX-SL1

Dimensions in mm



Reference Panel Cut Out Dimension



X-ON Electronics

Largest Supplier of Electrical and Electronic Components

Click to view similar products for [HDMI, Displayport & DVI Connectors](#) category:

Click to view products by [Kycon](#) manufacturer:

Other Similar products are found below :

[1775247-3](#) [2-1932649-5](#) [30-1231](#) [30-528](#) [2069485-1](#) [30-504](#) [30-519](#) [30-542](#) [47648-2000](#) [2002-400](#) [TC142X](#) [769-103/021-000](#) [1932649-1](#)
[233-368NFG6-17NH](#) [PJ-210A](#) [PJ-35825](#) [6321-026RDS1MWA02](#) [DV11201-H5R6-4F](#) [RPI-16337](#) [CC-MDPM-VGAM-6](#) [RPI-16338](#) [CCB-](#)
[HDMIL-1.5M](#) [CCB-HDMIL-1M](#) [CCB-HDMIL-2M](#) [CCB-HDMIL-3M](#) [CCB-HDMIL-5M](#) [CCB-HDMIL-7.5M](#) [CCBP-HDMI-10M](#) [CCBP-](#)
[HDMI-1M](#) [CCBP-HDMI-2M](#) [CCBP-HDMI-3M](#) [CCBP-HDMI-5M](#) [CCBP-HDMI-7.5M](#) [CCBP-HDMI8K-1M](#) [CCBP-HDMI8K-2M](#) [CCBP-](#)
[HDMI8K-3M](#) [AK-AV-02](#) [AK-AV-03](#) [AK-AV-05](#) [AK-AV-11](#) [AK-AV-13](#) [AK-AV-15](#) [CCP-MDP2-6](#) [CCP-MDPMDP2-6](#) [AK-HD-05A](#) [AK-](#)
[HD-100A](#) [AK-HD-100P](#) [AK-HD-15A](#) [AK-HD-15P](#) [AK-HD-15R](#)