



MINI/CIRCULAR DINs: KMDGX Series Right Angle Mini-DIN

Product Features

PC99 Colors Available
 Shielded Options Available for Good Conductivity,
 Grounding and EMI/RFI Protection
 Mates with Standard and Snap and Lock Plugs
 Visual and Mechanical Polarization for Plug Insertion
 Reflow Compatible Design Available
 Gold Plated Contacts
 CSA/NRTL Certified File No. LR78160
 UL File No. E140125

Performance Specifications

Materials and Finish

Body

PBT Thermoplastic, Black, Purple, or Green Color

Contacts

Copper Alloy, Gold Plated

Shield

See Drawing

Mechanical Characteristics

Insertion Force

3.0kg Max.

Extraction Force

0.3kg - 3.0kg

Durability

1000 Cycles Min.

Electrical Characteristics

Rated Current

2A

Rated Voltage

12V DC

Insulation Resistance

500 Megohm Min. at 500V DC

Contact Resistance

Plug to Terminals: 30 milliohms Max.

After Durability Test

Plug to Terminals: 60 milliohms Max.

Dielectric Withstanding Voltage

500V RMS AC for 1 Minute

Operating Temperature

-25°C to + 80°C

2D Drawing	IGES	STEP	3D PDF
Solder Profile	CofC RoHS Compliant	CofC REACH Compliant	UL Plastic File
Certificate of Origin	Check Stock	Request a Sample	Send Us An Email

Generated Part Number

Part Number Builder

<input type="text"/>	-	<input type="text"/>	<input type="text"/>	<input type="text"/>
Series		Number of Contacts	Contact Type	Option

Series

KMDGX - Right Angle PCB Mount Mini-DIN

Number of Contacts

- 3 Contacts
- 4 Contacts
- 5 Contacts
- 6 Contacts
- 7 Contacts
- 8 Contacts
- 9 Contacts
- 10 Contacts (10 Available only with BS option)

Contact Type

S - Receptacle

Shielding Option

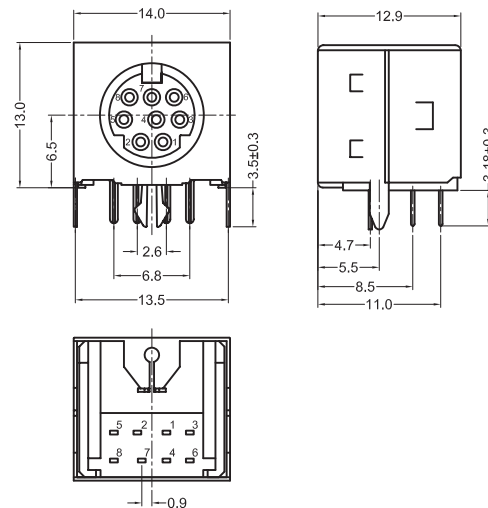
- N** - Non-Shielded
- AS** - Sides and Back Shielded
- BS** - Fully Shielded (Contact Kycon for 9 Contacts)

Contact Kycon for Other Options

KMDGX Series

Dimensions in mm

KMDGX-8S-BS



X-ON Electronics

Largest Supplier of Electrical and Electronic Components

Click to view similar products for [Circular DIN Connectors](#) category:

Click to view products by [Kycon](#) manufacturer:

Other Similar products are found below :

[60KD4M](#) [CTVP00RW-19-32S\(506\)](#) [M83723/76W22326](#) [M83723/78R22327](#) [D38999/26FE99SN L/C](#) [75-069228-21J](#) [7547401103P](#) [75-474014-07L](#) [88-559975-75P](#) [8R3006A18M0033](#) [PT02E1283P](#) [GTC00G-24-7S](#) [PT05A-14-5SX](#) [PT05A1832SW](#) [PT05E2255PW](#) [PT05SE1832SWLC](#) [PT05SE1832SYLC](#) [GTC030-20-27PW-LC](#) [GTC030A-20-33S](#) [PT06SE1811SXLC](#) [1211290078](#) [1211810025](#) [1210120122](#) [ACC06AF-20-23P\(003\)](#) [1210503216](#) [1211290084](#) [1211500027](#) [ACS06AF-16-10P\(003\)](#) [D38999/40FB35AN](#) [D38999/40FB35BB](#) [D38999/40WB35BN](#) [D38999/40WD35PN](#) [D38999/40WJ29SN-L/C](#) [D38999/40WJ4BN](#) [D38999/42FB35BN](#) [D38999/42WB35AB](#) [D38999/42WB35PB-L/C](#) [D38999/42WJ19AN](#) [D38999/42WJ24PN-L/C](#) [D38999/44WB35AN](#) [D38999/44WH21AN](#) [D38999/44WH35AN](#) [D38999/44WJ29BA](#) [D38999/44WJ35PN](#) [D38999/44WJ61BA](#) [D38999/46FB35AC](#) [D38999/46FB35BN](#) [D38999/46FB35SA-L/C](#) [D38999/46FB99BA](#) [D38999/46FB99BN](#)